



FLAT 52 HOMECOLNE HOUSE

Louden Road, Cromer, NR27 9EF

£60,000

Leasehold

Flat 52 Homecolne House

Louden Road
Cromer
NR27 9EF

£60,000

Leasehold

- **Top-floor apartment within a well-maintained over-55s development**
- **Elevated position with attractive views towards St Peter & St Paul's Church**
- **Bright living room, separate kitchen, double bedroom and bathroom**
- **Efficient layout with electric heating and low-maintenance living**
- **Conveniently located near Cromer town centre and amenities, with a subtle coastal appeal**
- **Proven track record as a successful long-term rental investment**

Agency Notes

EPC Rating: C

Council Tax: A

Mains water, electricity and drainage.

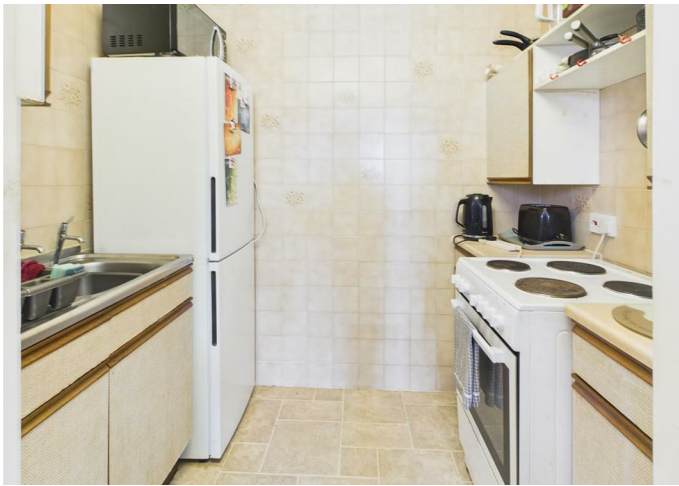
Electric heating.

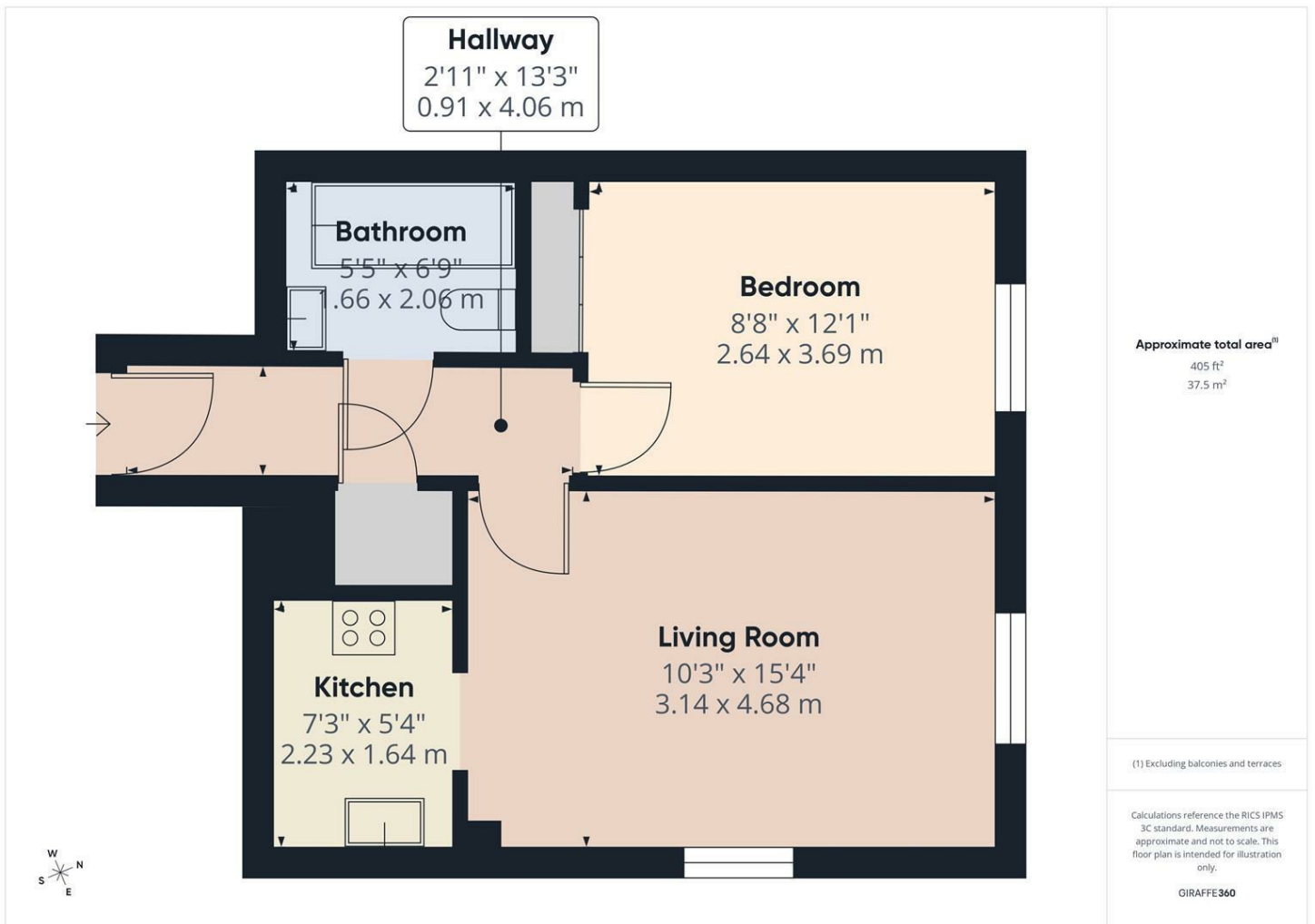
Leasehold Details: Approx. 87 years remaining; £1,285.95 service charge paid bi-annually; £620p.a. ground rent.

Set within a well-maintained over-55s development on Loudon Road, this top-floor apartment enjoys an elevated position with far-reaching views, including a striking outlook towards St Peter & St Paul's Church, a much-loved landmark on the Cromer skyline. The accommodation flows effortlessly from a welcoming hallway into a bright and well-proportioned living space, complemented by a separate kitchen, a generous double bedroom, and a neatly appointed bathroom. Electric heating and an efficient layout ensure practicality alongside comfort, while the building itself provides a reassuring sense of community and carefully managed surroundings.

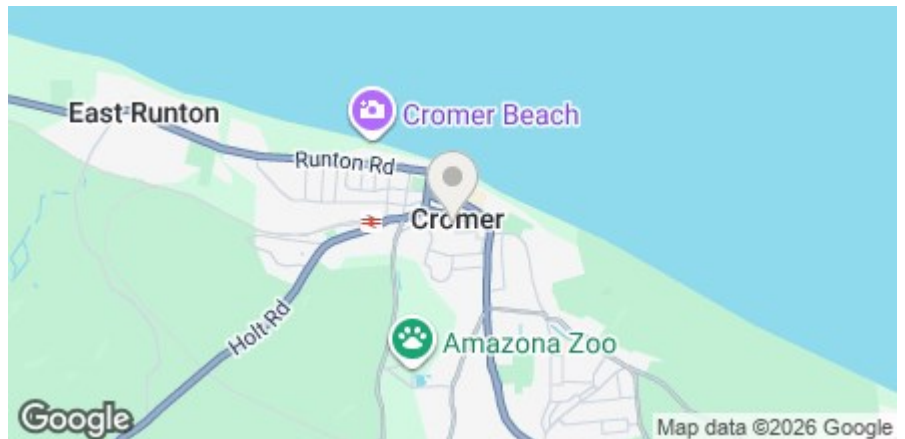
Positioned within easy reach of Cromer's town centre amenities and coastline, the property offers a lifestyle defined by convenience with just a subtle nod to the seaside nearby. Equally, it presents a compelling opportunity for investors, with a proven track record as a reliable long-term tenancy, offering both immediate appeal and enduring potential in a sought-after coastal location.







Energy Efficiency Rating		
	Current	Potential
Very energy efficient - lower running costs		
(92 plus) A		
(81-91) B		
(69-80) C		
(55-68) D		
(39-54) E		
(21-38) F		
(1-20) G		
Not energy efficient - higher running costs		
England & Wales	EU Directive 2002/91/EC	
	70	77



15 West Street, Cromer, Norfolk, NR27 9HZ
01263 511111 • hello@henleyshomes.co.uk • henleyshomes.co.uk

These particulars and measurements whilst believed to be accurate, are set out as a general outline only for guidance and do not constitute any part of an offer or contract. Intending purchasers should not rely on them as statements of representation of fact, but must satisfy themselves by inspection or otherwise as to their accuracy. No person in this firm's employment has the authority to make or give representation or warranty in respect of the property.

