



**Huish, Yeovil, BA20 1BJ**



**welcome to**

## **Huish, Yeovil**

A lovely two bedroom cottage, situated within close proximity to Yeovil Town Centre, hospital and local amenities. The accommodation is presented in immaculate decorative order throughout and boasting a wealth of space and natural light. Externally benefitting a good size enclosed garden.



## Entrance

Double glazed door to the front, opening into:

## Lounge

11' 6" x 10' 10" ( 3.51m x 3.30m )

A lovely light room with double glazed window to the front with bespoke fitted shutters. Bespoke fitted cupboards inset to the alcoves. Radiator. Opening into:

## Dining Area

11' 6" x 8' 11" ( 3.51m x 2.72m )

Stairs rising to the first floor. Space for dining table and chairs. Double doors opening into the lean to. Radiator. Door opening into:

## Fitted Kitchen

8' 7" x 5' 11" ( 2.62m x 1.80m )

Double glazed window to the side. A range of fitted wall, base and drawer units with work surface over and complementary tiled surround, Single bowl stainless steel sink and drainer with mixer tap. Integrated electric hob with cooker hood over and electric oven below. Plumbing for washing machine. Space for fridge/freezer. Wall mounted Worcester boiler. Door opening into:

## Bathroom

Double glazed window to the rear. Suite comprising enclosed bath with mixer tap and shower over. Wash hand basin and WC inset to vanity unit. Inset spotlights to the ceiling. Towel radiator.

## Lean To

A perfect additional room with double glazed door to the rear, opening to the garden.

## First Floor Landing

Access to the loft space with built in ladder.

## Bedroom One

12' 2" x 10' 11" ( 3.71m x 3.33m )

Double glazed window to the front with bespoke fitted shutters. Space for free standing furniture. Radiator.

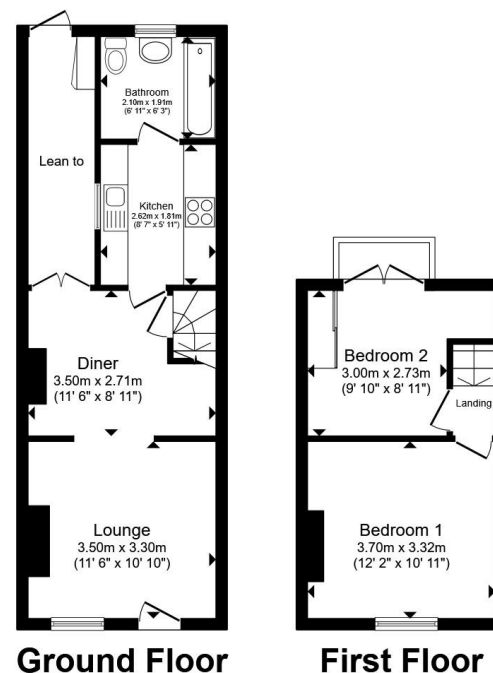
## Bedroom Two

9' 10" x 8' 11" ( 3.00m x 2.72m )

Double glazed French doors to the rear, overlooking the garden. Bespoke shelving inset to the alcove. Space for free standing furniture. Radiator.

## Rear Garden

A good size enclosed rear garden, laid mainly to lawn with a paved patio area abutting the property, providing an ideal seating/entertaining area to enjoy the summer sunshine and alfresco dining. Garden shed and outside tap.



Total floor area 59.3 m<sup>2</sup> (639 sq.ft.) approx

This floor plan is for illustrative purposes only. It is not drawn to scale. Any measurements, floor areas (including any total floor area), openings and orientation are approximate. No details are guaranteed, they cannot be relied upon for any purpose and they do not form part of any agreement. No liability is taken for any error, omission or misstatement. A party must rely upon its own inspection(s). Powered by [www.propertybox.io](http://www.propertybox.io)

  
fox & sons



**view this property online** [fox-and-sons.co.uk/Property/YEO108858](http://fox-and-sons.co.uk/Property/YEO108858)



## welcome to Huish, Yeovil

- Terrace Cottage
- Two Double Bedrooms
- Spacious Accommodation
- Excellent Decorative Order Throughout
- Good Size Enclosed Garden

Tenure: Freehold EPC Rating: D  
Council Tax Band: A

# £175,000



Please note the marker reflects the  
postcode not the actual property

**view this property online** [fox-and-sons.co.uk/Property/YEO108858](https://fox-and-sons.co.uk/Property/YEO108858)



Property Ref:  
YEO108858 - 0003

1. MONEY LAUNDERING REGULATIONS Intending purchasers will be asked to produce identification documentation at a later stage and we would ask for your co-operation in order that there is no delay in agreeing the sale. 2. These particulars do not constitute part or all of an offer or contract. 3. The measurements indicated are supplied for guidance only and as such must be considered incorrect. Potential buyers are advised to recheck measurements before committing to any expense. 4. We have not tested any apparatus, equipment, fixtures or services and it is in the buyers interest to check the working condition of any appliances. 5. Where an EPC, or a Home Report (Scotland only) is held for this property, it is available for inspection at the branch by appointment. If you require a printed version of a Home Report, you will need to pay a reasonable production charge reflecting printing and other costs. 6. We are not able to offer an opinion either written or verbal on the content of these reports and this must be obtained from your legal representative. 7. Whilst we take care in preparing these reports, a buyer should ensure that his/her legal representative confirms as soon as possible all matters relating to title including the extent and boundaries of the property and other important matters before exchange of contracts.

Fox & Sons is a trading name of Sequence (UK) Limited which is registered in England and Wales under company number 4268443, Registered Office is Cumbria House, 16-20 Hockliffe Street, Leighton Buzzard, Bedfordshire, LU7 1GN. VAT Registration Number is 500 2481 05.

  
fox & sons



**01935 412100**



[Yeovil@fox-and-sons.co.uk](mailto:Yeovil@fox-and-sons.co.uk)



14 Princes Street, YEOVIL, Somerset, BA20 1EW



**[fox-and-sons.co.uk](https://fox-and-sons.co.uk)**