



8 Brewer Close, Steventon OX13 6SX



8 Brewer Close

Spacious four- bedroom detached family home with double garage, situated in a highly sought after location just off the village green, siding directly onto an attractive open aspect, complemented by southerly facing rear gardens and is sold with no ongoing chain.

Brewer Close is a highly sought after and very small development consisting of only five detached properties forming a very pleasant overall setting, just a short walk from the thriving village green and historic Medieval Causeway. There is also easy pedestrian access to a wide range of amenities including excellent primary school, church, general store (including post office) and several public houses. This is combined with a quick vehicular route to the nearby thriving towns of Abingdon (circa 4.4 miles) Didcot with its useful mainline railway station to London (circa 4.2 miles) and the A34 leading to many important destinations North and South.

Bedrooms: 4

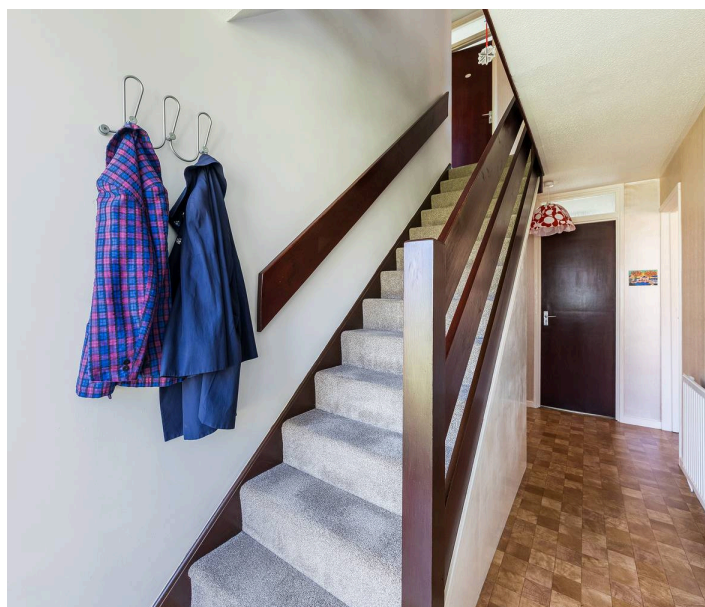
Bathrooms: 2

Reception Rooms: 2

Council Tax Band: E

Tenure: Freehold

EPC: C





Key Features

- Entrance hall with cloakroom off leading to an impressive double aspect living room with double doors leading to the southerly facing rear gardens
- Separate dining room and well equipped kitchen (easily combined to provide a large open plan lifestyle room if required)
- Master bedroom with built-in wardrobe cupboards and en-suite shower room
- Three first floor bedrooms complemented by a family bathroom
- Mains gas radiator central heating, double glazed windows and the property is sold with no ongoing chain
- Generous front gardens incorporating lawn and long driveway providing hard standing parking facilities for many vehicles leading to an attached double garage with two up and over doors
- Mature southerly facing rear gardens incorporating patio and lawn surrounded by mature shrubs and trees affording high degrees of privacy before siding onto an attractive open aspect











BRITISH
PROPERTY
AWARDS
2024

GOLD WINNER

ESTATE AGENT
IN ABINGDON



Introducing the Hodsons team...
...trust in our experience!



Brewer Close, OX13

Approximate Gross Internal Area = 101.30 sq m / 1090 sq ft

Garage = 27.20 sq m / 293 sq ft

Total = 128.50 sq m / 1383 sq ft

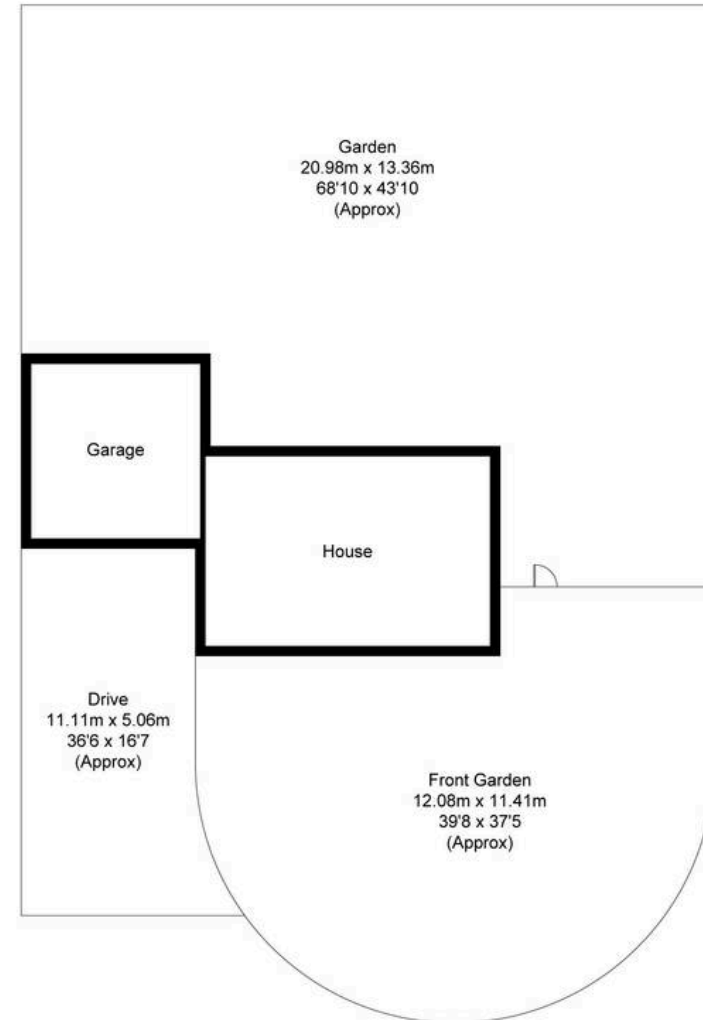
For identification only - Not to scale



First Floor



Ground Floor



Not to scale, for illustration and layout purposes only.
© Mortimer Photography. Produced for Hodsons.
Unauthorised reproduction prohibited



5 Ock Street, Abingdon,
Oxfordshire, OX14 5AL
T: 01235 553686
E: abingdon@hodsons.co.uk
www.hodsons.co.uk