



Clements estate agents



Meadow Road, Berkhamsted, HP4 1EA

£800,000

Located in an elevated position with panoramic views and in the highly sought after Meadow Road in Berkhamsted is this well presented semi detached family home. Boasting three bedroom, modern fitted kitchen with integrated appliances, living room, dining room, gas central heating, double glazing, landscaped rear garden, garage and off road parking.

Situated within easy reach of Berkhamsted mainline station with access to London Euston and Berkhamsted High Street with all of its shops, restaurants, public houses and travel facilities.

Nestled on Meadow Road in the charming town of Berkhamsted, this well-presented three-bedroom semi-detached family home offers a delightful blend of comfort and style. Spanning an impressive 980 square feet, the property is situated in an elevated position, providing stunning panoramic views over Berkhamsted and the surrounding countryside.

Upon entering, you will find a modern fitted kitchen with integrated appliances that is both functional and aesthetically pleasing, perfect for culinary enthusiasts. The property boasts two spacious reception rooms, providing ample space for relaxation and entertaining guests. The layout is thoughtfully designed to create a warm and inviting atmosphere throughout.

The three bedrooms are well-proportioned, making them ideal for families or those seeking extra space for guests or a home office. The bathroom and separate WC are conveniently located, ensuring ease of access for all residents.

Additional features of this lovely home include gas central heating and double glazing, ensuring warmth and comfort during the colder months. A garage and off road parking is also included, providing secure parking and extra storage space.

This semi-detached house is not just a home; it is a lifestyle choice, offering a peaceful retreat while being close to the amenities and attractions of Berkhamsted. With its stunning views and modern features, this property is a must-see for anyone looking to settle in this desirable area.

Entrance Hall

Living Room 14'11 x 11'11 (4.55m x 3.63m)



Dining Room 12'8 x 11'1 (3.86m x 3.35m/0.30m)



Modern Fitted Kitchen 9'5 x 6'1 (2.87m x 1.85m)



Landing

Bedroom One 14'11 x 11'11 (4.55m x 3.63m)



Bathroom



Bedroom Two 12'8 x 10'3 (3.86m x 3.12m)



Separate WC



Bedroom Three 9'4 x 7'8 (2.84m x 2.34m)



Off Road Parking

Garage

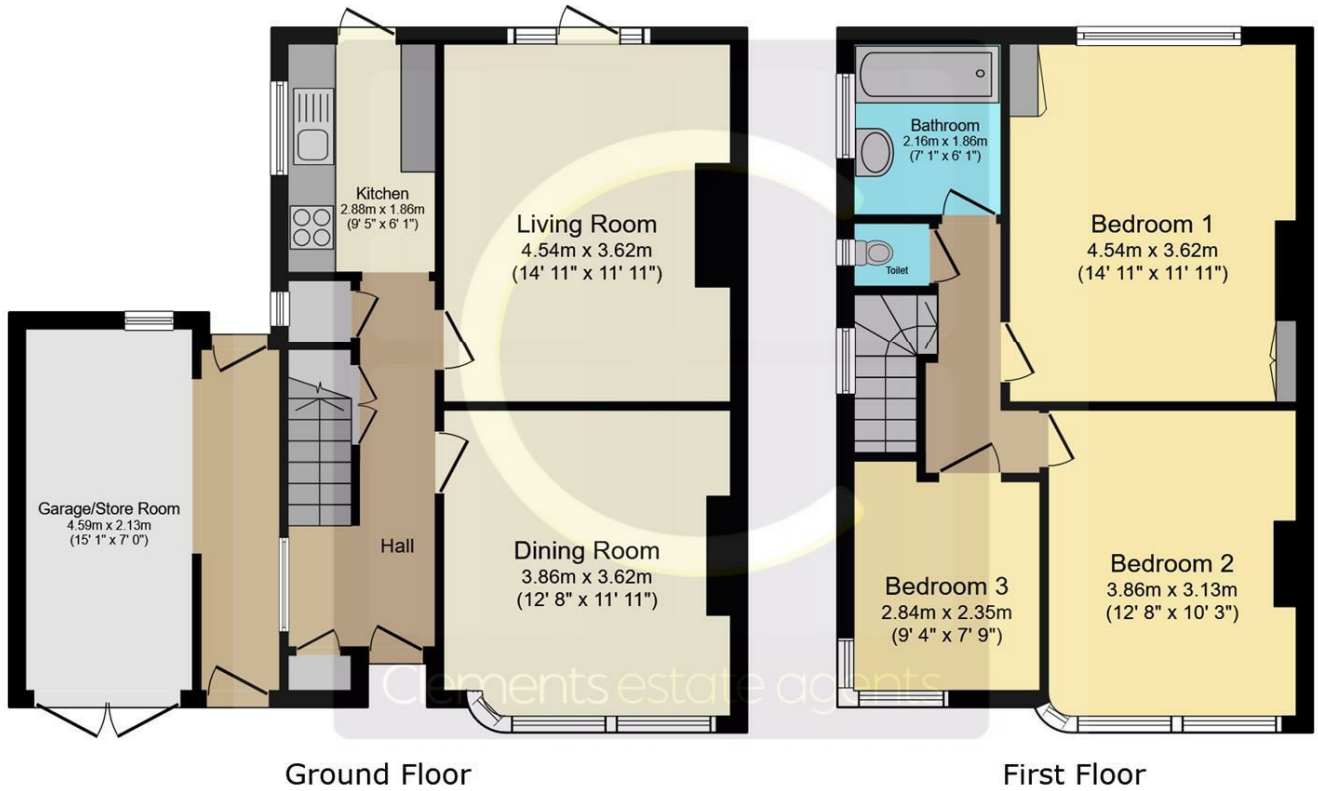
Landscaped Rear Garden



Views Over Berkhamsted

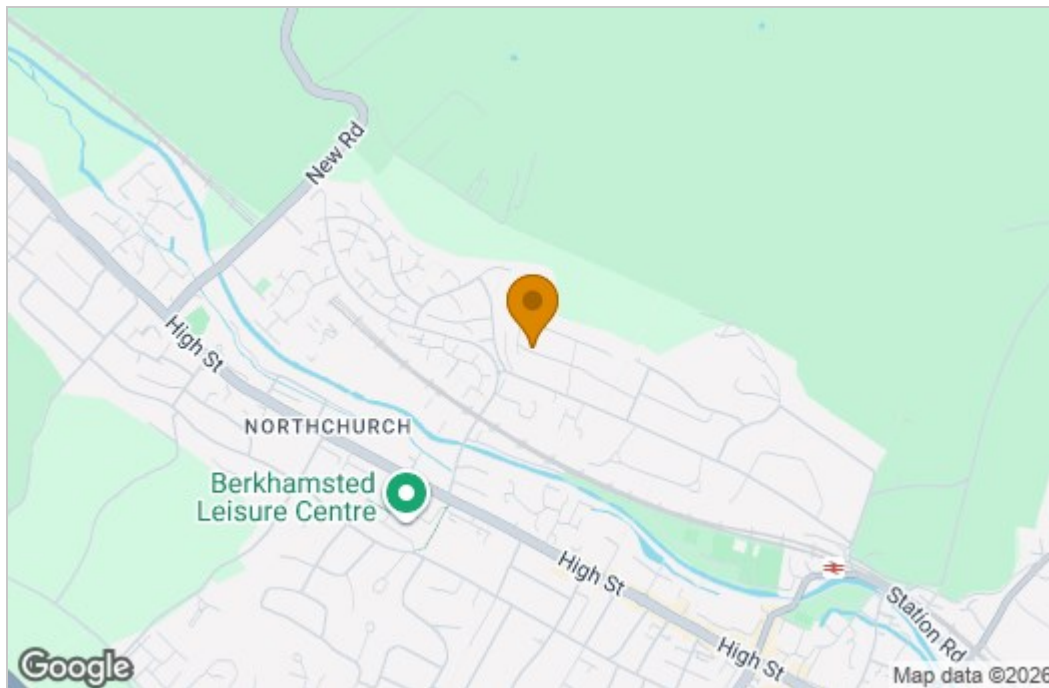


Floor Plan

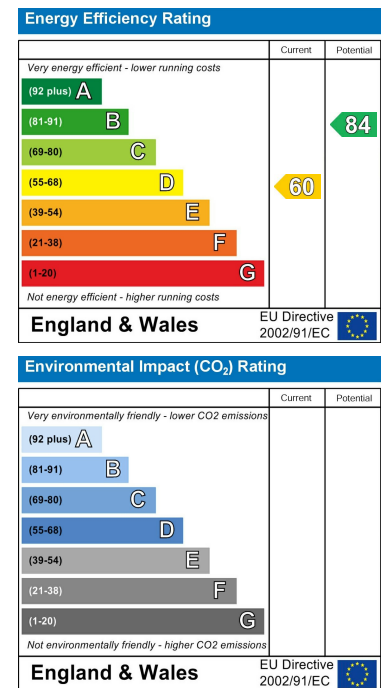


This floor plan is for illustrative purposes only. It is not drawn to scale. Any measurements, floor areas (including any total floor area), openings and orientations are approximate. No details are guaranteed, they cannot be relied upon for any purpose and do not form any part of any agreement. No liability is taken for any error, omission or misstatement. A party must rely upon its own inspection(s). Powered by www.Propertybox.io

Area Map



Energy Efficiency Graph



These particulars, whilst believed to be accurate are set out as a general outline only for guidance and do not constitute any part of an offer or contract. Intending purchasers should not rely on them as statements of representation of fact, but must satisfy themselves by inspection or otherwise as to their accuracy. No person in this firm's employment has the authority to make or give any representation or warranty in respect of the property.