

Cumberland Place, SE6

£1,400 Per calendar month

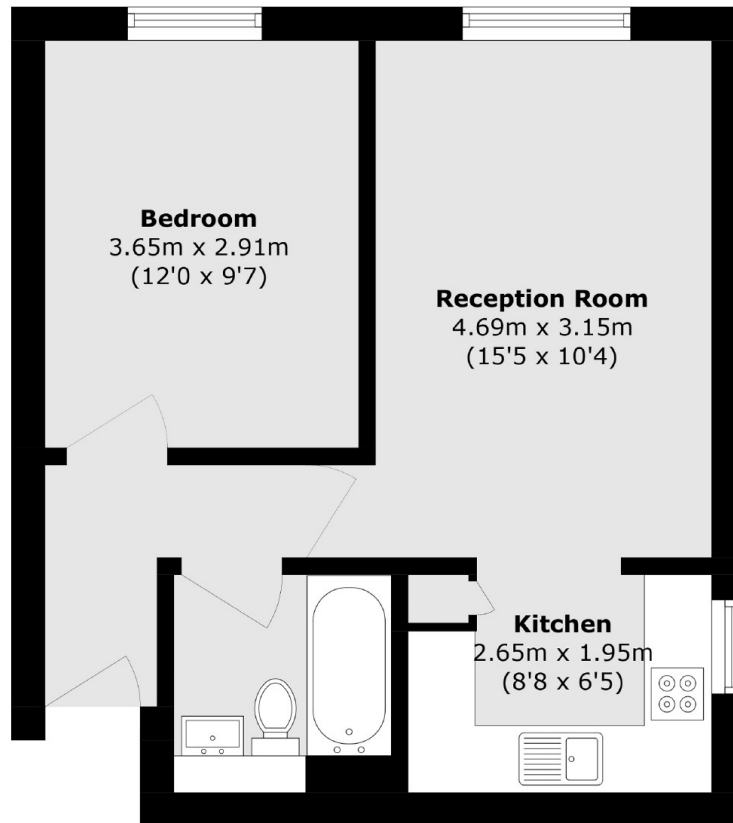
A well presented one bedroom purpose built flat, semi open plan kitchen and lounge, recently refurbished throughout to a modern standard.

Inverness Court is located 1 mile from Hither Green station which has regular services into London and the City.

Features

- One Double Bedroom
- Modern Apartment
- Reception Room
- Fitted Kitchen
- Modern Bathroom
- Off Street Parking

Cumberland Place, London, SE6



Total area (approx.): 39.0 sq. m (419.7sq. ft)