



WETHERELL

MAYFAIR'S FINEST PROPERTIES



SHEPHERD STREET, W1J

£4,250,000

An exceptional four-bedroom, Freehold townhouse with garage and roof terrace.

Set over 5 floors and measuring 2,180 sq. Ft, this meticulously designed property provides exceptional, light filled accommodation.

The ground floor has an open plan, bespoke Smallbone kitchen with integrated Miele appliances, separate seating area, a large electric skylight and a dumb waiter servicing the dining room above. There is also access to an integral garage providing off street parking.

The first floor showcases a refined reception/dining room with stone fireplace, wood flooring and large sash windows to the front whilst French windows at the rear open on to a private terrace.

SHEPHERD STREET IS LOCATED IN THE VIBRANT SHEPHERD MARKET AREA OF MAYFAIR AND IS LOCATED WITHIN CLOSE PROXIMITY TO THE OPEN SPACES OF GREEN PARK AND HYDE PARK.



FEATURES

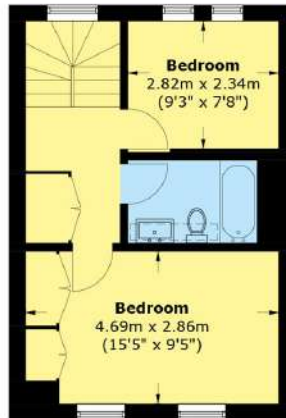
- Freehold • Reception room with terrace • Four bedrooms • Three bathrooms • Roof terrace • Garage •



SHEPHERD STREET, LONDON, W1J



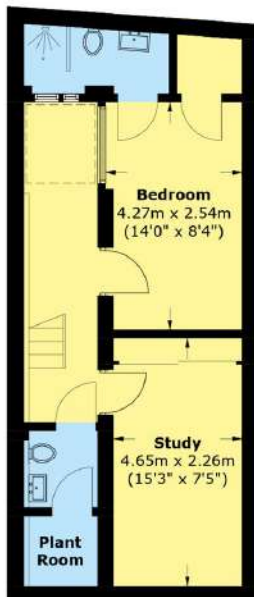
Second Floor



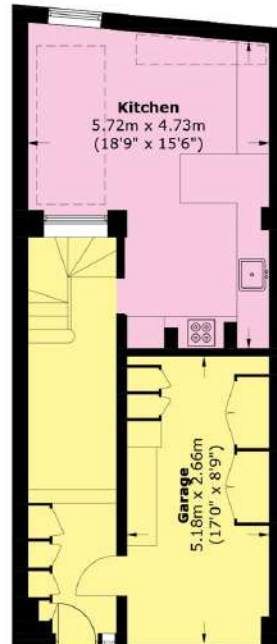
Third Floor



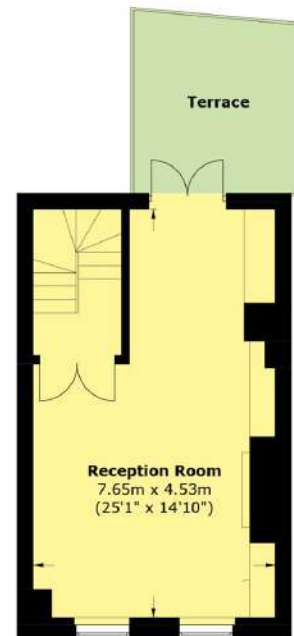
Top Floor



Lower Ground Floor



Ground Floor



First Floor

Total area (approx.): 202.6 sq. m (2,180.7 sq. ft)
Total Terrace area (approx.): 35.9 sq. m (386.4 sq. ft)



WETHERELL
MAYFAIR'S FINEST PROPERTIES

102 Mount Street,
London, W1K 2TH
T: 020 7529 5566
E: sales@wetherell.co.uk

We aim to make our particulars both accurate and reliable. However they are not guaranteed; nor do they form part of an offer or contract. If you require clarification on any points then please contact us, especially if you're traveling some distance to view. Please note that appliances and heating systems have not been tested and therefore no warranties can be given as to their working order.

wetherell.co.uk