



Connells

Aspen Drive
Bristol



Property Description

Situated in the ever-popular BS10 area, this immaculately presented two-bedroom maisonette on Aspen Drive offers stylish and spacious living, ideal for first-time buyers, downsizers, or investors alike.

The property is beautifully maintained throughout and provides a light and airy feel from the moment you step inside. The accommodation comprises a generous living area, a modern fitted kitchen with ample storage, two well-proportioned bedrooms, and a contemporary bathroom suite, all finished to a high standard.

Externally, the property further benefits from off-road parking, adding convenience and practicality for everyday living.

Aspen Drive is ideally located for access to a range of local amenities, including shops, schools, and leisure facilities. Excellent transport links provide easy access to Bristol city centre, Cribbs Causeway, and the motorway network, making it a superb choice for commuters.

A fantastic opportunity to acquire a turnkey home in a sought-after location-early viewing is highly recommended.

15' MAX x 8' MAX (4.57m MAX x 2.44m MAX)

Bathroom

Balcony

24' 8" x 4' 4" (7.52m x 1.32m)

Garage

19' 10" x 10' 2" (6.05m x 3.10m)

Ground Floor

Entrance Hall

First Floor

Landing

Living Room/Kitchen

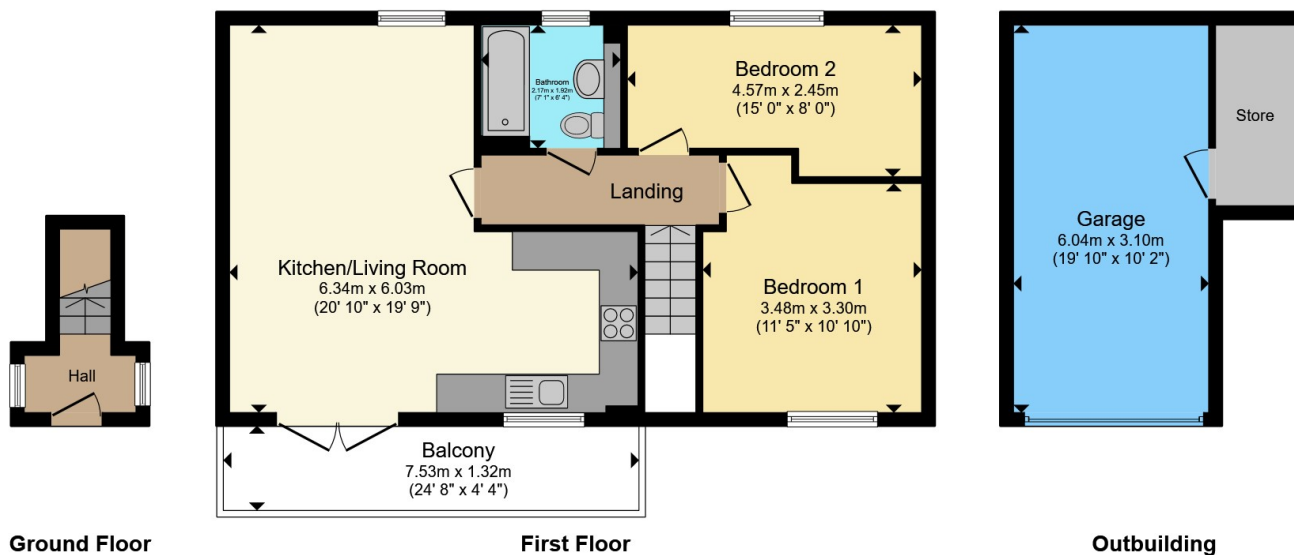
20' 10" MAX x 19' 9" MAX (6.35m MAX x 6.02m MAX)

Bedroom 1

11' 5" MAX x 10' 10" MAX (3.48m MAX x 3.30m MAX)

Bedroom 2





Total floor area 90.0 m² (969 sq.ft.) approx

This floor plan is for illustrative purposes only. It is not drawn to scale. Any measurements, floor areas (including any total floor area), openings and orientation are approximate. No details are guaranteed, they cannot be relied upon for any purpose and they do not form part of any agreement. No liability is taken for any error, omission or misstatement. A party must rely upon its own inspection(s). Powered by www.propertybox.io



To view this property please contact Connells on

T 0117 950 1552

E westburyontrym@connells.co.uk

6 Canford Lane
BRISTOL BS9 3DH

EPC Rating: B Council Tax
Band: B

Tenure: Freehold

view this property online connells.co.uk/Property/WOT309505



1. MONEY LAUNDERING REGULATIONS Intending purchasers will be asked to produce identification documentation at a later stage and we would ask for your co-operation in order that there will be no delay in agreeing the sale. 2. These particulars do not constitute part or all of an offer or contract. 3. The measurements indicated are supplied for guidance only and as such must be considered incorrect. Potential buyers are advised to recheck measurements before committing to any expense. 4. We have not tested any apparatus, equipment, fixtures, fittings or services and it is in the buyers interest to check the working condition of any appliances.

Connells Residential is registered in England and Wales under company number 1489613, Registered Office is Cumbria House, 16-20 Hockliffe Street, Leighton Buzzard, Bedfordshire, LU7 1GN. VAT Registration Number is 500 2481 05.

See all our properties at www.connells.co.uk | www.rightmove.co.uk | www.zoopla.co.uk

Property Ref: WOT309505 - 0003