



Jordan fishwick

43 Larchwood Drive, Wilmslow, SK9 2NU
Guide Price £334,950



Larchwood Drive Cheshire SK9 2NU

Guide Price £334,950




NO ONWARD CHAIN. Situated in the highly sought-after Summerfields development, within easy reach of Wilmslow town centre and its excellent amenities, this well-presented three-bedroom home offers the benefit of reverse-level living, creating a bright and spacious first-floor living environment. The accommodation briefly comprises an entrance hallway, three well-proportioned bedrooms, and a family bathroom on the ground floor. To the first floor, an impressive open-plan lounge and dining area with feature box bay window and access to a stylish kitchen with wall and base fitted units and a handful of integrated appliances. Further benefits include UPVC double glazing throughout, gas central heating, and a private driveway providing off-road parking for two vehicles. Externally, the property enjoys a well-maintained rear garden, predominantly laid to lawn, complemented by a paved patio area.

Viewing is highly recommended to fully appreciate the accommodation and location on offer.



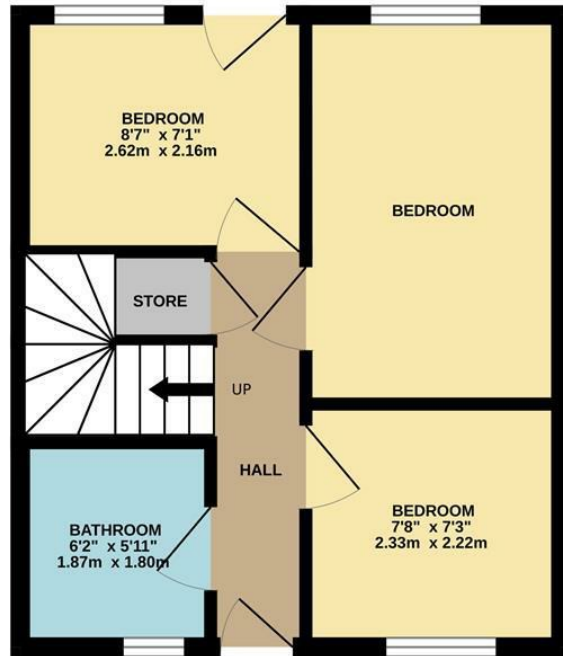
- No Chain
- Three Bedrooms
- Open Plan Living Dining
- Off Road Parking
- Sizeable Rear Garden
- UPVC Double Glazed
- Gas Central Heating
- End Of Terrace



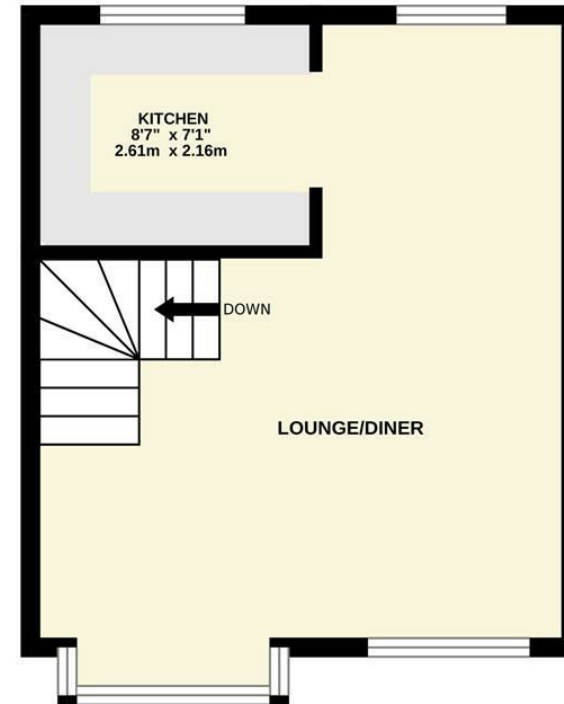
Energy Efficiency Rating		
	Current	Potential
Very energy efficient - lower running costs		
(92 plus) A		
(81-91) B		87
(69-80) C	70	
(55-68) D		
(39-54) E		
(21-38) F		
(1-20) G		
Not energy efficient - higher running costs		
England & Wales	EU Directive 2002/91/EC 	



GROUND FLOOR



1ST FLOOR



Measurements are approximate. Not to scale. Illustrative purposes only
Made with Metropix ©2026



These particulars are believed to be accurate but they are not guaranteed and do not form a contract. Neither Jordan Fishwick nor the vendor or lessor accept any responsibility in respect of these particulars, which are not intended to be statements or representations of fact and any intending purchaser or lessee must satisfy himself by inspection or otherwise as to the correctness of each of the statements contained in these particulars. Any floorplans on this brochure are for illustrative purposes only and are not necessarily to scale.

Offices at: Chorlton, Didsbury, Disley, Hale, Glossop, Macclesfield, Manchester Deansgate, Manchester Whitworth Street, New Mills, Sale, Wilmslow and Withington

36-38 Alderley Road, Wilmslow SK91JX
01625 532000

wilmslow@jordanfishwick.co.uk
www.jordanfishwick.co.uk