



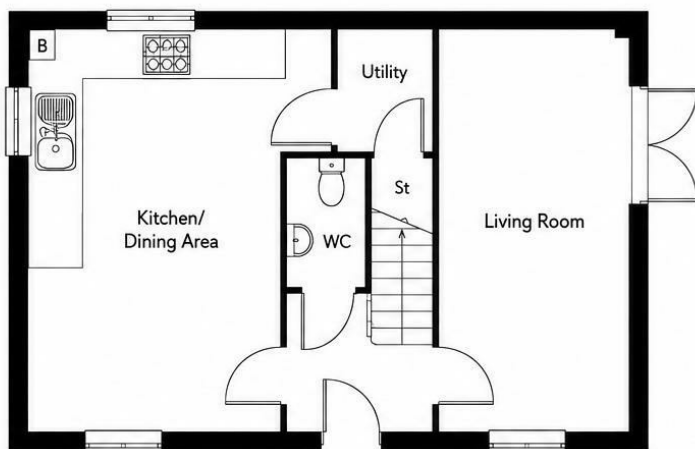
3 Bed
House - End Terrace
located in

£1,250 Per month



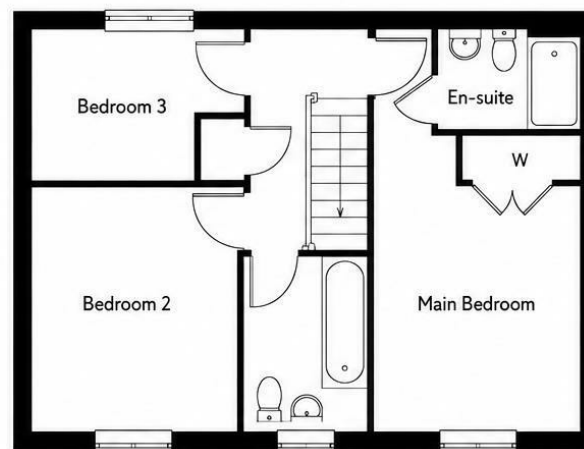
SMART STREET
THE PROPERTY PEOPLE

Approximate Gross Internal Area
89.2 sq m / 960 sq ft



Ground Floor

Kitchen/Dining Area	4.80m x 3.02m		15'9" x 9'11"
Living Room	4.80m x 3.05m		15'9" x 10'0"



First Floor

Main Bedroom	3.32m x 3.05m		10'11" x 10'0"
Bedroom 2	3.08m x 2.70m		10'1" x 8'10"
Bedroom 3	3.08m x 2.05m		10'1" x 6'9"

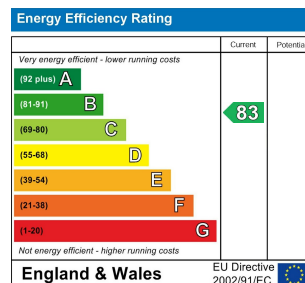
B - Boiler St - Store W - Wardrobe WC - Cloakroom

This floorplan is for illustrative purposes only. It is not drawn to scale. Any measurements, floor areas (including any total floor area), openings and orientation are approximate. No details are guaranteed, they cannot be relied upon for any purpose and they do not form part of any agreement. No liability is taken for any error, omission or misstatement. A party must rely upon its own inspection.

CONTACT

14 Withambrook Park
Grantham
NG31 9ST

E: info@smartstreetproperty.com
T: 01476 247107



SMART STREET
THE PROPERTY PEOPLE