



Clarendon Road, W11

£495,000

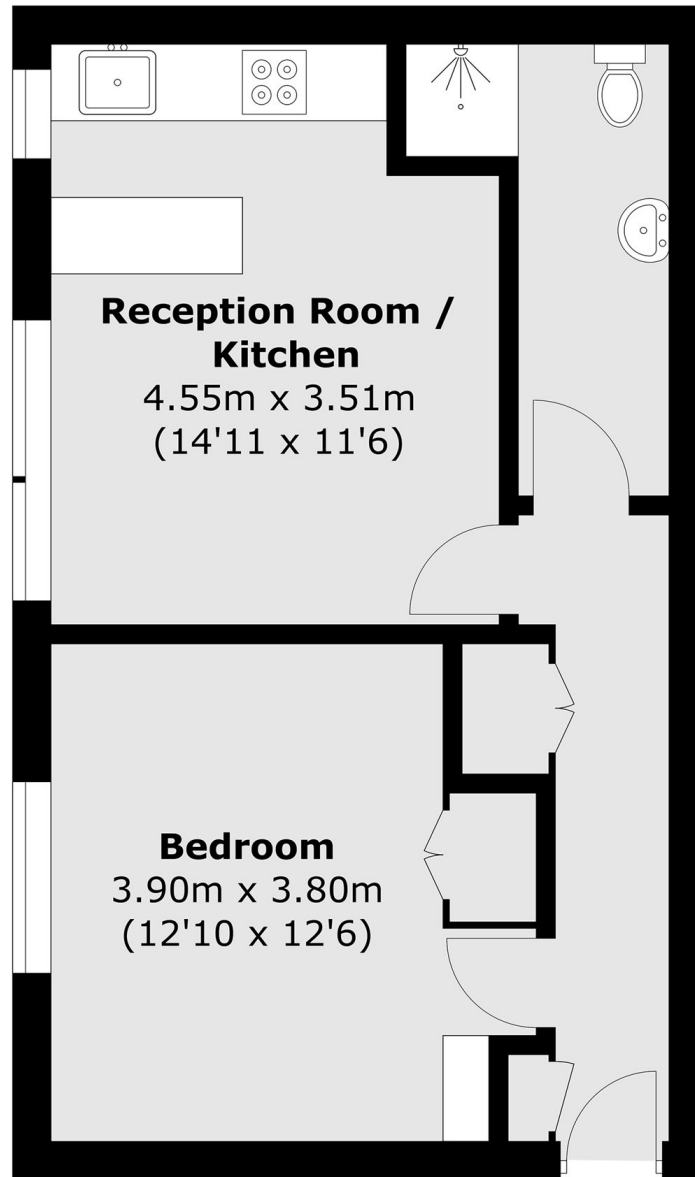
A well-presented and spacious second floor apartment, with an open plan kitchen and reception room, large double bedroom and bathroom. This will make an ideal first time purchase or investment for anyone that loves Notting Hill and Holland Park.

Clarendon Road is a popular residential road, close to the shops, boutiques and restaurants on Portobello Road and Westbourne Grove. There's a choice of Latimer Road or Holland Park Underground stations and the manicured green spaces of Holland Park are close by.

Features

- One Double Bedroom
- Open Plan
- Spacious
- Large Windows
- Good Condition
- Close To Amenities

Clarendon Road, London, W11



Total area (approx.): 41.7 sq. m (448.8 sq. ft)