



Greyhound Lane, SW16

£600,000

Dexters



Greyhound Lane, SW16

At nearly a thousand square feet, this two double bedroom, share of freehold flat benefits from private off-street parking, open plan kitchen-living, a spacious garden and being in great condition throughout.

Additionally, the garden houses a spacious outbuilding perfect for those needing space to work from home, gym or extra storage. The property sits within walking distance of both Streatham and Streatham Common Station as well as plenty of local amenities.

Greyhound Lane is perfectly placed for Streatham Common and Streatham's busy town centre as well as the common itself which houses The Rookery Gardens . Additionally, it is situated equidistant between Streatham Mainline and Streatham Common stations which provide frequent rail links to the city.

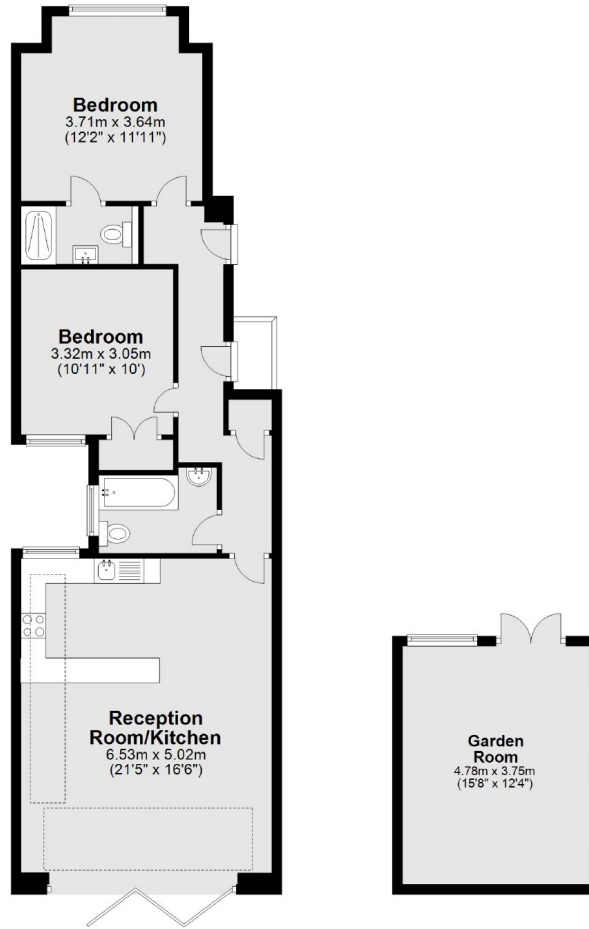
Features

- Share of Freehold
- Parking
- Open Plan
- Private Garden
- Convenient Location
- Two Bathrooms



Greyhound Lane, London, SW16

Ground Floor



Total area: approx. 91.8 sq. metres (987.8 sq. feet)