



CLIVEPEARCE
Now you're moving

3 Bedrooms

House - Semi-Detached

Asking Price

£275,000

Located in

Truro



www.clivepearceproperty.com



Green Close

Truro | Cornwall | TR1 2DD



A spacious and well presented three bedroom family home with generous gardens in an established location with lovely views across the city.

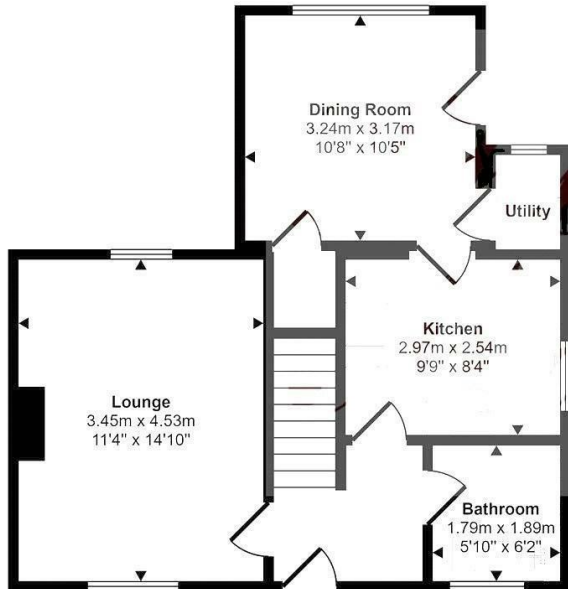
Green Close

£275,000 Freehold

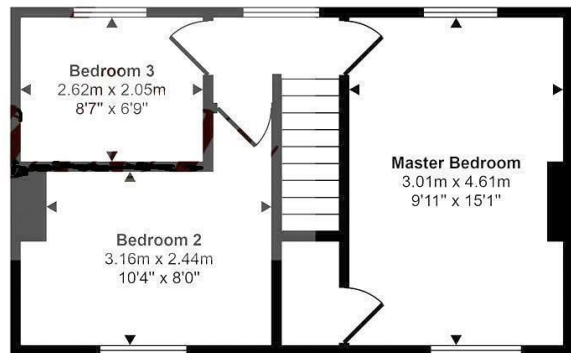


- Three bedrooms
- Separate dining room
- Bathroom with white suite
- Good sized front and rear gardens
- Living room
- Modern fitted kitchen
- Well presented throughout

Approx Gross Internal Area
83 sq m / 892 sq ft



Ground Floor
Approx 47 sq m / 510 sq ft



First Floor
Approx 35 sq m / 381 sq ft

This floorplan is only for illustrative purposes and is not to scale. Measurements of rooms, doors, windows, and any items are approximate and no responsibility is taken for any error, omission or mis-statement. Icons of items such as bathroom suites are representations only and may not look like the real items.

Council Tax Band B

Local Authority

Agents Note: Whilst every care has been taken to prepare these particulars, they are for guidance purposes only. All measurements are approximate and are for general guidance purposes only and whilst every care has been taken to ensure their accuracy, they should not be relied upon and potential buyers/tenants are advised to recheck the measurements.

Energy Efficiency Rating		
	Current	Potential
Very energy efficient - lower running costs		
(92 plus) A		
(81-91) B		
(69-80) C		
(55-68) D		
(39-54) E		
(21-38) F		
(1-20) G		
Not energy efficient - higher running costs		
England & Wales		EU Directive 2002/91/EC

31 Lemon Street
Truro
Cornwall
TR1 2LS



CLIVEPEARCE
Now you're moving

hello@clivepearceproperty.com

01872 272622

www.clivepearceproperty.com