



Price
£259,950

Freehold

3x  1x  1x 

**Lime Grove,
Sittingbourne, Kent,
ME10**

Wards
Helping you move forwards



Main features

- Close to local amenities
- Quiet cul-de-sac position
- Off road parking to the front
- Newly renovated with new kitchen and bathroom
- Perfect for families or first time buyers, this home combines convenience and comfort

Accommodation

GROUND FLOOR

Porch

Lounge: 15'9 x 11'4 (4.80m x 3.46m)

Kitchen/Dining Area: 15'8 x 11'6 (4.78m x 3.51m)

Sun Room Area: 8'8 x 6'4 (2.64m x 1.93m)

FIRST FLOOR

Landing

Bedroom 1

Bedroom 2

Bedroom 3

Bathroom

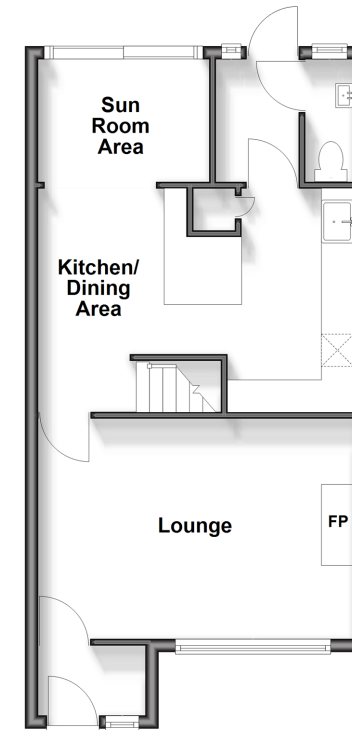
OUTSIDE

Off-Road Parking

Rear Garden

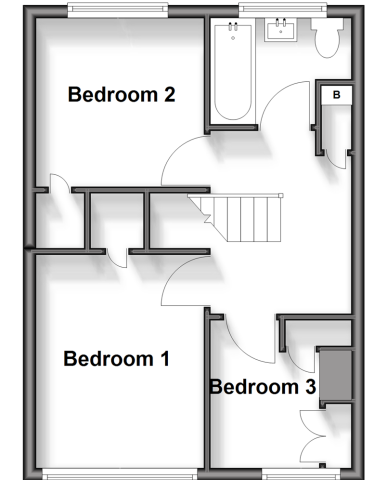
Ground Floor

Approx. 45.8 sq. metres (493.5 sq. feet)



First Floor

Approx. 34.1 sq. metres (367.1 sq. feet)



Call Sittingbourne - 01795 427272 ■ wardsofKent.co.uk

■ Legal advice should be taken to verify fixtures/fittings, planning, alterations and/or lease details

■ Appliances & services are untested, dimensions are approximate and floor plans are not to scale



11738919/20251022/CK/MC1