

Elm Grove, SW19

£650,000

* Share Of The Freehold * A collection of nineteen new build apartments including studio, one and two bedroom apartments all with their own private outside spaces, a share of the freehold and a communal bike and parcel store.

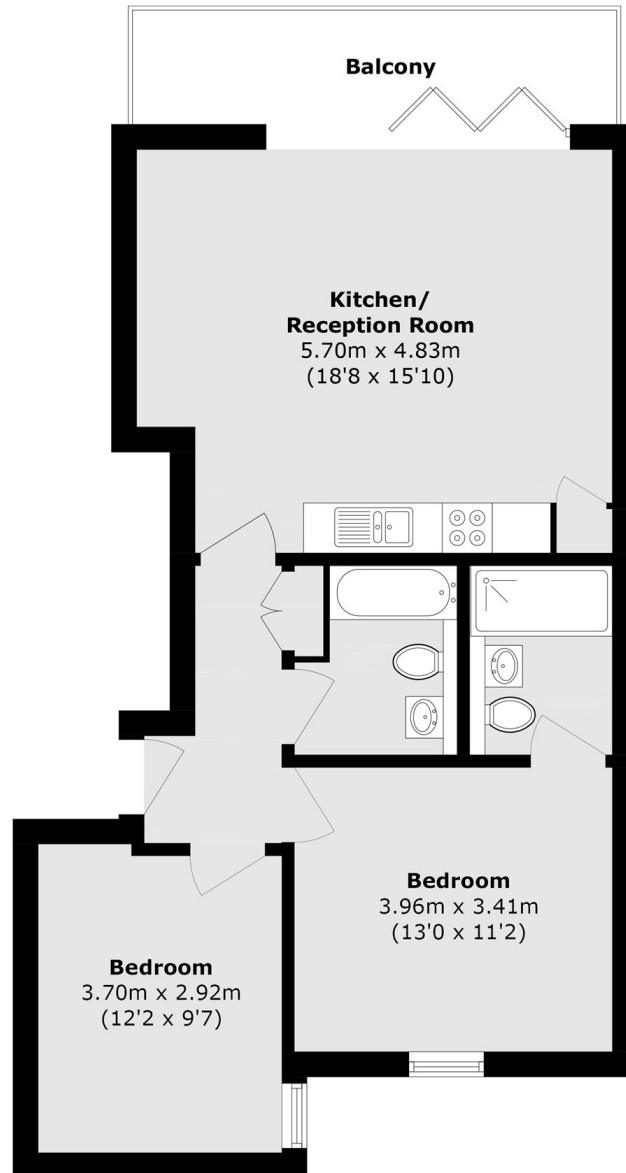
80% NOW SOLD - PLEASE CALL TO VIEW. Please note - Images may be of development show flat.

Elm Grove is a cul-de-sac situated just off of Worple Road and just under half a mile walk from Wimbledon Broadway allowing easy access to the town centre's restaurants and shops. Transport links include overground, underground and a number of good bus routes.

Features

- Eco Conscious Build
- Two Bedrooms
- Two Bathrooms
- Large Balcony
- Wimbledon - Walking Distance
- Bike & Parcel Store
- Share Of The Freehold
- Low Running Costs

Elm Grove, Wimbledon, SW19



Total area (approx.): 65.4 sq. m (703.9 sq. ft)
Balcony area (approx.): 7.9 sq. m (85.0 sq. ft)