



KILLYON TERRACE, SW8

£450,000

Upper victorian maisonette
Well-presented throughout
149 year lease
Large loft space (not demised)
Close to clapham old town
720 Sq Ft



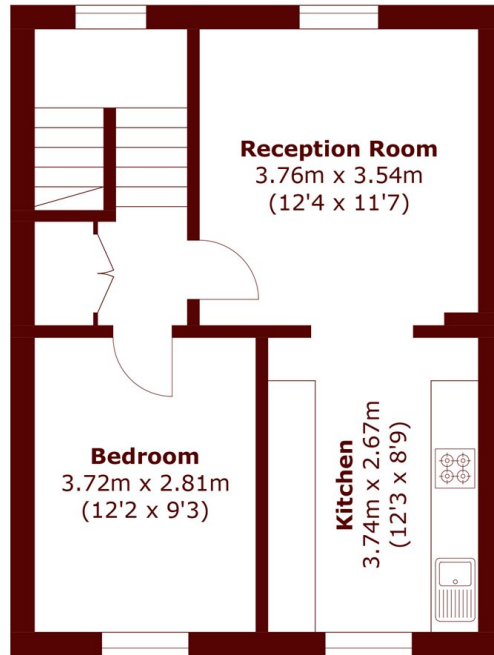
ABOUT THE PROPERTY

A bright upper-floor Victorian conversion flat offering 720 sq ft, a 149+ year lease and large loft with scope to extend (STPP and demise purchase), moments from Clapham Common.

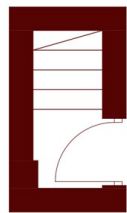
Killyon Terrace is a gated mews located just off Killyon Road which is a quiet residential street in Clapham Old Town. Local transport links include Wandsworth Road Overground station (part of the London Overground train network), Clapham North Underground Station (Northern Line) which along with excellent local bus services provides quick and easy access into the City, West End and Canary Wharf.



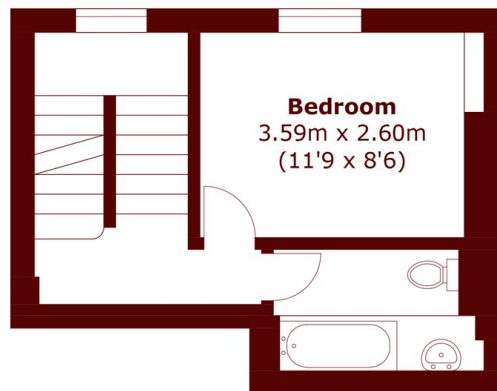
STEP INSIDE KILLYON TERRACE



Second Floor



Ground Floor



First Floor

Total area (approx.): 66.9 sq. m (720.0 sq. ft)

Clapham
020 7501 3666

Energy Rating: D We aim to make our particulars both accurate and reliable. However, they are not guaranteed; nor do they form part of an offer or contract. If you require clarification on any points then please contact us, especially if you're traveling some distance to view. Please note that appliances and heating systems have not been tested and therefore no warranties can be given as to their good working order

**MARSH &
PARSONS**