



Tooting High Street, SW17

£375,000

A charming and beautifully presented two double bedroom apartment in the heart of Tooting with excellent proportions throughout. The property retains a generous reception room, two double bedrooms, a stylish bathroom and a separate kitchen. The property also benefits from a share of the freehold, shared gardens and lift access.

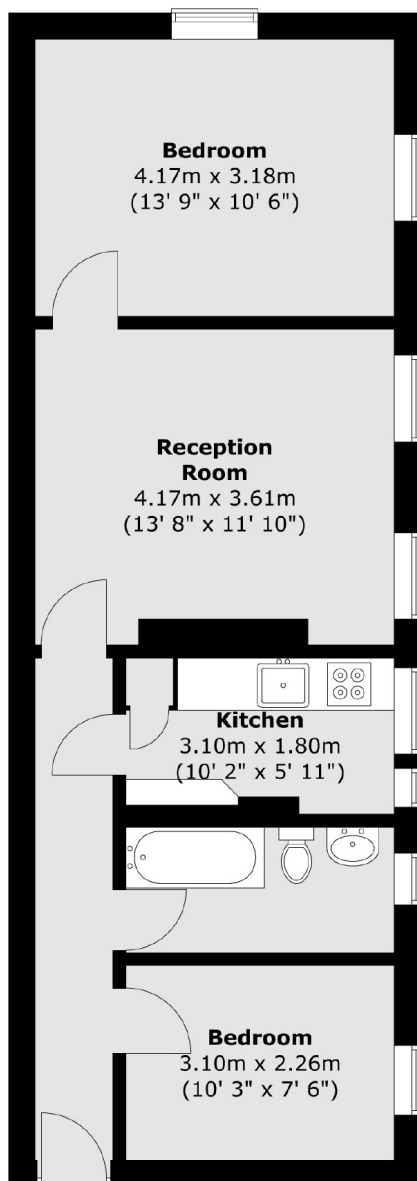
Marion Court resides in a gated development conveniently located for the bustling town centres of Tooting Broadway with its vast shops, bars and restaurants only a short walk away. Excellent transport links are also on the doorstep with Tooting Broadway Underground and Tooting and Earlsfield Overground stations nearby.

Features

- Two Double Bedrooms
- Family Bathroom
- Share of the Freehold
- Shared Gardens
- Desirable Location
- Close to Local Amenities

Tooting High Street, London, SW17

Fourth Floor



Total area (approx.) : 53.9 sq. m (580 sq. ft)