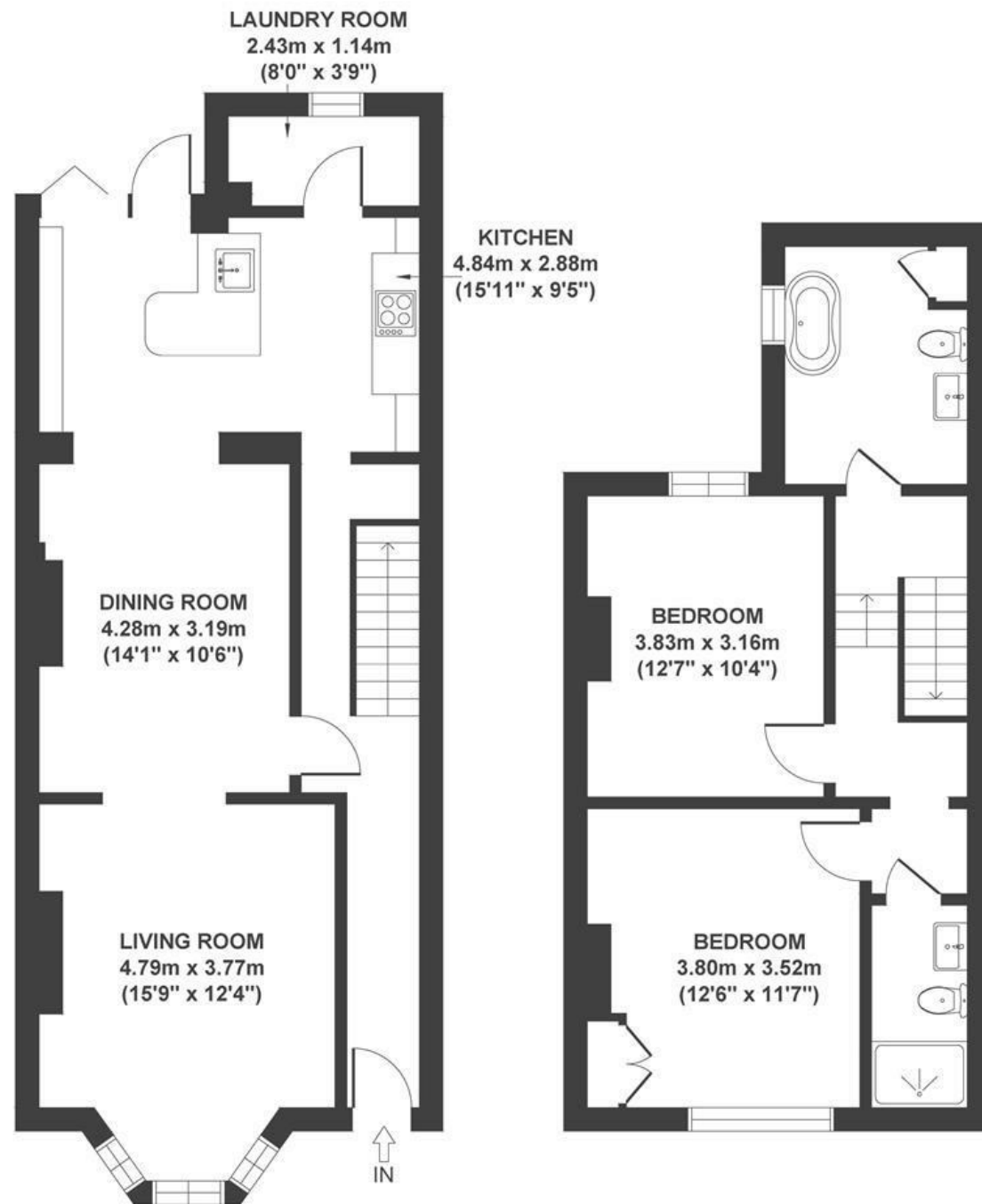


Queen Victoria Road

WESTBURY PARK

APPROXIMATE FLOOR AREA
103 SQM / 1109 SQFT



Boardwalk

Queen Victoria

, BRISTOL



£650,000



2 Bedrooms



BS6 7PE



2 Bathrooms

"We designed this house for hosting and have had many happy events with friends and family. At Christmas we host up to eighteen people around a dinner table with a full Christmas meal for friends. In the summer we open the bi folds and BBQ for friends. And then there are the quieter moments, relaxing in the bath with a good book or a cozy evening in the lounge with the fire."

