



10 King Arthur Close, Cheltenham, GL53 7EX

£1,850 PCM



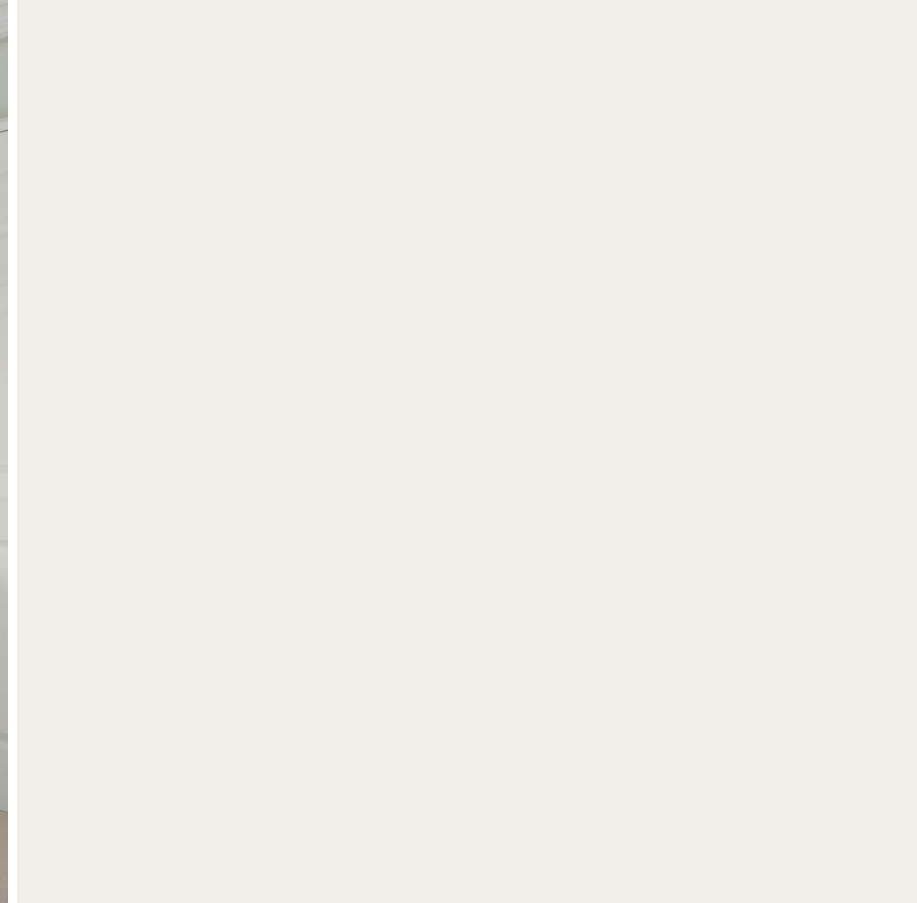
£1,850 PCM

10 King Arthur Close

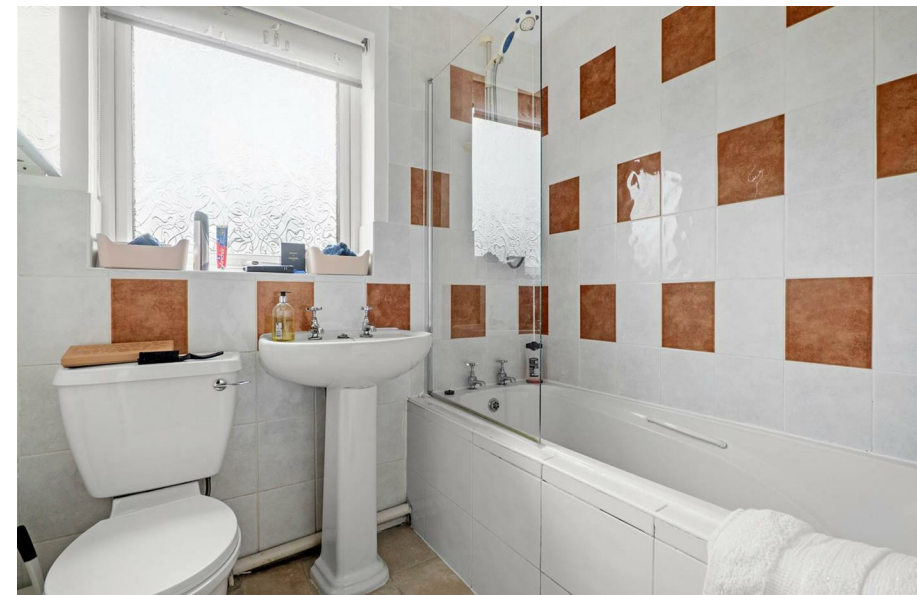
Cheltenham, GL53 7EX

- Three Double Bedrooms
- Good Sized Garden
- Near Excellent Schools
- Off Road Parking
- Close to Green Spaces



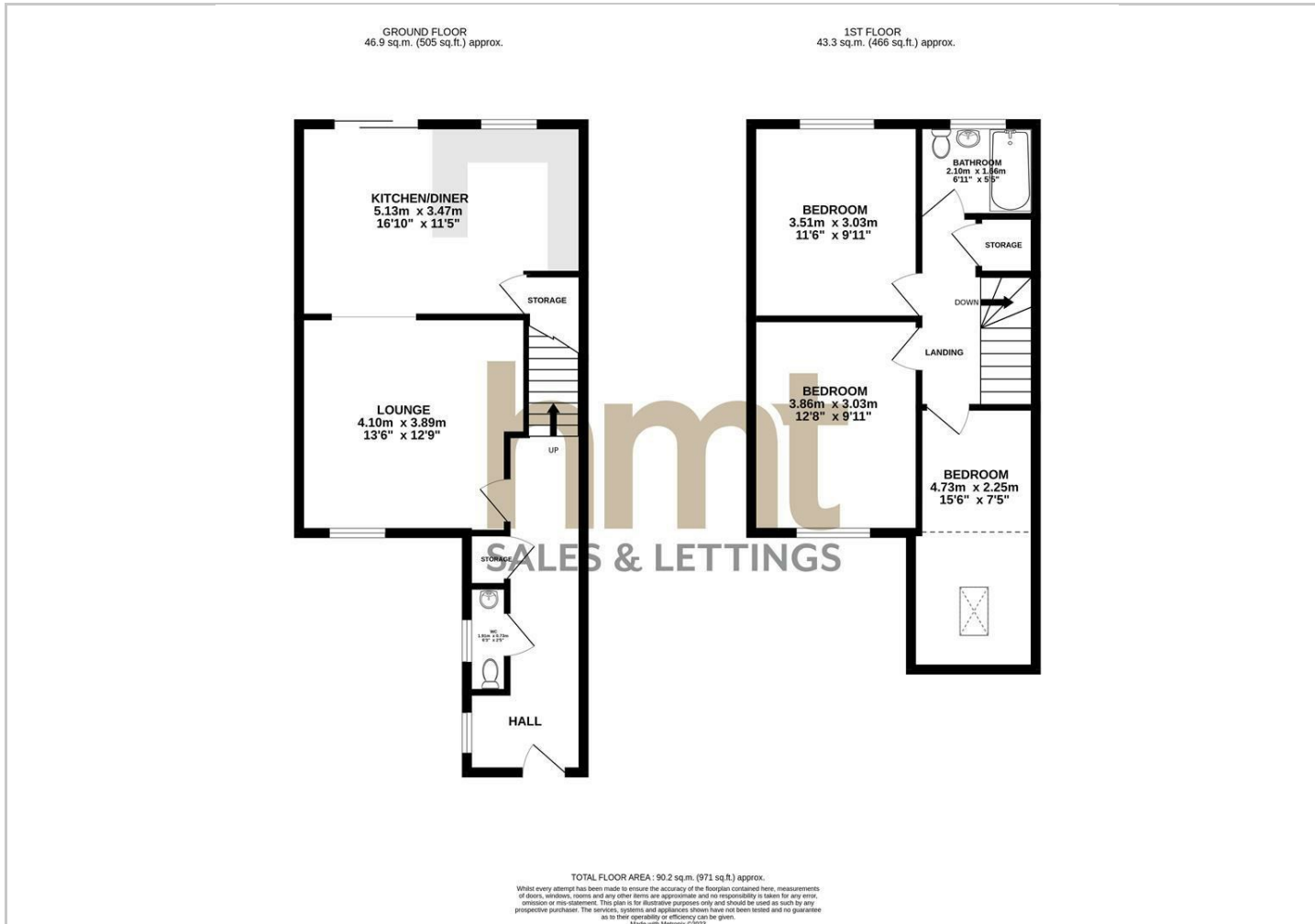


Directions

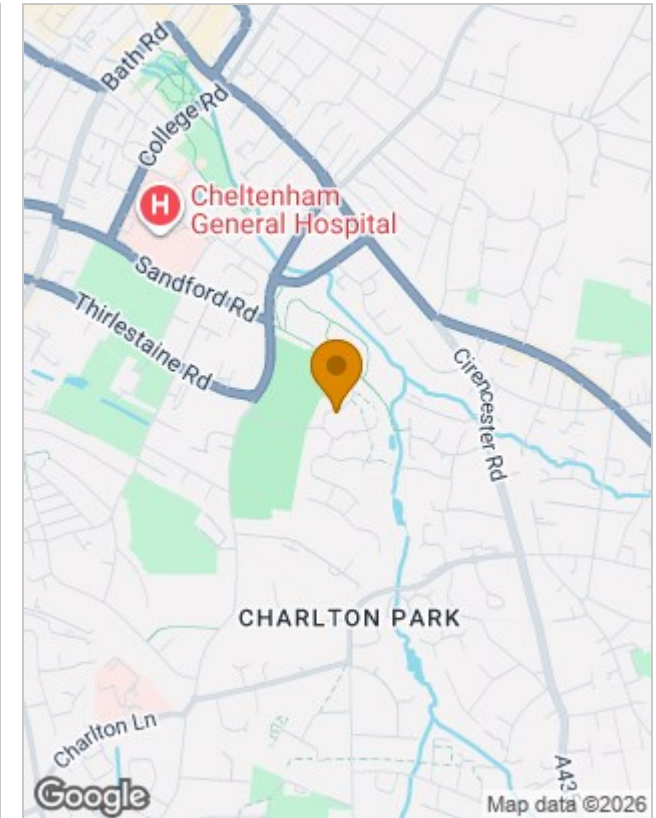




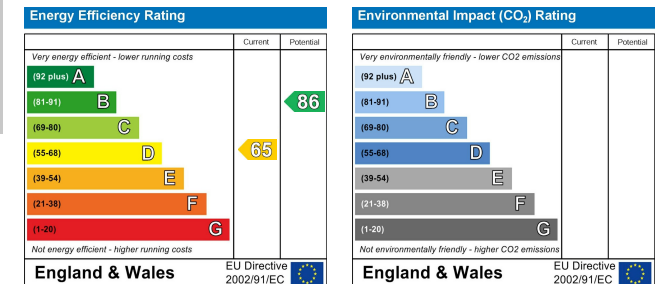
Floor Plans



Location Map



Energy Performance Graph



Viewing

Please contact our HMT Office on 01242 521322 if you wish to arrange a viewing appointment for this property or require further information.

The particulars are set out as a general outline only for the guidance of intended purchasers or lessees, and do not constitute, any part of a contract. Nothing in these particulars shall be deemed to be a statement that the property is in good structural condition or otherwise nor that any of the services, appliances, equipment or facilities are in good working order. Purchasers should satisfy themselves of this prior to purchasing.