



Sheelin Crescent, Nuneaton

4  2  1  

**Sell MyHome**<sup>TM</sup>  
.co.uk





- IMMACULATE DETACHED PROPERTY
- FOUR BEDROOMS
- SPACIOUS OPEN PLAN KITCHEN DINING ROOM
- LARGE REAR ENCLOSED GARDEN
- COUNCIL TAX BAND B
- OFFERED WITH NO UPWARD CHAIN
- TWO BATHROOMS
- DRIVEWAY LEADING TO A GARAGE
- EPC HAS BEEN ORDERED

#### OFFERED WITH NO UPWARD CHAIN

We are delighted to offer to the market this truly superb, detached family home built by Redrow Homes to a high specification. The accommodation internally comprises of an entrance hall, guests cloakroom, lounge, open plan family dining kitchen and utility room, four bedrooms, en-suite shower room and family bathroom. Externally there is a driveway leading to a garage and a generous sized rear enclosed garden. An internal inspection is highly recommended to appreciate the quality of accommodation on offer.



Price: £400,000







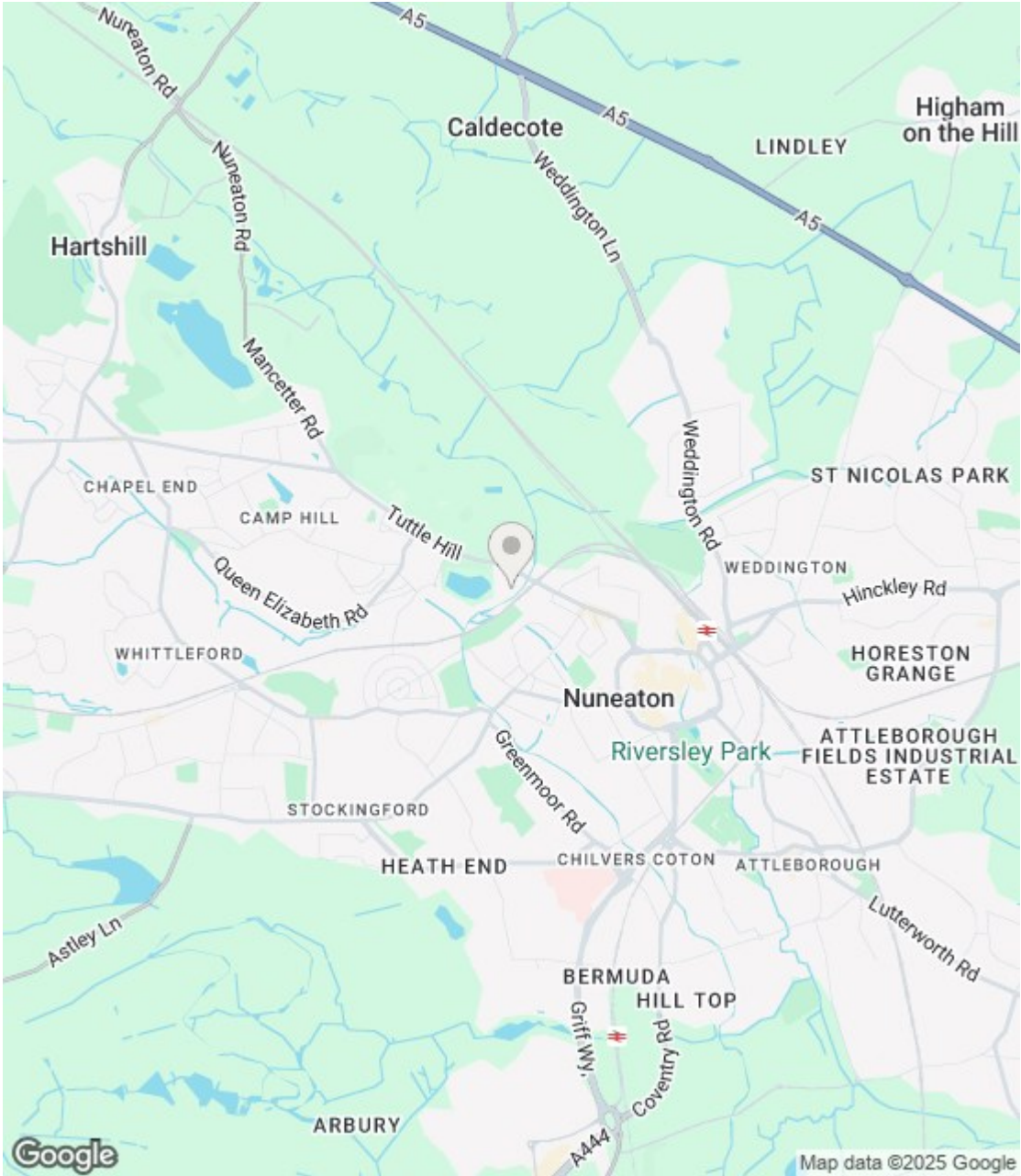


Energy Efficiency Rating

	Current	Potential
Very energy efficient - lower running costs		
(92 plus) <b>A</b>		
(81-91) <b>B</b>		
(69-80) <b>C</b>		
(55-68) <b>D</b>		
(39-54) <b>E</b>		
(21-38) <b>F</b>		
(1-20) <b>G</b>		
Not energy efficient - higher running costs		
England & Wales	EU Directive 2002/91/EC	

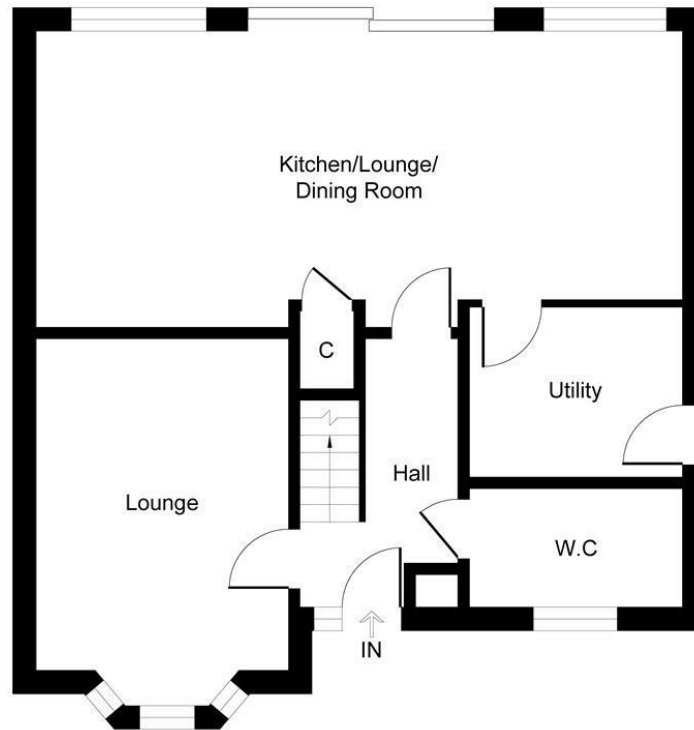
Environmental Impact (CO<sub>2</sub>) Rating

	Current	Potential
Very environmentally friendly - lower CO2 emissions		
(92 plus) <b>A</b>		
(81-91) <b>B</b>		
(69-80) <b>C</b>		
(55-68) <b>D</b>		
(39-54) <b>E</b>		
(21-38) <b>F</b>		
(1-20) <b>G</b>		
Not environmentally friendly - higher CO2 emissions		
England & Wales	EU Directive 2002/91/EC	

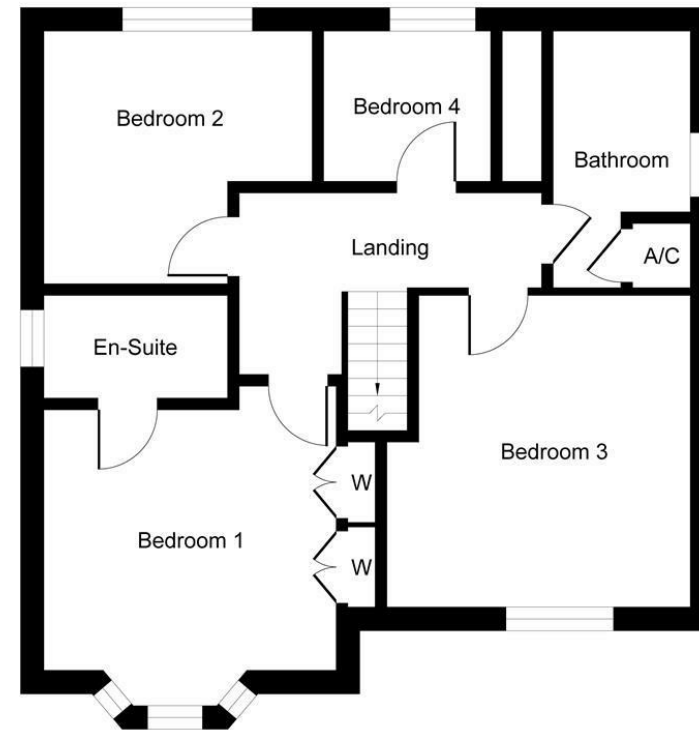




## Sheelin Close Nuneaton CV10 0HZ



Ground Floor



First Floor

Illustration for identification purposes only, measurements are approximate, not to scale.

(1) MONEY LAUNDERING REGULATIONS: Intending purchasers will be asked to produce identification documentation at a later stage and we would ask for your co-operation in order that there is no delay in agreeing the sale. (2) These particulars do not constitute part or all of an offer or contract. (3) The description, measurements & specifications indicated have been approved by the Vendor, for guidance only and as such must be considered incorrect. While every effort has been made to ensure the accuracy of the information provided, we cannot be held responsible for any errors or omissions. Potential buyers are advised to recheck measurements before committing to any expense. (4) We have not tested any apparatus, equipment, fixtures or services and it is in the buyers interest to check the working condition of any appliances. (5) Financial Advice: Any financial information or advice provided in this brochure is not intended as financial or legal advice. We recommend that you seek independent financial and legal advice before making any decisions regarding property transactions. (6) Where an EPC, or a Home Report (Scotland only) is held for this property, it is available for inspection at the branch by appointment. If you require a printed version of a Home Report, you will need to pay a reasonable production charge reflecting printing and other costs. Energy Performance Certificates are available upon request. EPC ratings and related details are accurate as of the date of publication, but may change over time. (7) We are not able to offer an opinion either written or verbal on the content of these reports and this must be obtained from your legal representative. (8) Subject to Availability: All properties and prices are subject to availability and may be withdrawn or amended without notice. We do not guarantee the continued availability of any property listed in this brochure. (9) Third-Party Services: Any references to third-party services, such as solicitors, surveyors, or financial advisors, are for information only. We do not endorse or recommend any particular service provider. (10) Whilst we take care in preparing these reports, a buyer should ensure that his/her legal representative confirms as soon as possible all matters relating to title including the extent and boundaries of the property and other important matters before exchange of contracts. (11) Viewing Arrangements: Viewings of properties are by appointment only and should be arranged through the estate agent. (12) Legal Information: Buyers should verify all legal and planning details with the relevant authorities and professionals before proceeding with a purchase.