



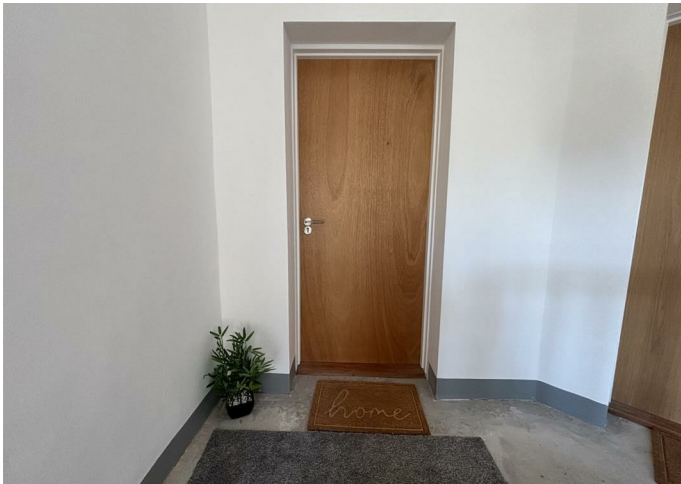
Flat - Purpose Built (EPC Rating: B)

3A CARRADALE STREET, COATBRIDGE, ML5 1PS

Offers over
£149,995

FEATURES

- Newly Converted 2-bedroom flat
- Lounge with new flooring
- Ideal for first-time buyers
- Easy access to motorways
- Modern kitchen with utility
- Modern bathroom with shower
- Close to town centre
- Near train stations



SWEET HOME



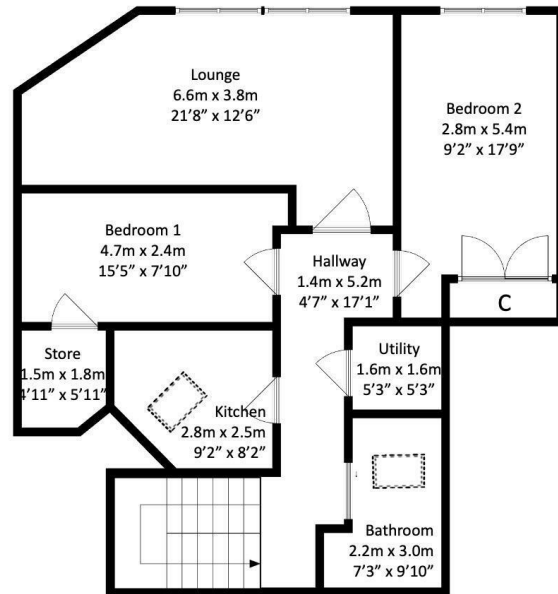
2 Bedroom Flat - Purpose Built located in Coatbridge

Caroline Morrison of Sweet Home Scotland is proud to bring to the market this newly converted and quirky two-bedroom flat. This property presents an excellent opportunity for first-time buyers or professionals seeking a vibrant town centre location. The property boasts easy access to motorway links, making commuting a breeze, while nearby train stations ensure convenient travel options.

The flat features two double bedrooms, perfect for restful nights. The modern kitchen is designed for both functionality and style, equipped with contemporary fittings that will delight any home cook. A utility room adds to the practicality of the space, providing additional storage and laundry facilities.

The quirky inviting lounge offers a comfortable area for relaxation and socialising, while the modern bathroom, complete with a shower over the bath, caters to all your bathing needs. The property has been enhanced with new flooring, adding a fresh and contemporary feel.

Residents will appreciate the proximity to local amenities, including schools, restaurants, and the popular Time Capsule leisure centre. For those who enjoy the outdoors, Drumpellier Country Park is just a stone's throw away, providing a lovely escape for walks and recreational activities.



Call us on

01236 677500

sales@sweet-home.co.uk

<https://sweet-home.co.uk/>

Council Tax Band

New Build

Energy Efficiency Rating		Current	Potential
<i>Very energy efficient - lower running costs</i>			
(92 plus)	A		
(81-91)	B	82	82
(69-80)	C		
(55-68)	D		
(39-54)	E		
(21-38)	F		
(1-20)	G		
<i>Not energy efficient - higher running costs</i>			
Scotland		EU Directive 2002/91/EC	

Agents Note: Whilst every care has been taken to prepare these particulars, they are for guidance purposes only. All measurements are approximate and are for general guidance purposes only and whilst every care has been taken to ensure their accuracy, they should not be relied upon and potential buyers are advised to recheck the measurements.

