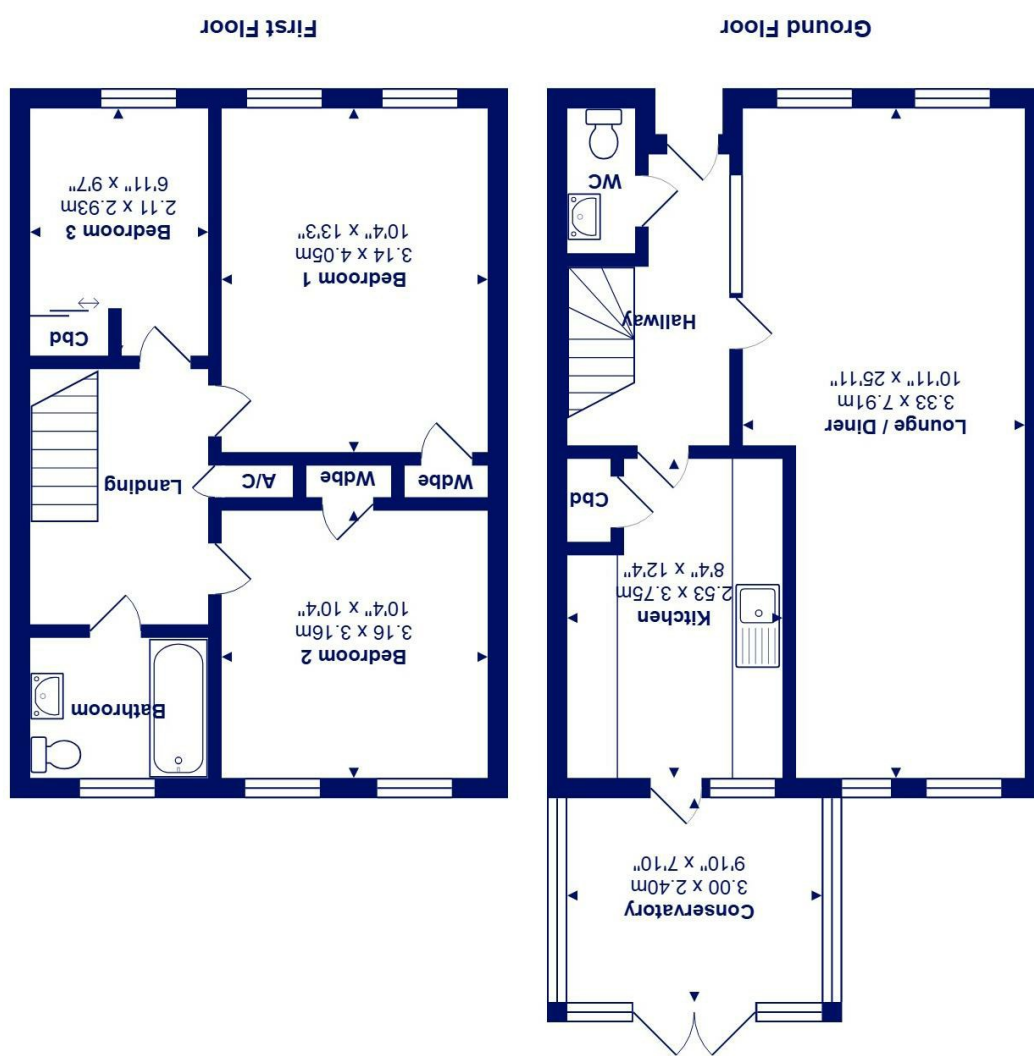


All measurements are approximate and for display purposes only
Total Area: 89.4 m² ... 963 ft²



25 Kilmington Way, Highcliffe On Sea, BH23 5BL

£425,000

Mitchells
1963 — TODAY

An immaculate, mock Georgian style townhouse, situated moments from the bustling village centre, cliff top and beach. Comprehensively refurbished inside and out, this stylish home offers nearly 1000 sq ft of living space with a superb, sunny rear garden with off road parking and a garden store.

Located just to the north of the high street in a very convenient position, the current owners have recently refurbished the house with it now being in A1 condition. Equally suitable for family/retirement or second home living, these homes have always been enormously popular and this one is first class example of one.

- Show home condition inside and out with spacious room sizes totalling nearly 1000 sq ft
- Original wood block flooring to ground floor
- Brand new, contemporary styled kitchen with some integrated appliances, leading to the conservatory
- Spacious through sitting/dining room with access to the rear garden
- Three bedrooms with a refitted bathroom with designer sanitary ware and quality ceramic tiling
- Tasteful decor and replacement internal doors, gas heating and UPVC double glazing
- Easily maintained, courtyard garden with all day sunshine and access to the parking area
- Super spot, right by the footpath that cuts to the high street with the beach being a little further on

EPC Rating Band: D

Council Tax Band: D

Freehold

Successful buyers will be required to complete online identity checks provided by Lifetime Legal. The cost of these checks is £49 inc. VAT per purchase which is paid in advance, directly to Lifetime Legal. This check verifies your identity in line with our obligations as stipulated by our regulatory body, HMRC

