





## Aldhelm Rise, Corsham

Guide Price £575,000

🛏 4 🚿 2 🚗 1

- Executive detached family home built by Cotswold Homes
- Huge L shaped kitchen/diner/family room with French doors to the garden
- En suite shower room, modern family bathroom and downstairs WC
- Good sized Living room
- Wide garden with raised terrace for dining, relaxing and BBQ's
- 6 years NHBC remaining
- 4 excellent bedrooms with fitted wardrobes to all
- Separate Utility room with access to garden
- Garage and long driveway to front
- Just under a mile to Corsham, and close to countryside walks.



A superb family sized, executive home which ticks every box! Living accommodation includes a generous Kitchen/Dining/family room with French doors out onto a raised terrace plus a decent sized Living room and essential separate utility. 4 excellent bedrooms all have built in wardrobes. Located in a quiet corner of a small enclave of houses, yet within walking distance of local countryside, lakeside walks and within a mile of Corsham's amenities. What more could you want??

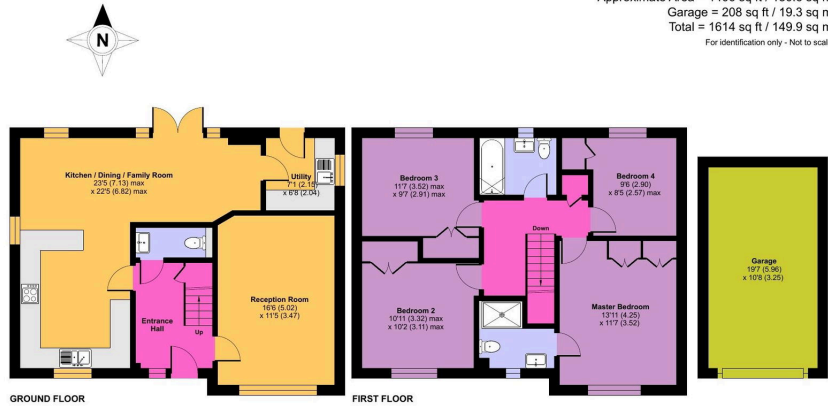




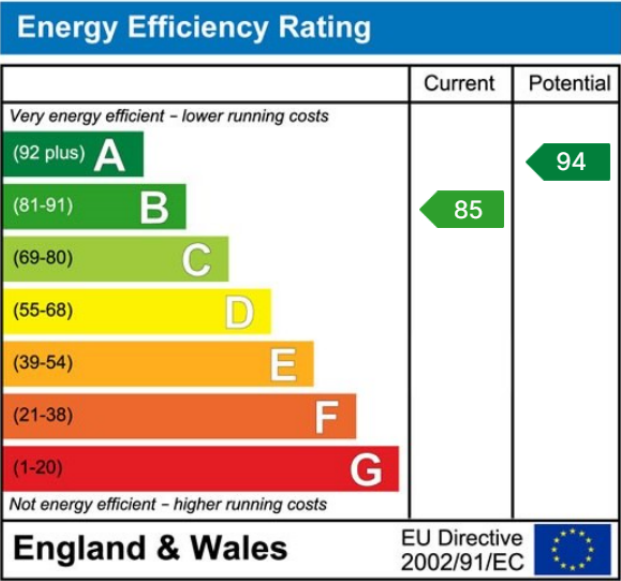


# Aldhelm Rise, Corsham, SN13

Approximate Area = 1406 sq ft / 130.6 sq m  
 Garage = 208 sq ft / 19.3 sq m  
 Total = 1614 sq ft / 149.9 sq m  
 For identification only - Not to scale



① Floor plan produced in accordance with RICS Property Measurement 2nd Edition, incorporating International Property Measurement Standards (IPMS2 Residential). © richcom 2020. Produced for Jaine Whitfield Property Services. REF: 1307578



☎ 01225 705650  
 ✉ hello@jainewhitfield.co.uk  
 🌐 www.jainewhitfield.co.uk



Part of the Internation Group of Estate Agents Power by EXP UK. Registered address: 5 Churchill Place, 10th Floor, London E14 5HU