



Asmuns Hill, Hampstead Garden Suburb, NW11

Freehold

£1,095,000



800 Finchley Road, Hampstead Garden Suburb, London, NW11 7TJ

020 8458 5000

[sales@litchfields.com](mailto:sales@litchfields.com)

[www.litchfields.com](http://www.litchfields.com)

Offices also in Highgate

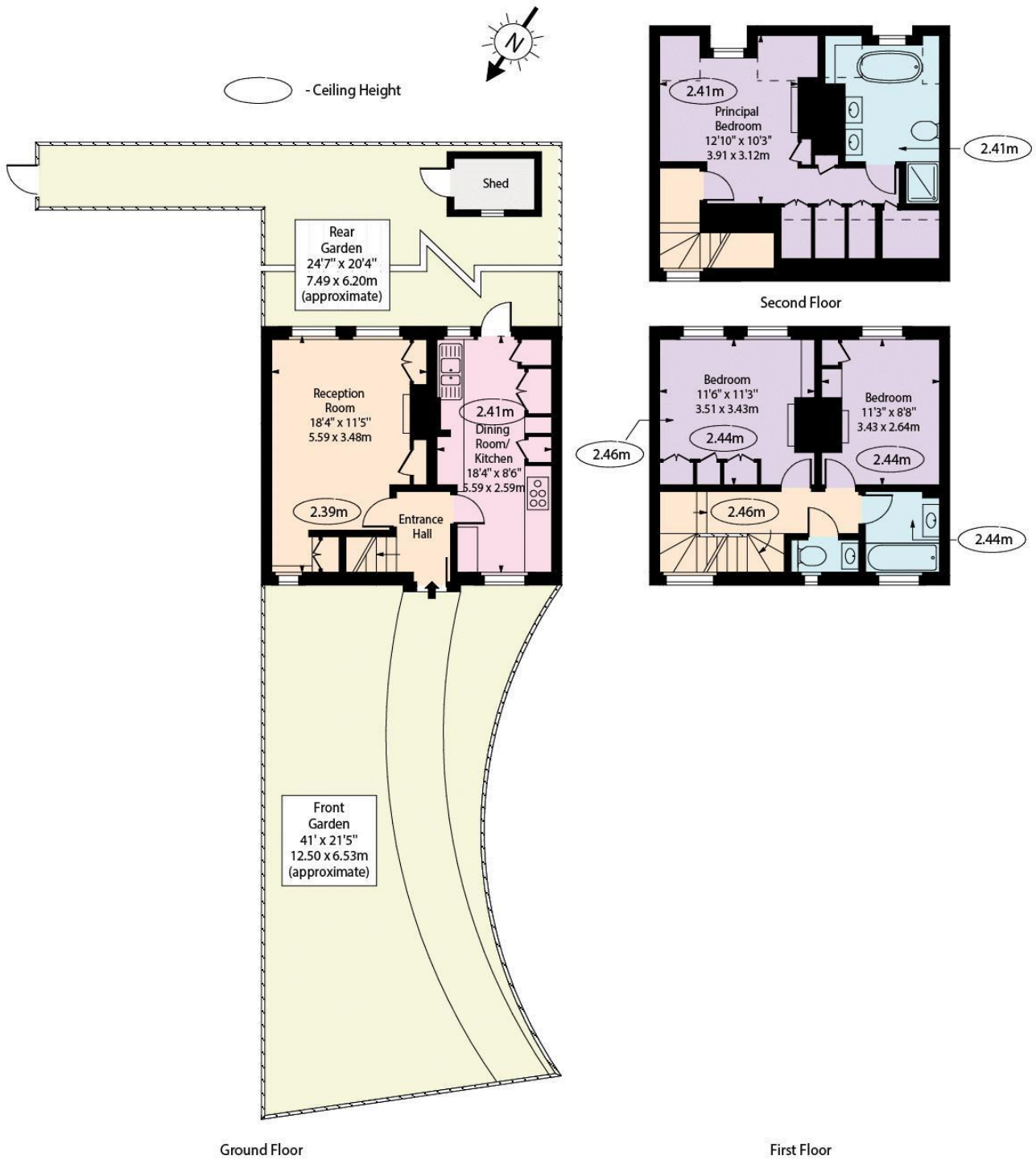
A delightful 3 bedroom Grade II Listed cottage built in 1910 and designed by Parker & Unwin located within a short walk to the shops, cafes and restaurants of Temple Fortune and 0.9 miles from Golders Green Underground. This lovely and tastefully refurbished property is arranged over 3 levels comprising a reception room, modern kitchen, a principal bedroom with en-suite shower, two further bedrooms and a family bathroom. The property features a south facing garden, underfloor heating to the ground floor and bathrooms. Viewing of this fine, chain free property is highly recommended.



3 bedrooms | Lounge | Kitchen | Family bathroom | En suite bathroom | South-east facing rear garden | EPC=D



Asmunds Hill, NW11



Approx Gross Internal Area 1025 Sq Ft - 95.23 Sq M

Approx Floor Area Including Restricted Heights 1104 Sq Ft - 102.57 Sq M

(Excluding Shed)

For Illustration Purposes Only - Not To Scale Floor Plan by [www.nogaphotostudio.com](http://www.nogaphotostudio.com) Ref: No.53595

This floor plan should be used as a general outline for guidance only. Any intending purchaser or lessee should satisfy themselves by inspection, searches, enquiries and full survey as to the correctness of each statement. Any areas, measurements or distances quoted are approximate and should not be used to value a property or be the basis of any sale or let.