



28 Meadow View Allington Gardens, Allington
Grantham

£128,000

DavidGrace





28 Meadow View Allington Gardens

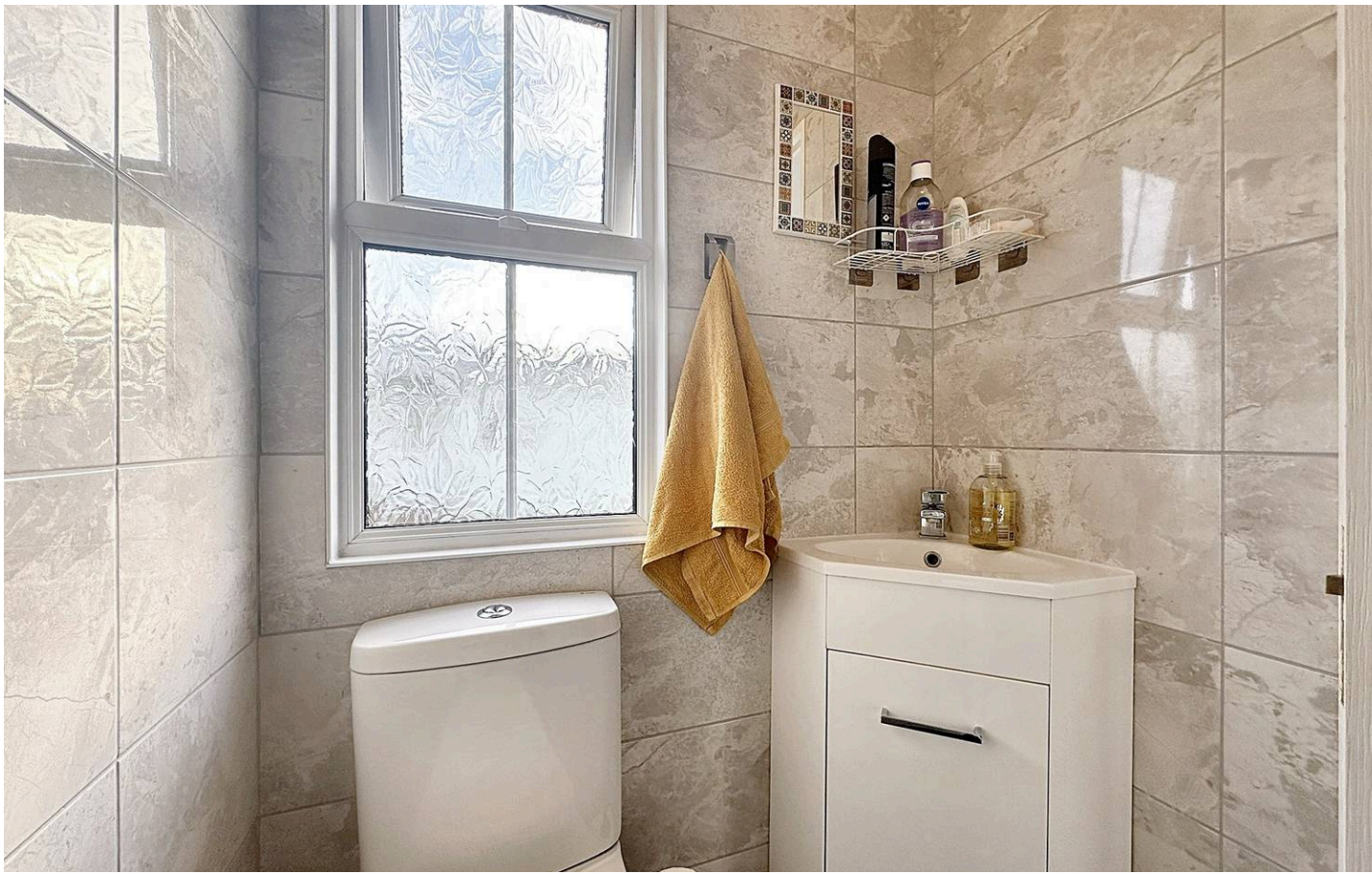
Allington, Grantham

Bright 2-bed park home with meadow views, spacious lounge, modern kitchen-diner, two double bedrooms, enclosed garden, garage, and driveway, perfect for relaxed, comfortable retirement living.

Council Tax band: A

Tenure: Freehold

- Great Location on Allington Gardens
- Lovely Outlook over the Meadow
- Spacious, Light-Filled Lounge
- French Doors Opening to the Garden
- Kitchen and Dining Area
- Two Double Bedrooms with Built-in Wardrobes
- Main Bedroom and WC
- Freshly Decorated Family Bathroom
- Fully Enclosed, Pet-Friendly Garden
- Full-Sized Garage and Private Driveway



Entrance Hall

Lounge

19' 4" x 15' 1" (5.90m x 4.60m)

Kitchen/Diner

19' 4" x 11' 6" (5.90m x 3.50m)

Hallway

Bedroom 1

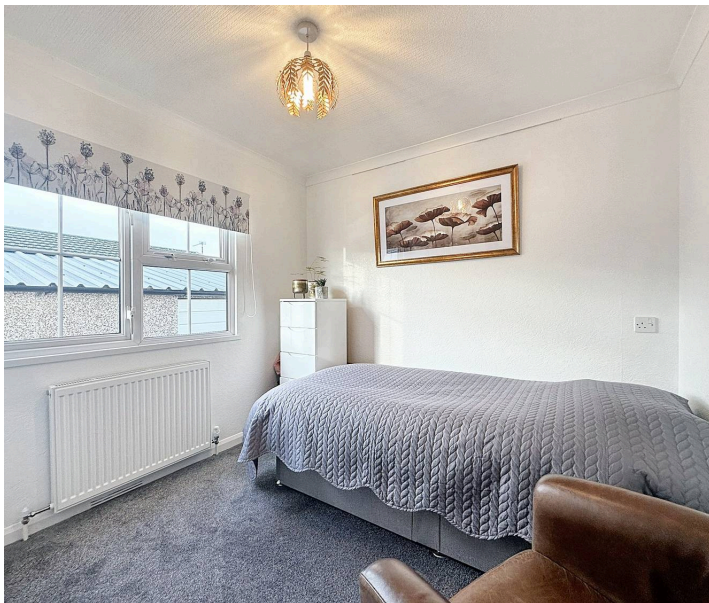
11' 10" x 11' 2" (3.60m x 3.40m)

En-suite

Bedroom 2

9' 6" x 8' 6" (2.90m x 2.60m)

Bathroom





GARDEN

This beautifully presented two-bedroom park home on Allington Gardens enjoys a delightful outlook across the Meadow. Thoughtfully designed, it combines generous living space with a warm, welcoming feel throughout.

The entrance hall provides handy storage, ideal for walking boots, coats, and dog essentials. A bright and spacious lounge sits at the heart of the home, offering lovely views and French doors that open directly onto the garden. The adjoining kitchen and dining room create a perfect setting for hosting guests or enjoying quiet evenings in.

There are two comfortable double bedrooms, each with built-in wardrobes. The main bedroom further benefits from its own private WC. A freshly decorated family bathroom completes the interior.

Outside, the property boasts a full-sized garage and a private driveway. The fully enclosed garden is perfect for pet owners and offers a safe, peaceful space to relax.

Overall, this park home is an excellent example of comfortable, easy living, an ideal place to enjoy retirement in a beautiful setting.

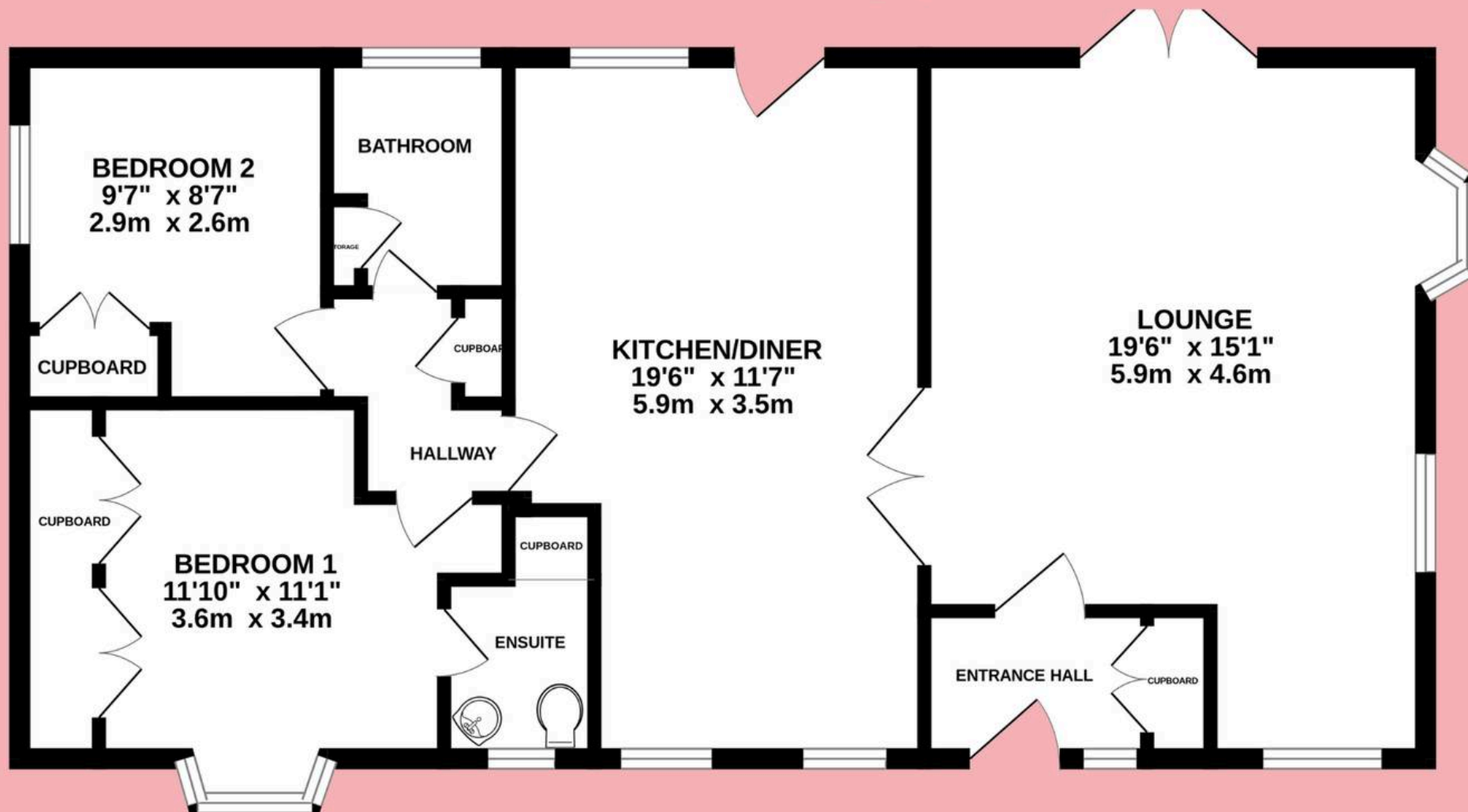


Meadow View, Allington Gardens

Approx Internal area: 769 sq ft / 71.5 m²



DavidGrace
A NEWTON FAMILY ESTATE AGENCY





David Grace Estate Agents

71 High Street, Grantham - NG31 6NR

01476 833833 • sell@davidgrace.co.uk • www.davidgrace.co.uk

DavidGrace