



Clevedon Road, TW1

£1,200,000

Dexters



Clevedon Road, TW1

A beautifully presented two bedroom ground floor apartment situated within the prestigious Richmond Bridge Estate, ideally located close to the sought after Richmond riverside.

Upon entering, you are welcomed by a bright and spacious hallway leading to a well proportioned master bedroom complete with fitted wardrobes and a stylish en suite bathroom finished to a high standard. There is a second generously sized double bedroom, along with a modern family bathroom and a separate utility room. The contemporary kitchen has been recently refurbished and features high end appliances along with ample storage space. The reception room is particularly impressive, offering a spacious and versatile area ideal for both relaxing and entertaining. Situated on the ground floor of a lift serviced building, the property further benefits from secure underground parking, secure bike storage, and access to beautifully maintained communal gardens.

Richmond Bridge Estate is a highly sought after development with secure underground parking, access to a gym, concierge service, impressive communal gardens and views of the River Thames. The Richmond Bridge Estate is a secure gated development situated moments from the River Thames, Richmond town centre and a short distance from Richmond Station, St Margarets Station and Marble Hill Park.

Features

- Newly Renovated Apartment
- Two Double Bedrooms
- Large Balcony
- Secure Underground Parking
- Gym And Concierge Service
- Communal Gardens

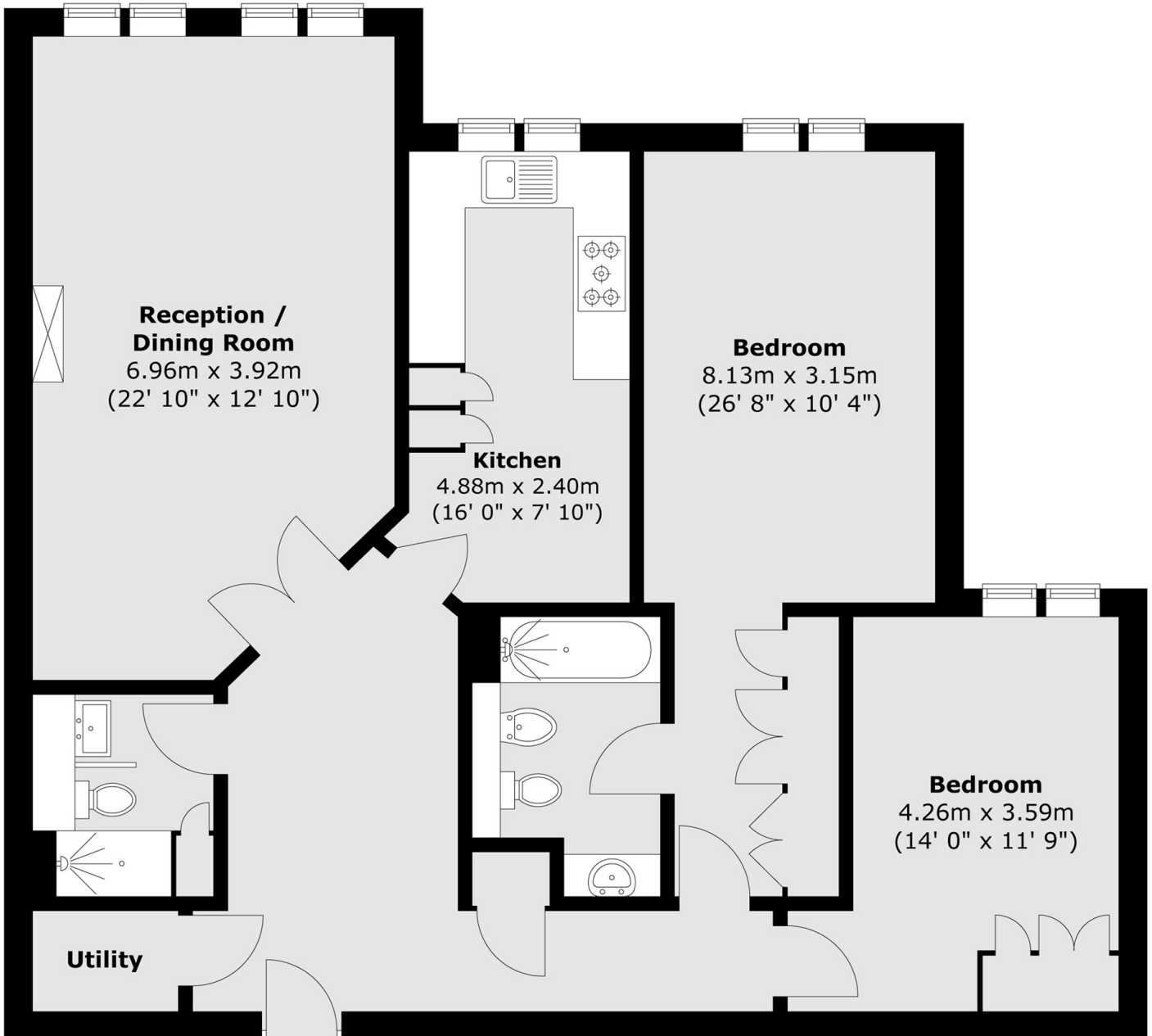






Clevedon Road, , TW1

Ground Floor



Total area (approx.) : 104.6 sq. m (1125 sq. ft)