



*Jordan fishwick*

Apt 7 Connect House, Henry Street, M4  
£1,200 Per Calendar Month



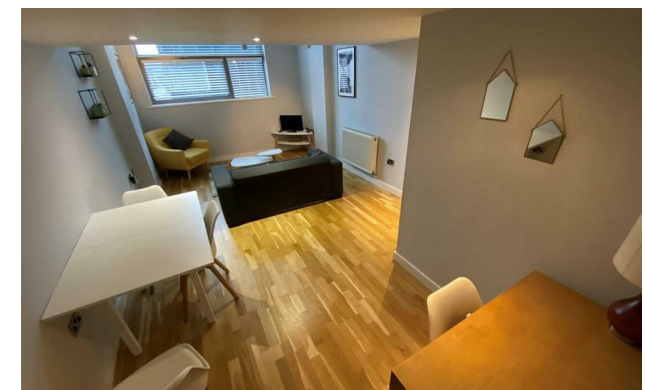
### The Property

Available Late June. This stunning fully furnished second floor duplex one bedroom property located in the heart of Ancoats with modern sleek décor throughout - including Dishwasher & a Washer/Dryer. The apartment itself comprises of a living area with double height ceilings and staircase to the mezzanine level where the bedroom is situated. Separate fitted kitchen with GAS hob and mezzanine master bedroom and plenty of storage space. Council Tax Band D. EPC Rating C. No Pets. PROFESSIONALS ONLY.

**\*VIDEO/ PHOTO OFFERS NOT ACCEPTED - PLEASE CALL TO BOOK A VIEWING\***


## Connect House Manchester M4 5DA

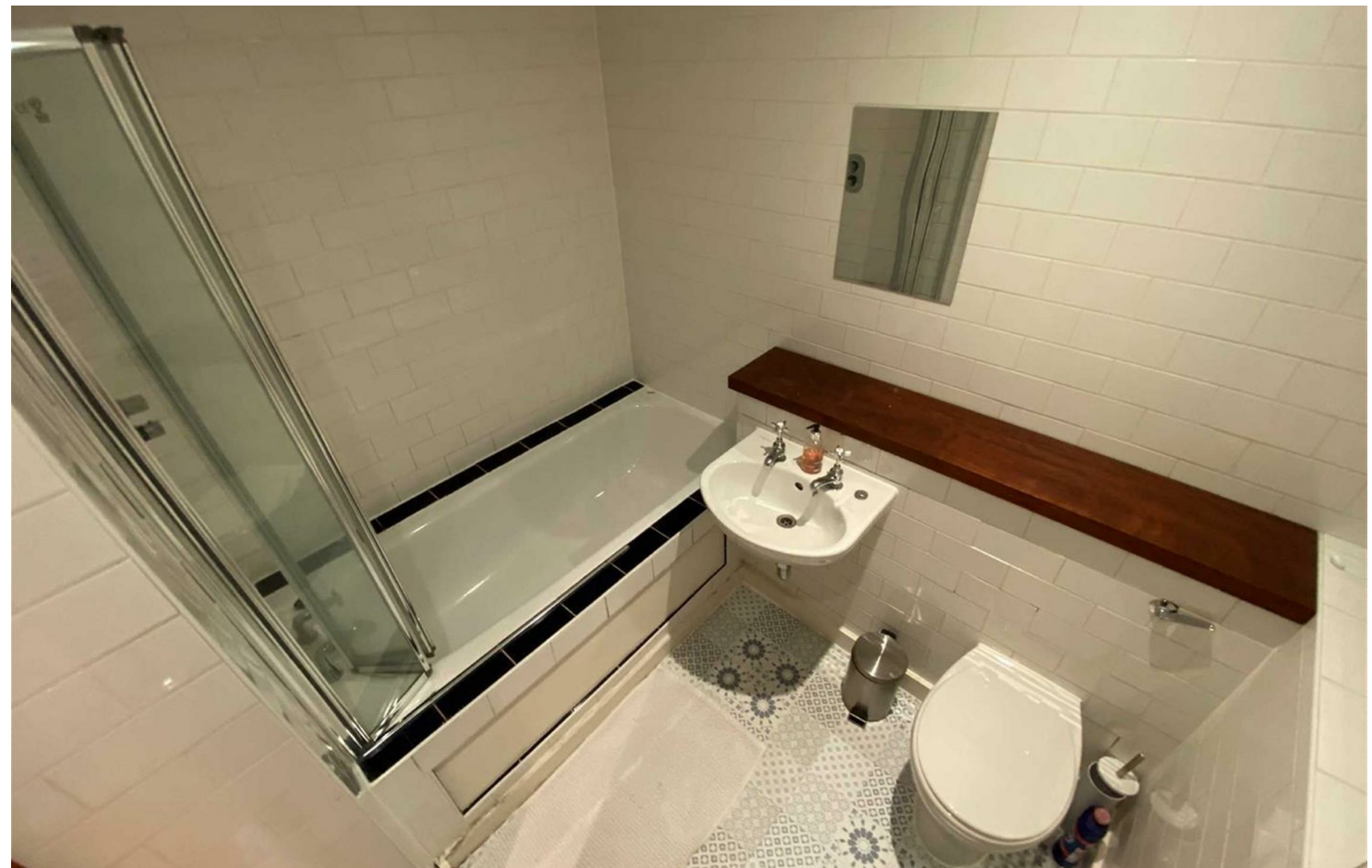
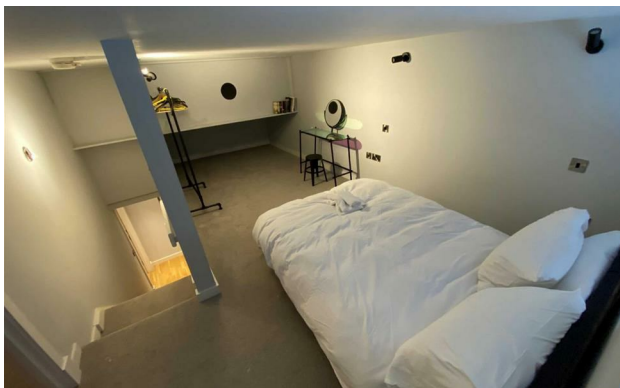
£1,200 Per Calendar Month



- Available Late June
- Duplex One Bedroom Apartment
- 2nd Floor
- Furnished
- Tax Band D
- EPC Rating C
- Ancoats Location
- Close to City Centre



Energy Efficiency Rating		
	Current	Potential
Very energy efficient - lower running costs		
(92 plus) <b>A</b>		
(81-91) <b>B</b>		
(69-80) <b>C</b>	<b>77</b>	<b>81</b>
(55-68) <b>D</b>		
(39-54) <b>E</b>		
(21-38) <b>F</b>		
(1-20) <b>G</b>		
Not energy efficient - higher running costs		
<b>England &amp; Wales</b>	EU Directive 2002/91/EC 	





These particulars are believed to be accurate but they are not guaranteed and do not form a contract. Neither Jordan Fishwick nor the vendor or lessor accept any responsibility in respect of these particulars, which are not intended to be statements or representations of fact and any intending purchaser or lessee must satisfy himself by inspection or otherwise as to the correctness of each of the statements contained in these particulars. Any floorplans on this brochure are for illustrative purposes only and are not necessarily to scale.

Offices at: Offices at Chorlton, Didsbury, Disley, Hale, Glossop, Macclesfield, Manchester Deansgate, Manchester Whitworth Street, New Mills, Sale, Wilmslow and Withington