



## Regency Lawn, NW5

### £1,750,000

A charming double fronted house in Regency Lawn, a sought after Neo-Georgian development on Croftdown Road. The house has four bedrooms along with a secluded garden.

Croftdown Road is a highly sought after residential road within the exclusive and prestigious Dartmouth Park Conservation Area, only 150 metres from the Heath and the local shops and street cafés of Swains Lane.

### Features

- Four Bedrooms
- Freehold
- Prime Location
- Great Transport Links
- Off-Street Parking
- South Facing Garden



## Regency Lawn, NW5

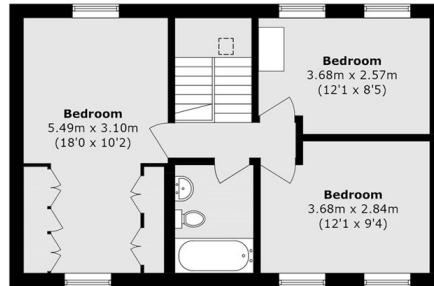
The ground floor features a spacious and modern 18ft dual aspect kitchen/dining room opening onto a secluded south facing garden, with the added benefit of a large utility and storage room.

The first floor offers a generous dual aspect reception room alongside the principal bedroom, which is also dual aspect and benefits from an en suite.

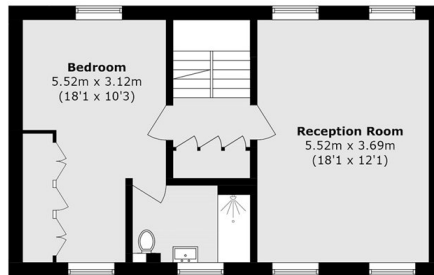
The top floor provides three further double bedrooms and a family bathroom. The flexible layout lends itself equally well to family living and working from home.



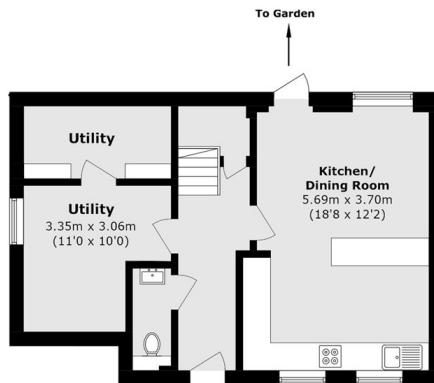
# Regency Lawn, London, NW5



**Second Floor**



**First Floor**



**Ground Floor**

Total Area (approx.): 141.1 sq. m (1518.8 sq. ft)