



Flat 15, Appin Court Roxborough Park, Harrow, HA1 3BJ
£475,000





Flat 15, Appin Court Roxborough Park, Harrow, HA1 3BJ

£475,000

A rare opportunity to acquire an exceptional top floor penthouse apartment, offered chain free on a desirable residential street in Harrow on the Hill.

This stunning home offers space and specification rarely found at this level. The crown jewel is an extraordinary 1,000 sq ft private terrace, an expansive outdoor retreat with open sky views, ideal for entertaining or simply enjoying as your own elevated sanctuary.

The apartment itself is finished to a high standard throughout, featuring two bathrooms plus a separate WC, and benefits from a remarkably secure 983 year lease, providing complete peace of mind for any purchaser.

Perfectly positioned just a 5 minute walk from Harrow on the Hill Station, with its fast links into Central London, this is a truly unique offering that combines penthouse living with outstanding practicality.

Early viewing is strongly recommended.

Description

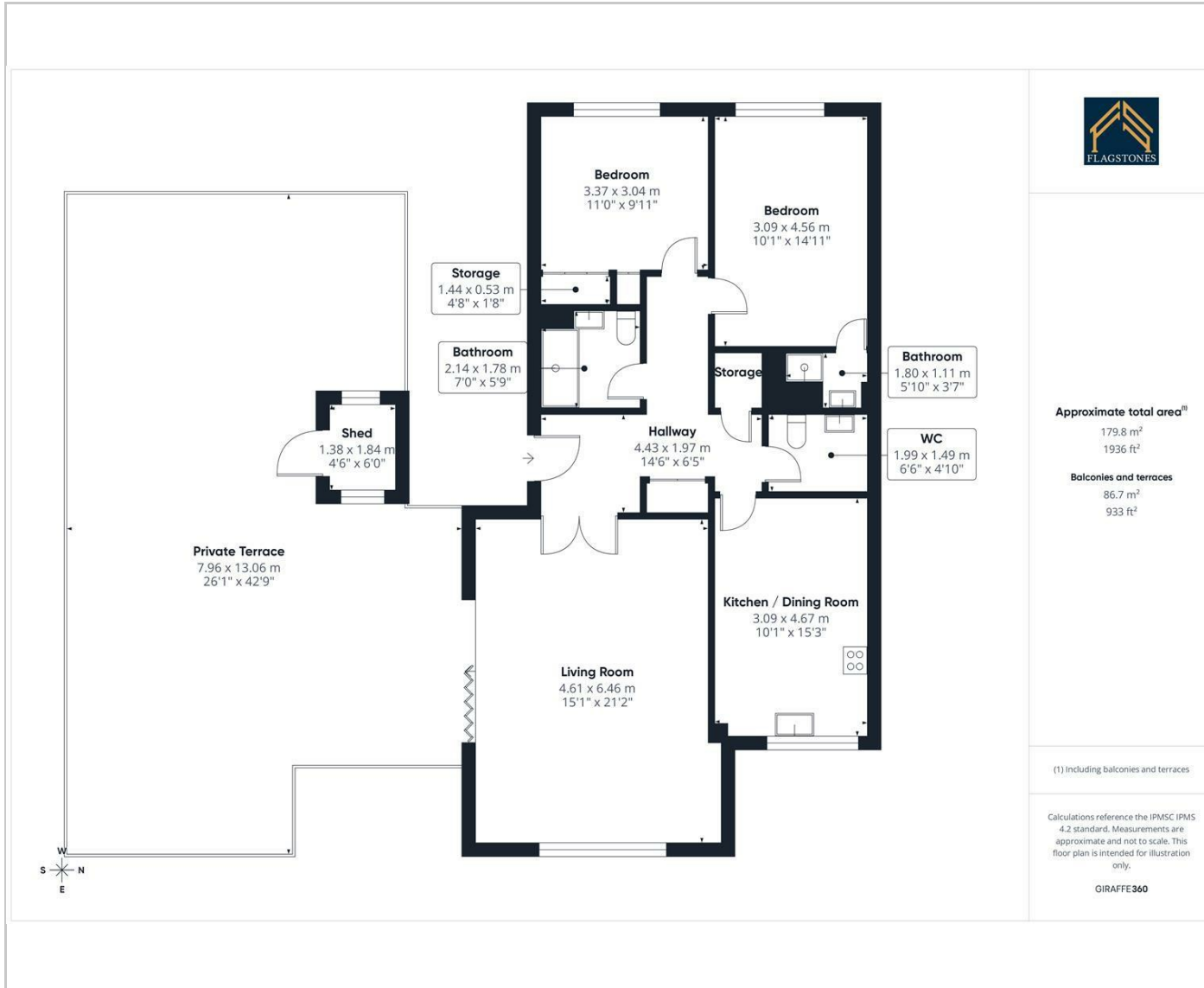


Situation

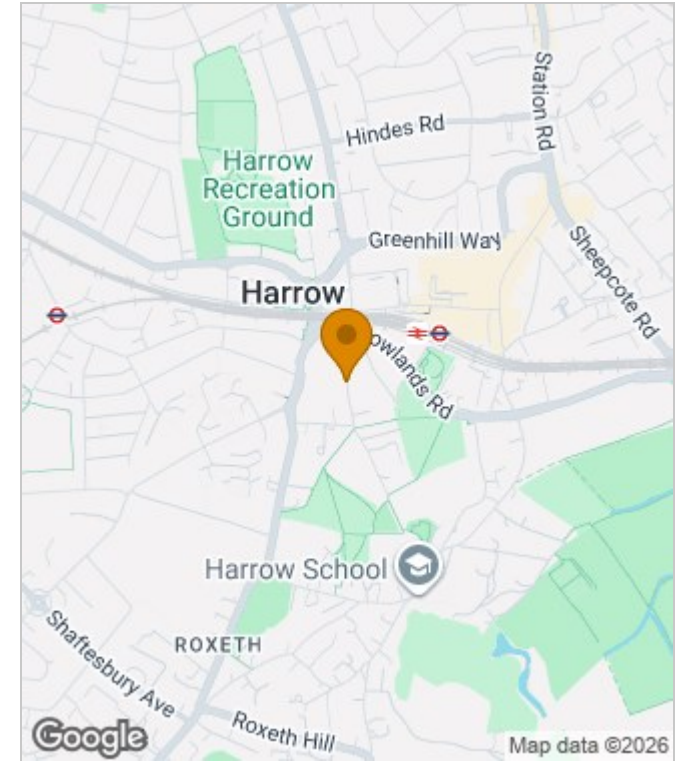


null
Council Tax Band:
Available:

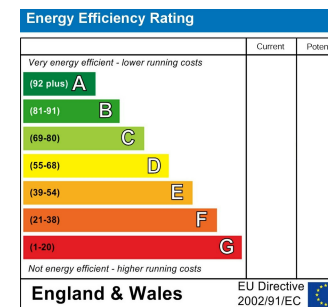
Floor Plans



Area Map



Energy Performance Graph



These particulars, whilst believed to be accurate are set out as a general outline only for guidance and do not constitute any part of an offer or contract. Intending purchasers should not rely on them as statements of representation of fact, but must satisfy themselves by inspection or otherwise as to their accuracy. No person in this firm's employment has the authority to make or give any representation or warranty in respect of the property.