



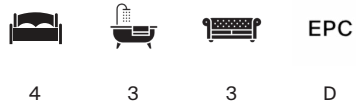
SAVERY DRIVE

Long Ditton, Surbiton, Surrey KT6



# DETACHED HOUSE FOR SALE CLOSE TO SURBITON STATION

A well-presented detached family home offering approximately 1,631 sq ft of flexible accommodation in a quiet and highly sought-after residential setting.



Local Authority: Elmbridge Borough Council

Council Tax band: F

Tenure: Freehold



## DESCRIPTION

The property features a spacious reception room, a kitchen/breakfast room, separate playroom, utility room and guest cloakroom.

Upstairs, there are four generous bedrooms, including a principal suite with en suite bathroom, a family bathroom and a versatile study/nursery.

Outside, the house benefits from a private driveway, integral garage and a rear garden ideal for family life and entertaining.











## LOCATION DESCRIPTION

Nearby Surbiton is bordered on one side by the River Thames, which provides opportunities for walking, running, and cycling along the towpath. The town centre offers a selection of shops, restaurants, supermarkets, and coffee shops, while the large market town of Kingston, located just along the river, provides a wider range of high-street brands.

Communication links are excellent, with the station located in the town centre less than a mile away, offering a direct and fast service to London Waterloo. The A3 is also ideally positioned to provide access to central London and the South, and it connects with the M25.

There is an excellent choice of recreational activities nearby. Sandown Park offers horse racing, skiing, golf, go-karting, a gym, and squash. The historic Hampton Court Palace and the National Trust-owned Claremont Landscape Gardens are also close by. Additionally, there are several golf courses in the area, including Surbiton, Coombe Hill, and Coombe Wood.

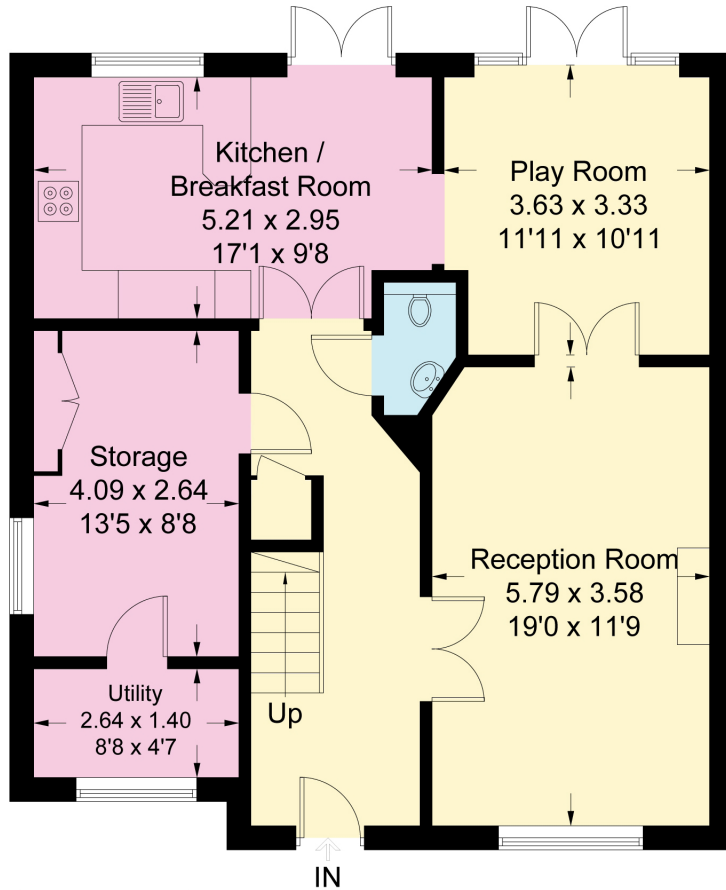
Schooling in the area is outstanding, with Surbiton High, Shrewsbury House, Lady Eleanor Hollis, The Tiffin Girls' School, and Hampton all easily accessible.



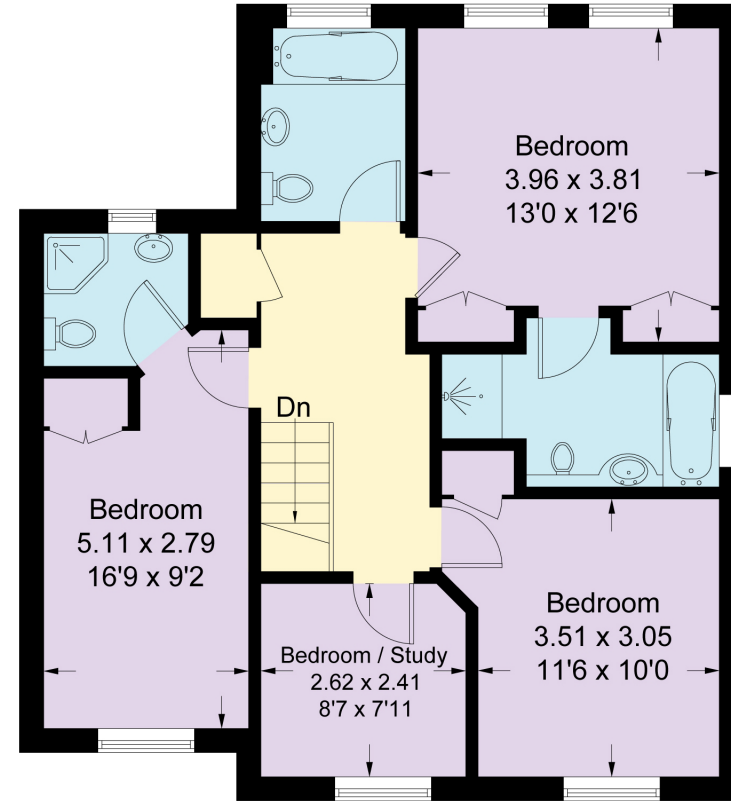


# Savery Drive, KT6

Approximate Gross Internal Area = 151.5 sq m / 1631 sq ft



**Ground Floor**



**First Floor**

Measured in accordance with RICS Code of Measuring Practice. To be used for identification and guidance purposes only. Whilst every care is taken in the preparation of this plan, please check all dimensions, shapes and compass bearings before making any decisions reliant upon them. [www.london58.com](http://www.london58.com) © 2026 [hello@london58.com](mailto:hello@london58.com)

This plan is for layout guidance only. Not drawn to scale unless stated. Windows and door openings are approximate. Whilst every care is taken in the preparation of this plan, please check all dimensions, shapes and compass bearings before making any decisions reliant upon them. (ID767266)

**Maisie Bywater**

01372 230466

maisie.bywater@knightfrank.com

**Knight Frank Esher**

47 High St, Esher KT10 9RL

**knightfrank.co.uk**



Your partners in property

---

1. Particulars: These particulars are not an offer or contract, nor part of one. You should not rely on statements given by Knight Frank in the particulars, by word of mouth or in writing ("information") as being factually accurate about the property, its condition or its value. Neither Knight Frank nor any joint agent has any authority to make any representations about the property, and accordingly any information given is entirely without responsibility on the part of Knight Frank. 2. Material Information: Please note that the material information is provided to Knight Frank by third parties and is provided here as a guide only. While Knight Frank has taken steps to verify this information, we advise you to confirm the details of any such material information prior to any offer being submitted. If we are informed of changes to this information by the seller or another third party, we will use reasonable endeavours to update this as soon as practical. 3. Photos, Videos etc: The photographs, property videos and virtual viewings etc. show only certain parts of the property as they appeared at the time they were taken. Areas, measurements and distances given are approximate only. 4. Regulations etc: Any reference to alterations to, or use of, any part of the property does not mean that any necessary planning, building regulations or other consent has been obtained. A buyer must find out by inspection or in other ways that these matters have been properly dealt with and that all information is correct. 5. Fixtures and fittings: A list of the fitted carpets, curtains, light fittings and other items fixed to the property which are included in the sale (or may be available by separate negotiation) will be provided by the Seller's Solicitors. 6. VAT: The VAT position relating to the property may change without notice. 7. To find out how we process Personal Data, please refer to our Group Privacy Statement and other notices at <https://www.knightfrank.com/legals/privacy-statement>.

Particulars dated July 2026. Photographs and videos dated June 2026. All information is correct at the time of going to print. Knight Frank is the trading name of Knight Frank LLP. Knight Frank LLP is a limited liability partnership registered in England and Wales with registered number OC305934. Our registered office is at 55 Baker Street, London W1U 8AN. We use the term 'partner' to refer to a member of Knight Frank LLP, or an employee or consultant. A list of members names of Knight Frank LLP may be inspected at our registered office. If you do not want us to contact you further about our services then please contact us by either calling 020 3544 0692, email to [marketing.help@knightfrank.com](mailto:marketing.help@knightfrank.com) or post to our UK Residential Marketing Manager at our registered office (above) providing your name and address.

