



PORTAL WAY, W3

£2,250 pcm

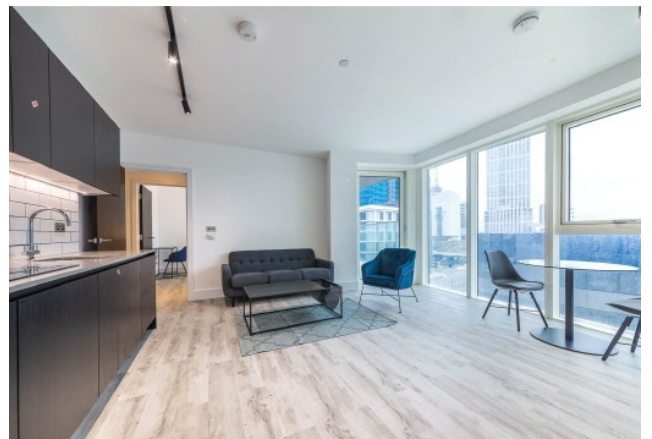
Situated on the upper floor of a landmark tower, this 569 sq/ft one-bedroom apartment delivers sophisticated urban living with floor-to-ceiling windows that flood the open-plan layout with natural light. The interior features a premier granite-top kitchen with integrated appliances, wide-paneled oak flooring, energy-efficient underfloor heating, built-in mirrored

- Modern One Bed Layout
- Private Glass Balcony
- Fully Equipped Gym & Yoga Suite
- 24-Hour Concierge & Keyless Entry
- Pet-Friendly with Dog Day Care



ABOUT THE HOME

Situated in the iconic One West Point development in North Acton, this pet-friendly building offers a 24-hour concierge, a residents' gym, a yoga/wellbeing suite, and extensive co-working spaces. Enjoy ultimate convenience with local supermarkets, restaurants, and Costa Coffee on your doorstep, plus quick walks to both North Acton (Central Line) and Acton Main Line (Elizabeth Line) stations.





LiFE RESIDENTIAL

203 Trentham Court, Victoria
Road, London, W3 6BT
Sales: 020 3668 1112
Lettings: 020 3668 1111

Energy Rating: B. We aim to make our particulars both accurate and reliable. However they are not guaranteed; nor do they form part of an offer or contract. If you require clarification on any points then please contact us, especially if you're traveling some distance to view. Please note that appliances and heating systems have not been tested and therefore no warranties can be given as to their good working order.