



Shenley Road, SE5

£650,000

This stylish and contemporary ground floor Victorian conversion with private rear garden enjoys a convenient location as well as benefiting from a range of period features. Sold with a share of freehold.

Shenley Road is a quiet residential street situated within easy reach of Camberwell Green, which offers an eclectic selection of restaurants, bars and cafés. Brunswick Park and Ruskin Park offer green open spaces, with frequent rail links from Denmark Hill Station with its regular services to London Victoria and London Blackfriars.

Features

- Ground Floor Period Conversion
- 753 Square Foot
- Two Double Bedrooms
- Private Garden
- Sought After Street
- Share Of Freehold

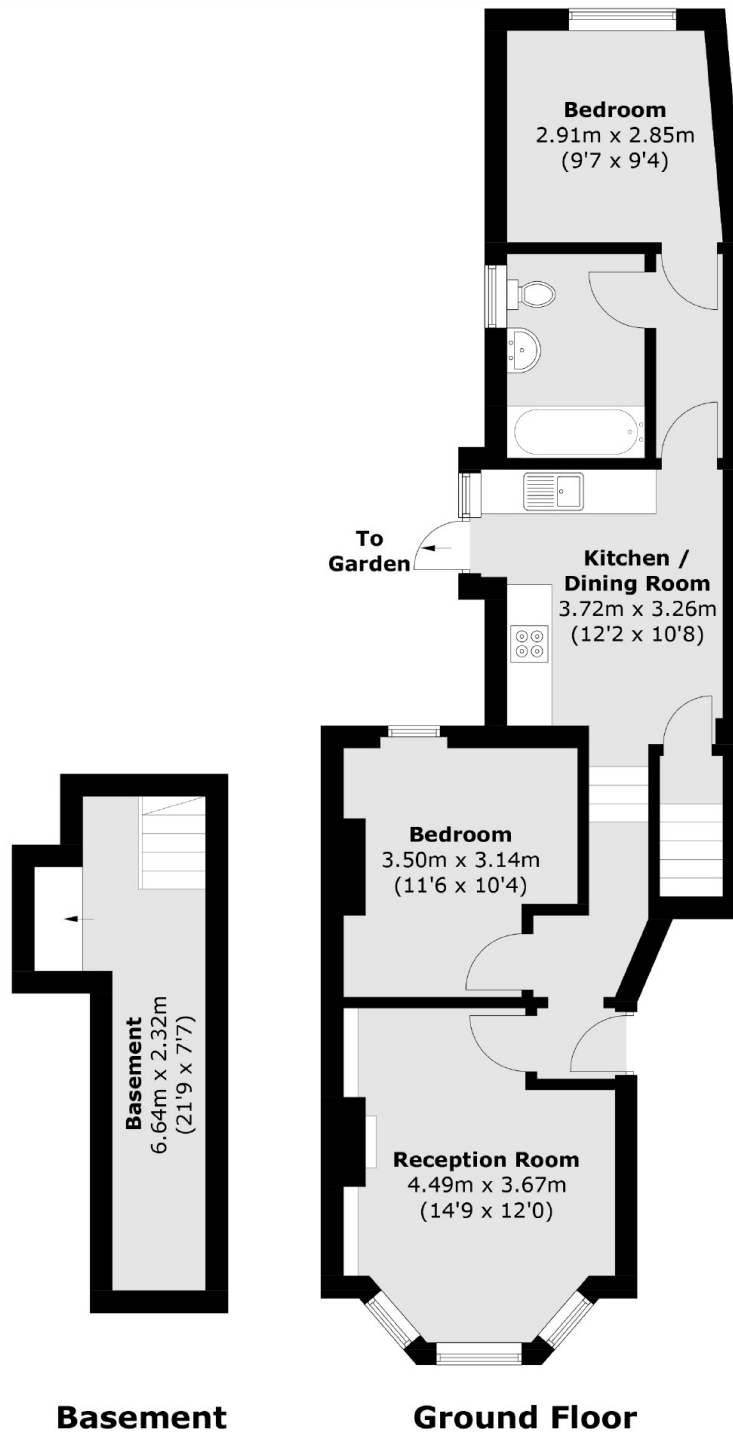


Shenley Road, SE5

Recently renovated and well maintained throughout the property has impressive proportions, including two good-size bedrooms, a modern eat-in kitchen leading out to a lawned rear garden and a bright front reception room with high ceilings, large bay window and attractive fireplace.



Shenley Road,
London, SE5



Total area (approx.): 70.0 sq. m (753.3 sq. ft)