

ANTHONY JAMES MANSER

Residential Sales & Lettings



Bassett Gardens

Isleworth, TW7 4QY

£850,000 Price Guide

Freehold

Council Tax Band E

Anthony James Manser are most pleased to present this impressive 1930's built home to the market. Set in an enviable residential location, in the cul-de-sac section of Bassett Gardens. The accommodation is both spacious and well planned. On the ground floor an entrance hallway, connecting reception rooms and modern kitchen with built in oven, hob and extractor. The rear reception overlooks a beautiful garden exceptionally well presented and planted. At the end of the garden is a summer house, ideal as a studio or work from home office. The first floor provides three bedrooms, two doubles and a good sized single. There is a tiled bathroom with walk in shower. This home is just a short walk to Osterley tube which is on the Piccadilly line. Osterley Park and gardens is easily accessed via Jersey Road. We highly recommend this home.

- Set in a Much Requested Residential Location
- An Impressive 1930's built Semi Detached House with Shared Driveway
- Spacious and Neutrally Decorated Reception Rooms
- Modern Kitchen with Fitted Oven, Hob & Extractor
- Three First Floor Bedrooms
- Tiled Bathroom with Walk in Shower
- Beautiful Rectangular Shaped Rear Garden
- Shared Drive to Garage
- Lovely Summer House, an Ideal Studio
- Walkable Distance to Osterley Tube and Osterley Park and Gardens

Viewing

Please contact our Sales Office on 020 8847 0488 if you wish to arrange a viewing appointment for this property or require further information.



3



2

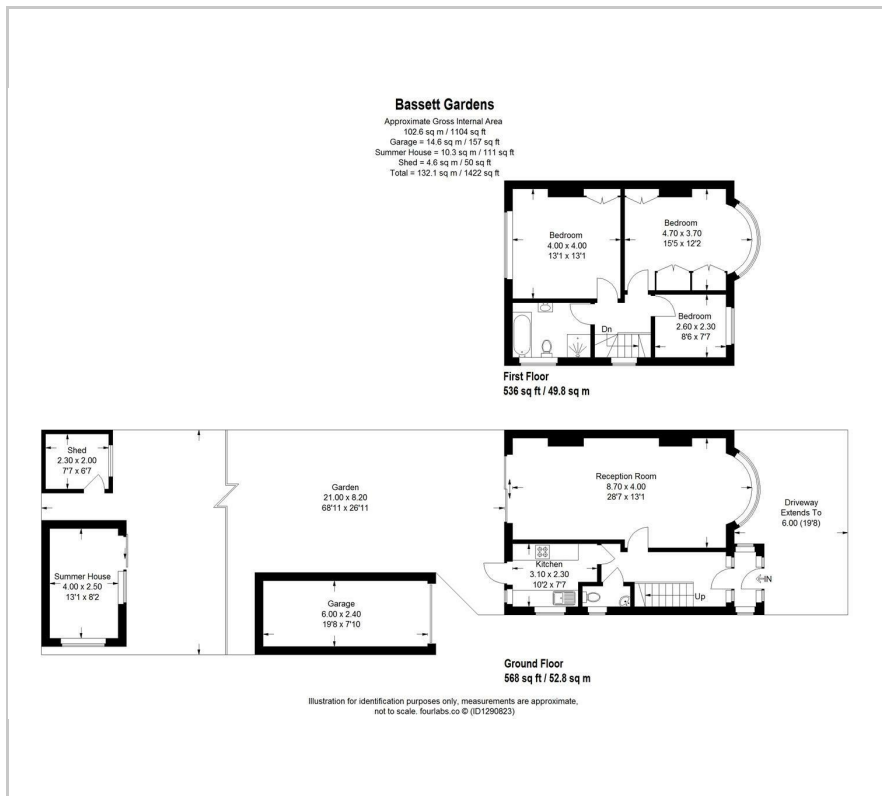


1

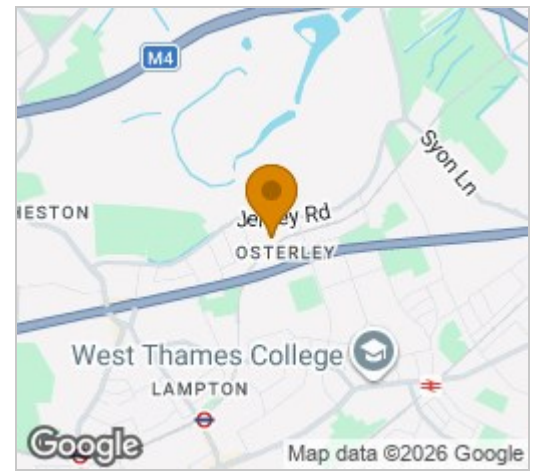


D

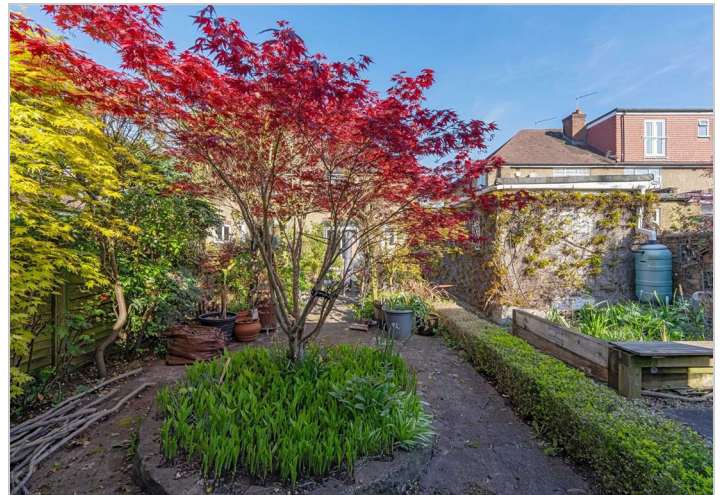
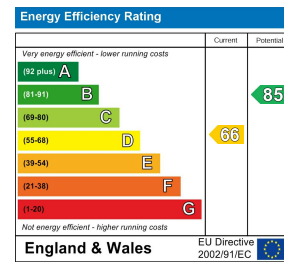
Floor Plan



Area Map



Energy Efficiency Graph



These particulars, whilst believed to be accurate are set out as a general outline only for guidance and do not constitute any part of an offer or contract. Intending purchasers should not rely on them as statements of representation of fact, but must satisfy themselves by inspection or otherwise as to their accuracy. No person in this firm's employment has the authority to make or give any representation or warranty in respect of the property.