



# COLDHARBOUR LANE, SW9

£500,000

Two Bedrooms  
Two Bathrooms  
Large Private Garden  
Off Street Parking  
Chain Free  
Energy Rating: C

@marshandparsons  
marshandparsons.co.uk

MARSH &  
PARSONS

# ABOUT THE PROPERTY

A generous ground floor garden maisonette spanning 715 sqft and boasting an impressive private lawned garden with off-street parking.

Featuring it's own front door, two double bedrooms, two bathrooms (one en-suite), a spacious living room with ample space for dining and entertaining alongside a well-equipped kitchen with ample storage and direct access to a second patio area.

Situated in the heart of Brixton close to the vast array of independent shops, cafes, bars and restaurants of central Brixton alongside the excellent transport links into central

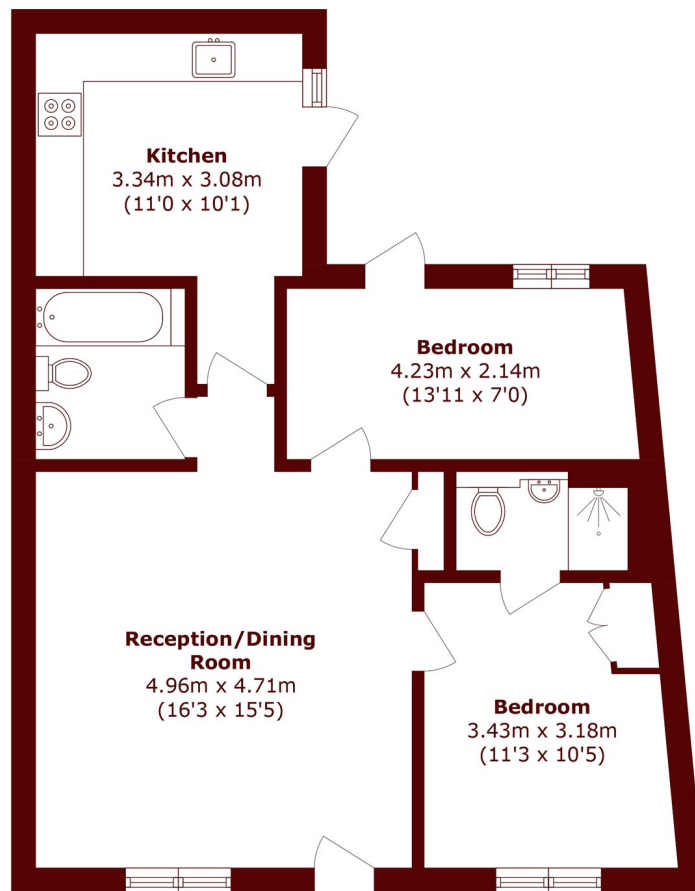








# STEP INSIDE COLDHARBOUR LANE



Total area (approx.): 66.4 sq. m (714.7 sq. ft)

**Brixton**  
020 7733 4595

Energy Rating: C We aim to make our particulars both accurate and reliable. However, they are not guaranteed; nor do they form part of an offer or contract. If you require clarification on any points then please contact us, especially if you're traveling some distance to view. Please note that appliances and heating systems have not been tested and therefore no warranties can be given as to their good working order

**MARSH &  
PARSONS**