

1 Viaduct Gardens London

This furnished one bedroom apartment is set within the sought after Embassy Gardens development. Situated a short walk to the River Thames. Residents can benefit from excellent transport links from Nine Elms Northern Line tube and Vauxhall station. On site communal facilities include a 24 hour concierge, indoor and outdoor swimming pools, residents gym, business lounge with meeting rooms and private cinema.

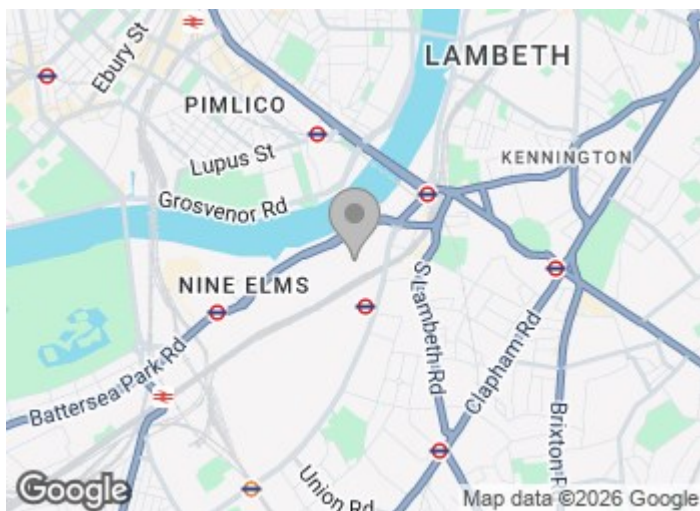
Residents can take advantage of the exciting communal amenities including the wonderful Sky Pool, Sky Deck and Orangery restaurant as well as the gym, spa and private cinema. The development is located close to zone one transport links including Vauxhall station.

£800 Per Week

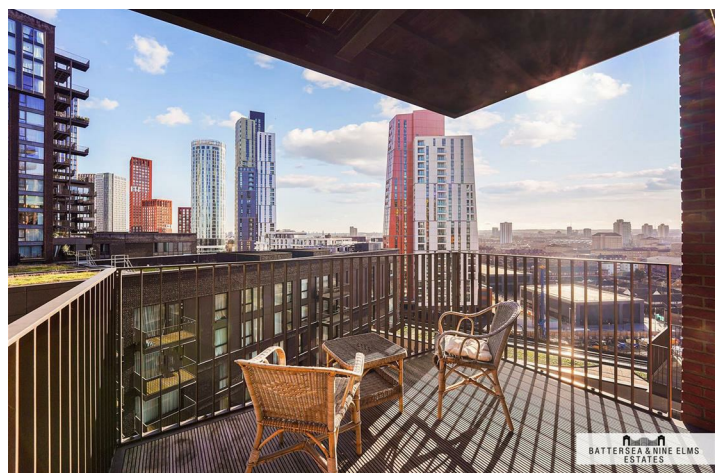
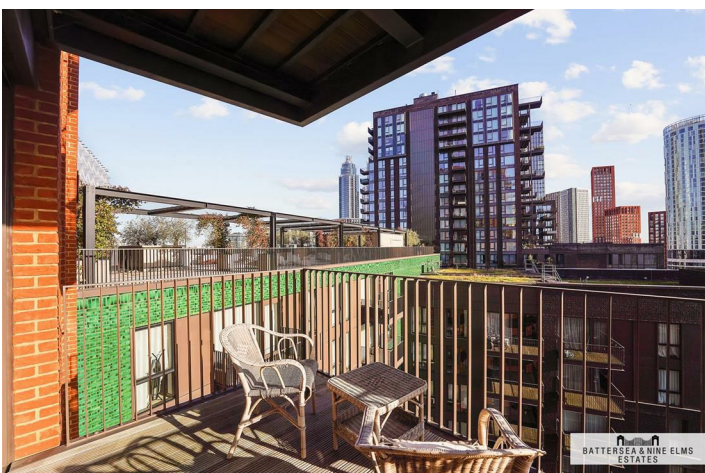
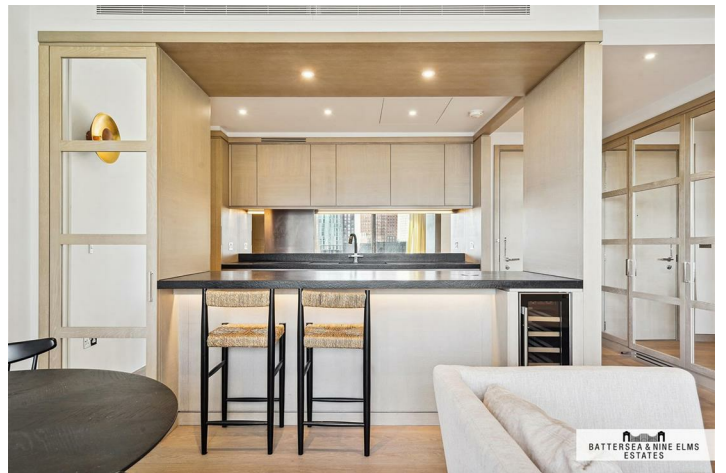
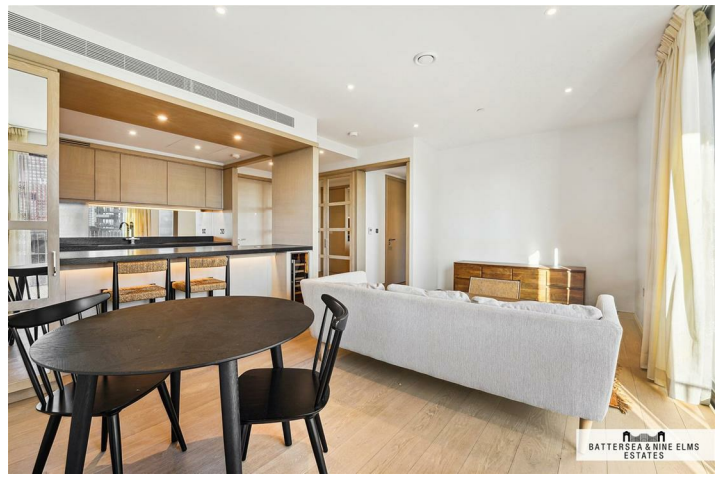
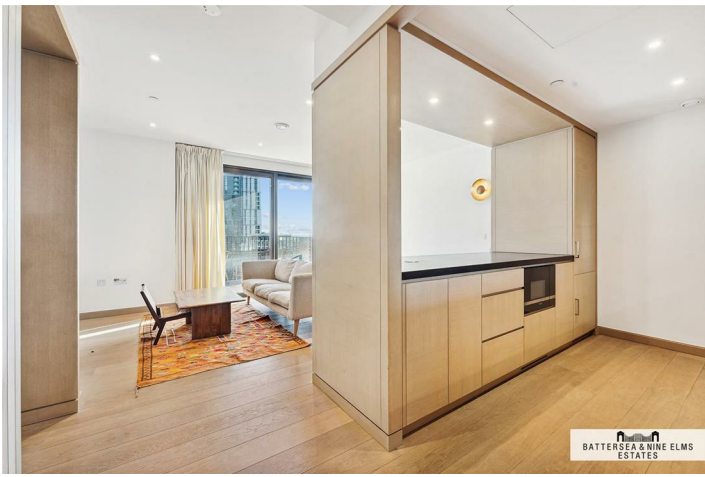
1 Viaduct Gardens London



- One double bedroom
- Underfloor heating & comfort cooling
- 24 Hour concierge
- Swimming pool & gym
- Furnished
- Private Balcony



[Directions](#)



Legacy Building,
Viaduct Gardens, SW11
Approximate Gross Internal Area
56.5 sq m / 608 sq ft



ILLUSTRATION FOR IDENTIFICATION PURPOSES ONLY
ALL MEASUREMENTS AND AREA FIGURES SUPPLIED BY OTHERS, ACCURACY IS NOT GUARANTEED.
THIS PLAN MUST NOT BE REPRODUCED BY ANY OTHER PERSON WITHOUT PERMISSION

These particulars, whilst believed to be accurate are set out as a general outline only for guidance and do not constitute any part of an offer or contract. Intending purchasers should not rely on them as statements of representation of fact, but must satisfy themselves by inspection or otherwise as to their accuracy. No person in this firm's employment has the authority to make or give any representation or warranty in respect of the property.

