



4 Andrews Buildings
Stanwell Road
Penarth CF64 2AA

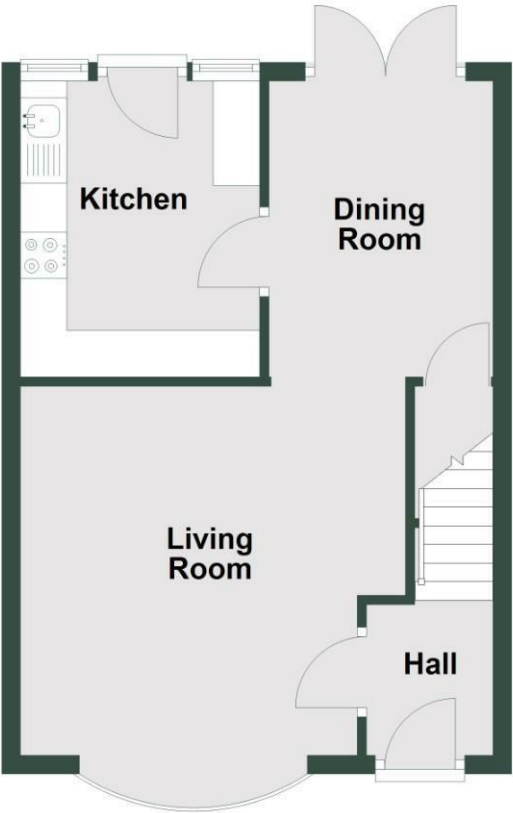
All enquiries: 029 2070 7999
Sales and general enquiries: info@shepherdsharp.com
Lettings enquiries: lettings@shepherdsharp.com

Monday – Friday
9am – 5.30pm
Saturday
9am – 5pm

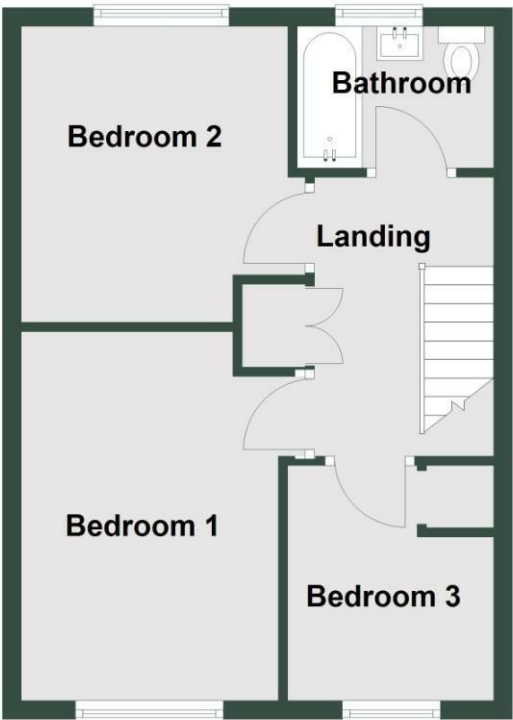
SHEPHERD SHARPE



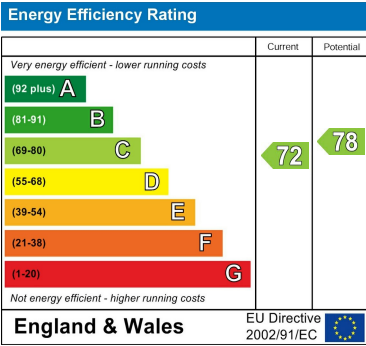
Ground Floor



First Floor



Total area: approx. 74.3 sq. metres (800.1 sq. feet)
9 Vennwood Close



9 Vennwood Close

Wenvoe CF5 6BZ

Offers In Excess Of
£320,000

A well presented and upgraded pretty three bedroom end link house situated in a quiet cul-de-sac. The property has a good sized front garden and surprisingly large rear garden. The property is found in the village of Wenvoe with local shop, primary school, post office, pub, easy access to M4, Cardiff, Penarth and Sully. Comprises hallway, lounge, dining room, kitchen, two double bedrooms, one single bedroom and modern bathroom. Front garden, good size rear garden, garage in a separate block (first from the left as you look at the block). Gas central heating, uPVC double glazing. Freehold. NO FORWARD CHAIN.



Modern composite front door leading to hallway.

Hallway

High quality pale grey laminate floor, matwell, radiator, fuse box, alarm control panel, downlighting, decorated in white. Part glazed panelled door to lounge.

Lounge

13'1" x 13'5" (4.0m x 4.10m)

An attractive well presented living room. uPVC double glazed window to front. Pale grey laminate floor, attractive decoration, downlighting, pre-wired for wall TV, radiator. Wide opening through to open plan dining area.

Dining Room

9'8" x 8'2" (2.95m x 2.49m)

uPVC double glazed French doors to rear garden. Pale grey laminate flooring, useful downstairs store cupboard, downlighting, radiator.

Kitchen

10'4" x 7'7" (3.17m x 2.32m)

An attractive fitted kitchen, white high gloss units with stainless steel door furniture, contrast worktop, composite sink with lever mixer tap. Electric hob, split level oven, combination microwave, integrated fridge/freezer and 450 dishwasher. Space for tumble dryer and washing machine, attractive flooring and tiling. uPVC double glazed door and windows looking out onto the rear garden.

First Floor Landing

Well presented, carpet, modern downlighting, loft access with retractable ladder (fully boarded loft and access to combination boiler), large store cupboard. Painted moulded panelled doors to all first floor rooms.

Bedroom 1

13'5" (max) x 9'2" (4.09m (max) x 2.80m)

A lovely double bedroom with recess for large fitted wardrobe. uPVC double glazed window to front. Carpet, decorated in white, coved, downlighting, radiator.

Bedroom 2

10'2" x 9'4" (3.10m x 2.85m)

A second double bedroom. uPVC double glazed window to rear. Decorated in white, carpet, radiator, recess for wardrobe.

Bedroom 3

7'2" x 5'8" (2.19m x 1.75m)

A single bedroom. uPVC double glazed to front. Pale decoration, downlighting, carpet, radiator.

Bathroom

Attractively finished and tiled. Comprising modern panelled bath with toughened shower screen, rainfall chrome shower fitting with sliding attachment, modern wash basin with built-in furniture and storage beneath, twin flush wc. Mirror cabinet, tiled floor, chrome ladder radiator, modern downlighting.

Front Garden

The property is set well back from the cul-de-sac with lawned frontage and pathway.



Rear Garden

A surprisingly large rear garden with gated side access, outside water supply and power. There is a large full width terrace immediately outside the kitchen, pathway to full width rear terrace/play area/space for outdoor kitchen/BBQ, new store shed, mainly lawn, attractive trees and maturity at rear beyond the property boundary.

Council Tax

Band E £2,519.60 p.a. (25/26)

Post Code

CF5 6BZ

