



Connells

Westminster Drive
Bletchley Milton Keynes

Westminster Drive Bletchley Milton Keynes MK3 6LX

for sale
£290,000



Property Description

Offered to market with no onward chain is this three-bedroom semi-detached property located in the highly sought after area of 'West Bletchley'. This property comprises entrance hall, lounge/diner and kitchen all on the ground floor. To the first floor there are three well-proportioned bedrooms, a bathroom and a separate WC.

Westminster Drive is located in West Bletchley and offers ample access to numerous local amenities such as schools and shops as well as transport links including Bletchley train station, numerous bus stops and also the M1 and A5 road networks.

Entrance Hall

Wall mounted radiator and built-in storage downstairs.

Lounge/Diner

22' 3" x 13' 5" (6.78m x 4.09m)

A generously sized lounge/diner benefitting from double-glazed window to front aspect, sliding door to rear aspect and two wall mounted radiators.

Kitchen

11' 3" x 10' 4" (3.43m x 3.15m)

A range of wall and base level units. Double-glazed window to rear aspect. Space for a cooker, washing machine, undercounter fridge and undercounter freezer. Stainless steel sink and drainer.

First Floor

Landing

Rise from entrance hall. Double-glazed window to side aspect and access to the loft.

Bedroom One

11' 5" x 11' 2" Maximum (3.48m x 3.40m Maximum)

A double-bedroom benefitting from wall

mounted radiator, double-glazed window to front aspect and built-in cupboard.

Bedroom Two

10' 10" Plus door recess x 10' 5" (3.30m Plus door recess x 3.17m)

Double-glazed window to rear aspect, wall mounted radiator and two built-in cupboards.

Bedroom Three

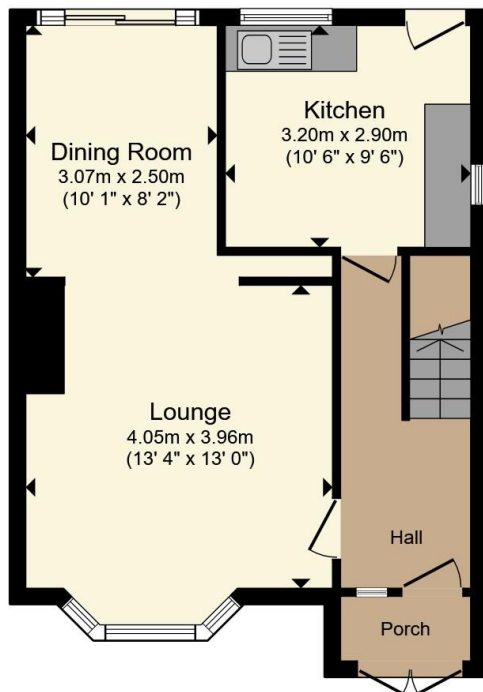
8' 4" x 8' 2" (2.54m x 2.49m)

Double-glazed window to front aspect, wall mounted radiator and built-in cupboard.

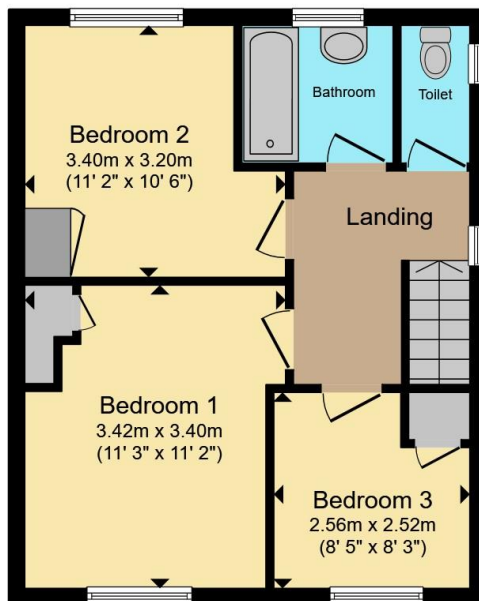
Bathroom

Bath with an attached shower, pedestal wash hand basin and separate WC. Two wall mounted radiators. Double glazed opaque windows to side aspect and rear aspect.





Ground Floor

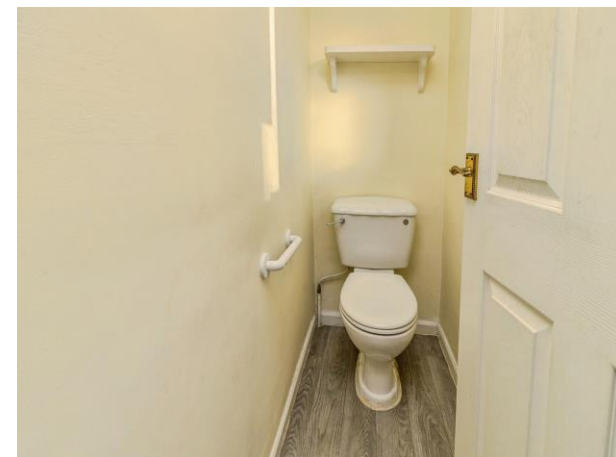


First Floor

Total floor area 87.7 m² (944 sq.ft.) approx

This floor plan is for illustrative purposes only. It is not drawn to scale. Any measurements, floor areas (including any total floor area), openings and orientation are approximate. No details are guaranteed, they cannot be relied upon for any purpose and they do not form part of any agreement. No liability is taken for any error, omission or misstatement. A party must rely upon its own inspection(s). Powered by www.propertybox.io

Connells



To view this property please contact Connells on

T 01908 375 241
E bletchley@connells.co.uk

188 Queensway Bletchley
MILTON KEYNES MK2 2SW

EPC Rating: D Council Tax
Band: C

view this property online connells.co.uk/Property/BLE311765

Tenure: Freehold



1. MONEY LAUNDERING REGULATIONS Intending purchasers will be asked to produce identification documentation at a later stage and we would ask for your co-operation in order that there will be no delay in agreeing the sale. 2. These particulars do not constitute part or all of an offer or contract. 3. The measurements indicated are supplied for guidance only and as such must be considered incorrect. Potential buyers are advised to recheck measurements before committing to any expense. 4. We have not tested any apparatus, equipment, fixtures, fittings or services and it is in the buyers interest to check the working condition of any appliances.

Connells Residential is registered in England and Wales under company number 1489613, Registered Office is Cumbria House, 16-20 Hockliffe Street, Leighton Buzzard, Bedfordshire, LU7 1GN. VAT Registration Number is 500 2481 05.

See all our properties at www.connells.co.uk | www.rightmove.co.uk | www.zoopla.co.uk

Property Ref: BLE311765 - 0002