



£250,000
Church Drive
Sheffield, S36 7LZ

PROPERTY SUMMARY

A rare opportunity to purchase a home in one of Hoylandswaine's most sought-after developments, a short walk to a lovely village school. Owned by the same family since new, this well-presented three-bedroom semi-detached home occupies a tucked-away position within this exclusive village setting.

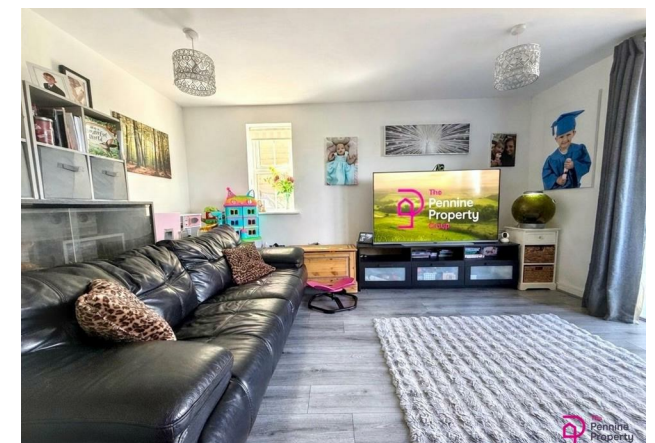
3



1



1

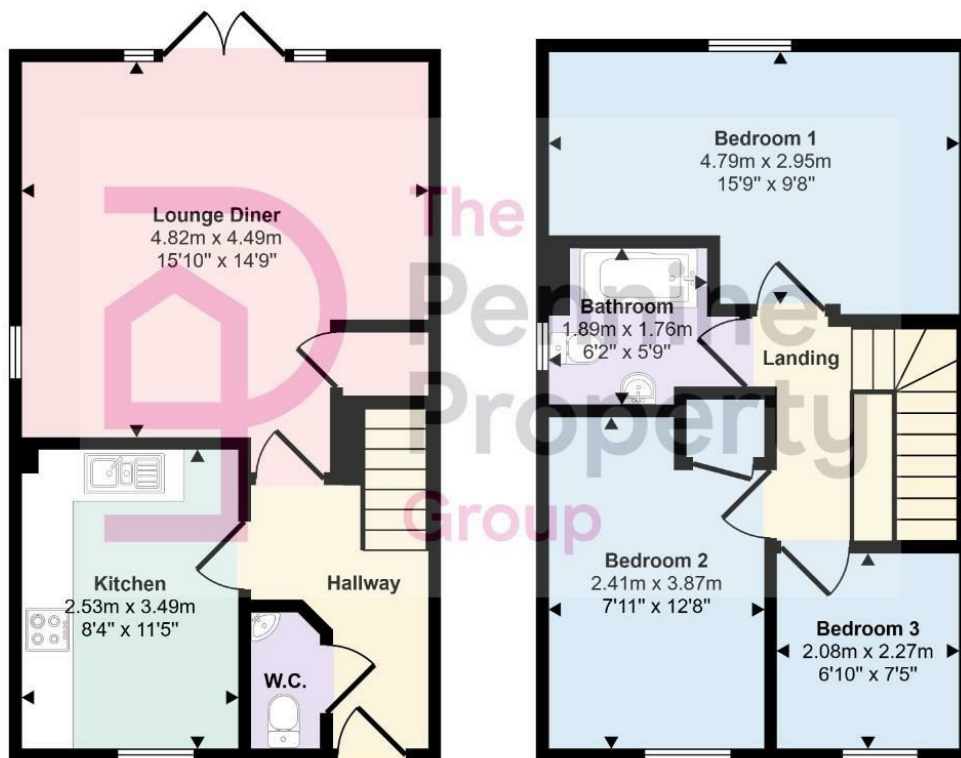








Approx Gross Internal Area
77 sq m / 829 sq ft



Ground Floor
Approx 39 sq m / 416 sq ft

First Floor
Approx 38 sq m / 413 sq ft

This floorplan is only for illustrative purposes and is not to scale. Measurements of rooms, doors, windows, and any items are approximate and no responsibility is taken for any error, omission or mis-statement. Icons of items such as bathroom suites are representations only and may not look like the real items. Made with Made Snappy 360.

LOCAL AUTHORITY
BMBC

TENURE
Freehold

COUNCIL TAX BAND
C

VIEWINGS
By prior appointment only

Energy Efficiency Rating		Current	Potential
Very energy efficient - lower running costs			
(82 plus) A			96
(81-81) B		83	
(69-80) C			
(55-68) D			
(39-54) E			
(21-38) F			
(1-20) G			
Not energy efficient - higher running costs			
England & Wales		EU Directive 2002/91/EC	

Agents Note: Whilst every care has been taken to prepare these particulars, they are for guidance purposes only. All measurements are approximate and are for general guidance purposes only and whilst every care has been taken to ensure their accuracy, they should not be relied upon and potential buyers/tenants are advised to recheck the measurements

OFFICE ADDRESS

12 St Marys Street
Penistone
Sheffield
South Yorkshire
S36 6DT

OFFICE DETAILS

01226 766755
info@pennineproperty.co.uk