



14 Maple Road, Ashted  
Ashted

**V&H**  
HOMES

£865,000

# 14 Maple Road

Ashted

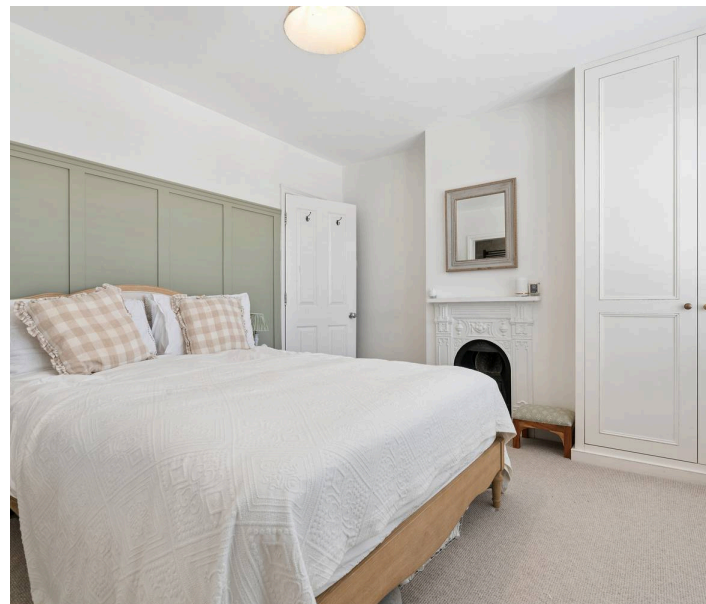
Council Tax band: F

Tenure: Freehold

EPC Energy Efficiency Rating: D

EPC Environmental Impact Rating: E

- Victorian Semi Detached House
- Tastefully Renovated by Current Owners
- Period Features Throughout
- Four Bedrooms
- Two Bathrooms
- Outbuilding with Gym & Office
- Private Road





V&H Homes are delighted to present this beautifully modernised Victorian residence, set within the highly sought-after Lanes area of Ashted.

Having been thoughtfully renovated to an exceptional standard, this impressive home blends period charm with contemporary design. Throughout, the property showcases high-quality finishes including Farrow & Ball tones, parquet flooring, bespoke fitted wardrobes and classic shutter blinds.

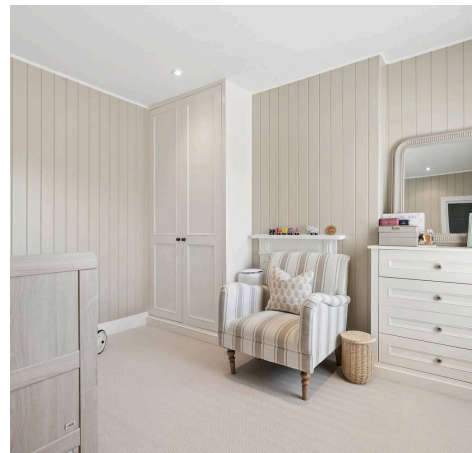
The ground floor offers bright, well-balanced accommodation ideal for both everyday living and entertaining. Two generous reception rooms provide versatile space, enhanced by two working fireplaces, including a cosy log burner. To the rear, a well-appointed kitchen offers excellent functionality with direct access to the garden.

Upstairs, the accommodation is arranged over two floors. The first floor provides well-proportioned bedrooms alongside a newly fitted, contemporary bathroom, while the loft has been expertly converted to create an impressive principal bedroom with useful eaves storage.

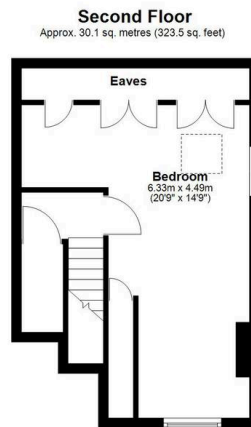
Externally, the property enjoys a substantial rear garden, perfect for outdoor dining and relaxation. A standout feature is the purpose-built outbuilding, currently arranged as a home office and gym, along with a built-in seating area ideal for entertaining. A recently installed boiler adds further peace of mind.

Further benefits include previously approved planning permission for a rear extension and potential to extend the existing bathroom, offering scope for future enhancement.

Ideally positioned close to Ashted Village and approximately 200 metres from St Peter's Primary School.



- Victorian Semi Detached House
- Tastefully Renovated by Current Owners
- Period Features Throughout



Total area: approx. 151.2 sq. metres (1627.4 sq. feet)

Disclaimer: Please note this floor plan is for marketing purposes and is to be used as a guide only. All efforts have been made to ensure its accuracy. Plan produced using PlanUp.