

Downend Road

FISHPONDS

APPROXIMATE FLOOR AREA
115 SQM / 1238 SQFT



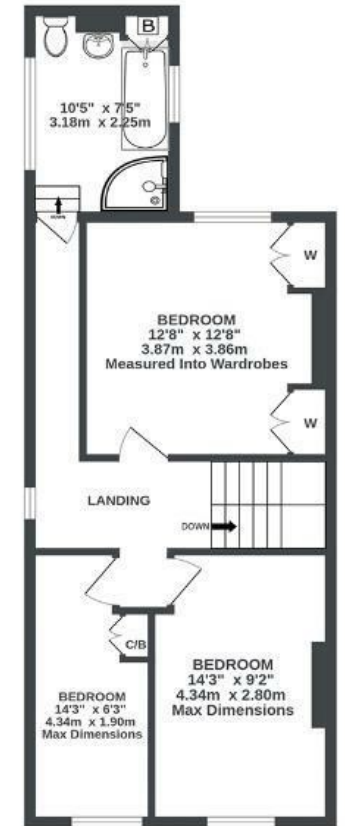
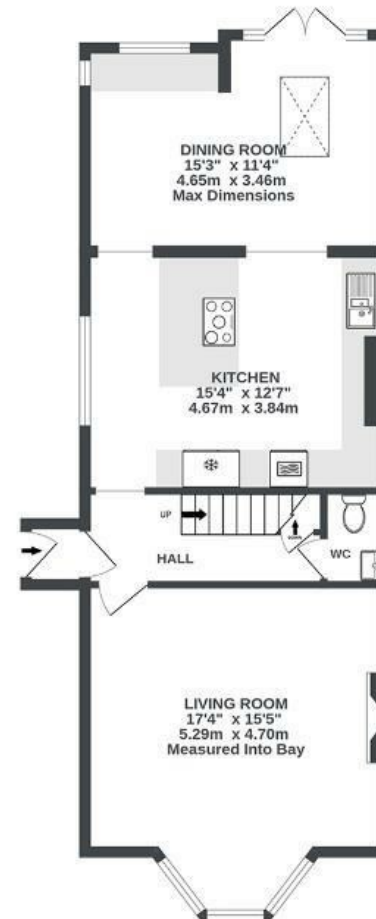
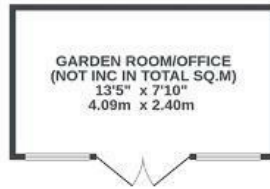
GROUND FLOOR
676 sq.ft. (62.8 sq.m.) approx.

1ST FLOOR
561 sq.ft. (52.2 sq.m.) approx.

GARAGE (NOT IN SITU)
0 sq.ft. (0.0 sq.m.) approx.

GARDEN ROOM (NOT IN SITU)
0 sq.ft. (0.0 sq.m.) approx.

CELLAR (UNDER KITCHEN)
0 sq.ft. (0.0 sq.m.) approx.



Illustrations are for reference purposes only, measurements are approximate, not to scale.

Boardwalk

Downend Road

FISHPONDS, BRISTOL



£550,000



3 Bedrooms



BS16 5BD



1 Bathrooms

"The kitchen transformation has truly made it the heart of the home and the garden office has been a complete game changer."

