



Connells

Porters Close
Deanshanger Milton Keynes

Porters Close Deanshanger Milton Keynes MK19 6JW

for sale offers in excess of
£425,000



Property Description

****VIEWING IS ESSENTIAL TO APPRECIATE THIS PROPERTY**** The kitchen is the heart of the home and this is a real showstopper! The large island extends out from the wall with corian worksurface and molded sink giving a luxurious, high quality feel. Also featuring a breakfast bar, bi-fold doors leading to the garden and open plan living space, this family orientated home is made for entertaining and social living! The accommodation briefly comprises; entrance porch, hallway, lounge, kitchen/ diner, utility room and downstairs cloakroom. Upstairs, there are four great size bedrooms as well as a luxurious bathroom. Externally, the front of the property offers access to the single garage as well as off-street parking for multiple cars. The rear garden is a great size and nicely landscaped with a patio and decking area just off the kitchen with stairs and flowerbeds leading to a lawned section at the top of the garden.

Deanshanger is a village situated between Milton Keynes and Buckingham, with easy access to the A422 and A5. The village features a doctor's surgery, library, a community centre, and a village hall. A primary school and a high school are additional advantages. A parish church, a Methodist chapel, a post office, a bar, and two members' clubs are all nearby. A community centre has stores like a pharmacy, hair salon, takeout, and newsagents. On the High Street, there is a Co-operative Food Store and bus stops with routes to Milton Keynes City and surrounding localities.

Entrance Porch

Wood flooring. Double glazed window to front. Spotlights.

Entrance Hall

Wood flooring. Radiator. Stairs to first floor.

Cloakroom

Close coupled w.c., pedestal wash hand basin. Double glazed obscure window to rear aspect.

Kitchen / Diner / Living room

23' x 15' 9" (7.01m x 4.80m)

Fitted wall and base units with complimentary marble work surface inset marble sink and drainer. Integrated fridge/freezer and dishwasher. Integrated microwave and electric oven. Induction hob. Breakfast bar. Wood flooring. Bi-fold doors to rear aspect. Open to lounge with Radiator. Double glazed window to front aspect.

Utility Room

9' 2" x 5' 3" (2.79m x 1.60m)

Fitted wall and base units with complimentary work surface. Space for washing machine and tumble drier. Radiator. Wood flooring. Double glazed window to rear aspect.

First Floor Landing

Doors to all rooms.

Bedroom 1

9' 10" x 21' 8" (3.00m x 6.60m)

L Shaped room. Fitted Windows, Laminate flooring. Two double glazed window to front.

Bedroom 2

11' 10" x 9' 2" (3.61m x 2.79m)

Wood flooring. Radiator. Double glazed window to front aspect.

Bedroom 3

11' 2" x 9' 2" (3.40m x 2.79m)

Laminate flooring. Radiator. Double glazed window to rear aspect.

Bedroom 4

9' 10" x 9' 10" (3.00m x 3.00m)

Laminate flooring. Radiator. Double glazed window to rear aspect.

Bathroom

Marble bath with porcelain inside. Close coupled w.c., pedestal wash hand basin. Fully tiled. Double glazed obscure window to rear aspect.

Outside

Rear Garden

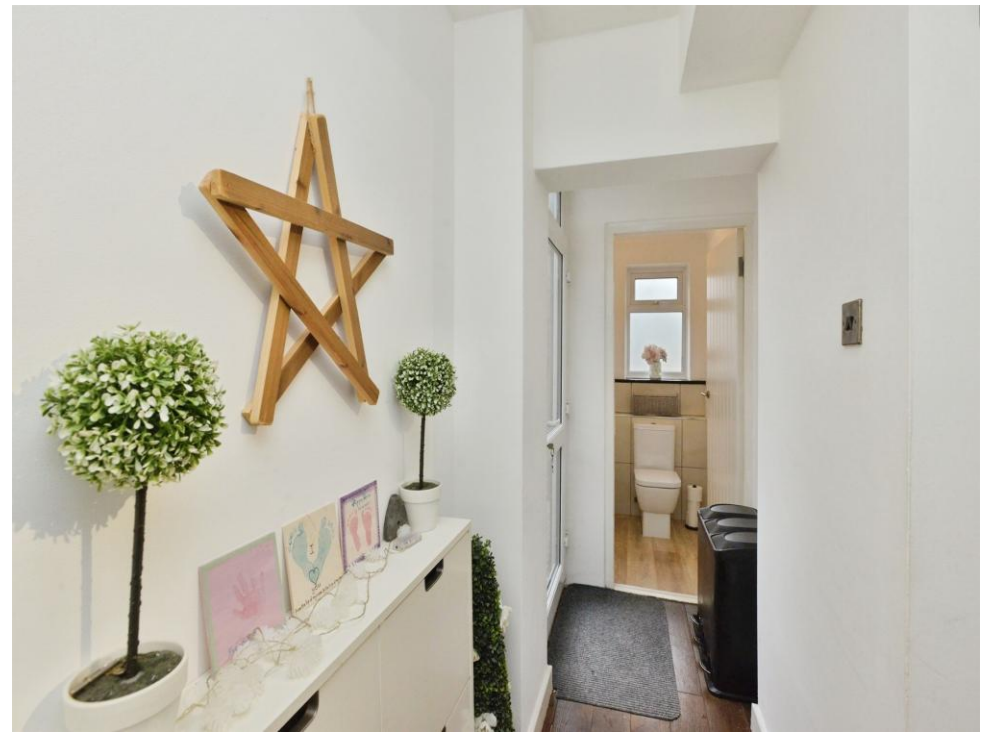
Mainly laid to lawn. Patio. Rear gate.

Garage

19' 2" x 10' 4" (5.84m x 3.15m)

Manual up and over door. Power and light.







To view this property please contact Connells on

T 01908 563 993
E stonystratford@connells.co.uk

82 High Street Stony Stratford
MILTON KEYNES MK11 1AH

EPC Rating: C Council Tax
Band: C

Tenure: Freehold

[check out more properties at connells.co.uk](http://connells.co.uk)



1. MONEY LAUNDERING REGULATIONS Intending purchasers will be asked to produce identification documentation at a later stage and we would ask for your co-operation in order that there will be no delay in agreeing the sale. 2. These particulars do not constitute part or all of an offer or contract. 3. The measurements indicated are supplied for guidance only and as such must be considered incorrect. Potential buyers are advised to recheck measurements before committing to any expense. 4. We have not tested any apparatus, equipment, fixtures, fittings or services and it is in the buyers interest to check the working condition of any appliances.

Connells Residential is registered in England and Wales under company number 1489613, Registered Office is Cumbria House, 16-20 Hockliffe Street, Leighton Buzzard, Bedfordshire, LU7 1GN. VAT Registration Number is 500 2481 05.

See all our properties at www.connells.co.uk | www.rightmove.co.uk | www.zoopla.co.uk

Property Ref: SSD307288 - 0011