

42 School Green Lane

North Weald, Epping

Council Tax band: D

Tenure: Freehold

- Four bedroom home
- Ensuite shower room
- Driveway
- Opportunity to add own stamp
- Scope to extend (STP)
- Spacious garden



Hallway

WC

Living Room

23' 7" x 11' 10" (7.20m x 3.60m)

Kitchen

23' 0" x 8' 6" (7.00m x 2.60m)

Reception

20' 0" x 10' 10" (6.10m x 3.30m)

Bedroom

19' 4" x 10' 10" (5.90m x 3.30m)

Ensuite shower room

6' 7" x 5' 3" (2.00m x 1.60m)

Bedroom

14' 5" x 12' 2" (4.40m x 3.70m)

Bedroom

12' 2" x 10' 10" (3.70m x 3.30m)

Bedroom

9' 6" x 7' 7" (2.90m x 2.30m)

Bathroom

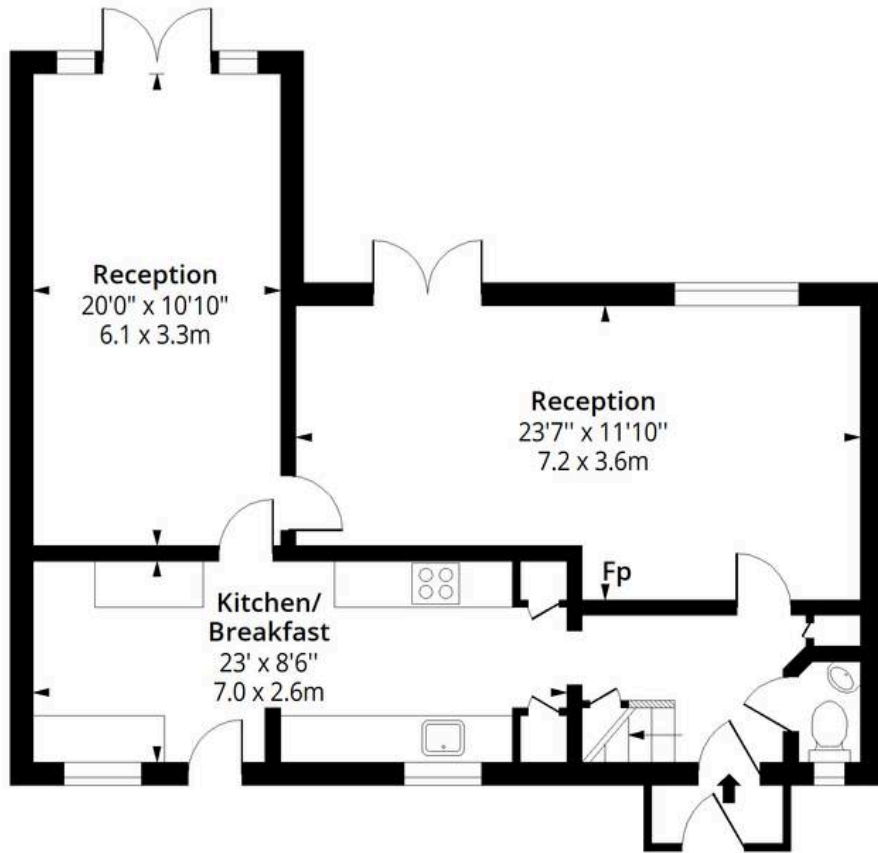
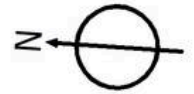
9' 2" x 5' 7" (2.80m x 1.70m)





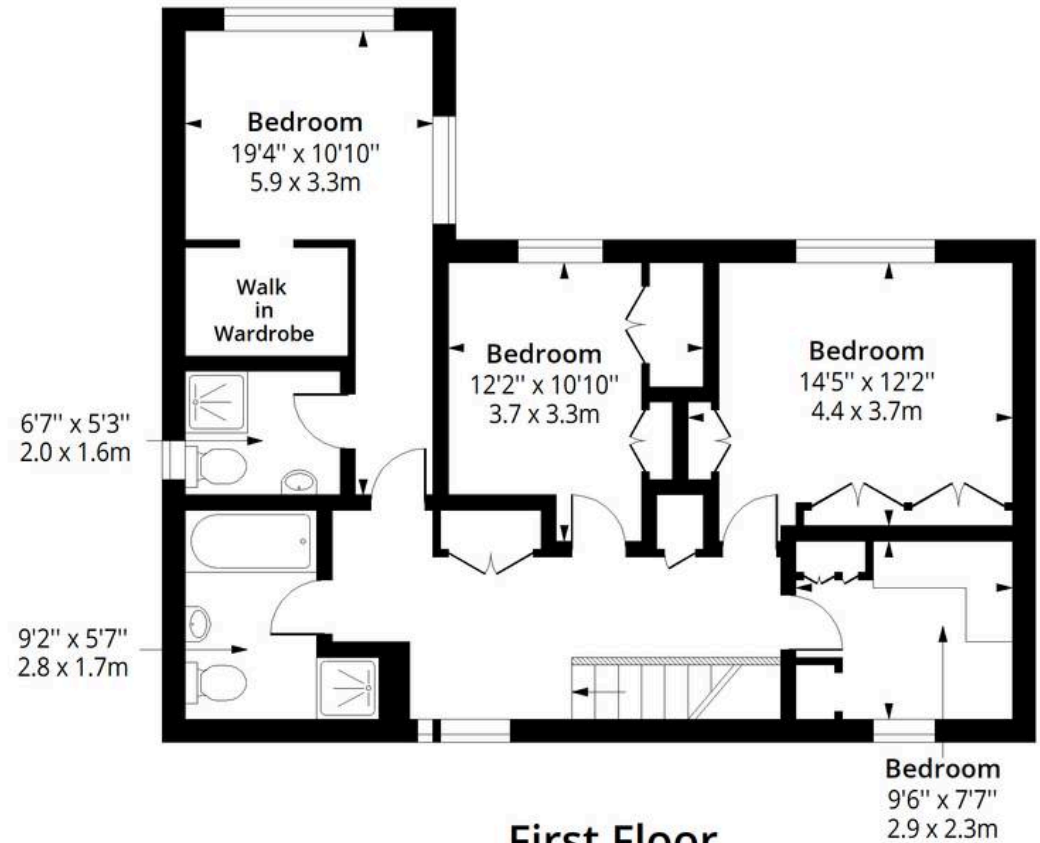
School Green Lane CM16

Approx. Gross Internal Area 1566 Sq Ft - 145.48 Sq M



Ground Floor

Floor Area 783 Sq Ft - 72.74 Sq M



First Floor

Floor Area 783 Sq Ft - 72.74 Sq M



Measured according to RICS IPMS2. Floor plan is for illustrative purposes only and is not to scale. Every attempt has been made to ensure the accuracy of the floor plan shown, however all measurements, fixtures, fittings and data shown are an approximate interpretation for illustrative purposes only. 1 sq m = 10.76 sq feet.

Date: 2/7/2026