



COOMBE LANE, SW20

£1,500,000

Four bedroom detached house
Two bathrooms
Potential to further extend
South west facing garden
Off-street parking
Energy rating: d

@marshandparsons
marshandparsons.co.uk

MARSH &
PARSONS

ABOUT THE PROPERTY

Located in a sought after residential area, this impressive four bedroom detached family home offers 1,587 sq ft of beautifully presented accommodation. Significantly extended, the property combines generous living space with the potential to extend further to the rear and into the loft (STPP), all complemented by off-street parking, a garage and a south west facing garden backing onto open playing fields.

The property is ideally positioned within walking distance of Raynes Park station, local shops, excellent schools and open spaces, with Wimbledon town, village and transport links easily accessible.







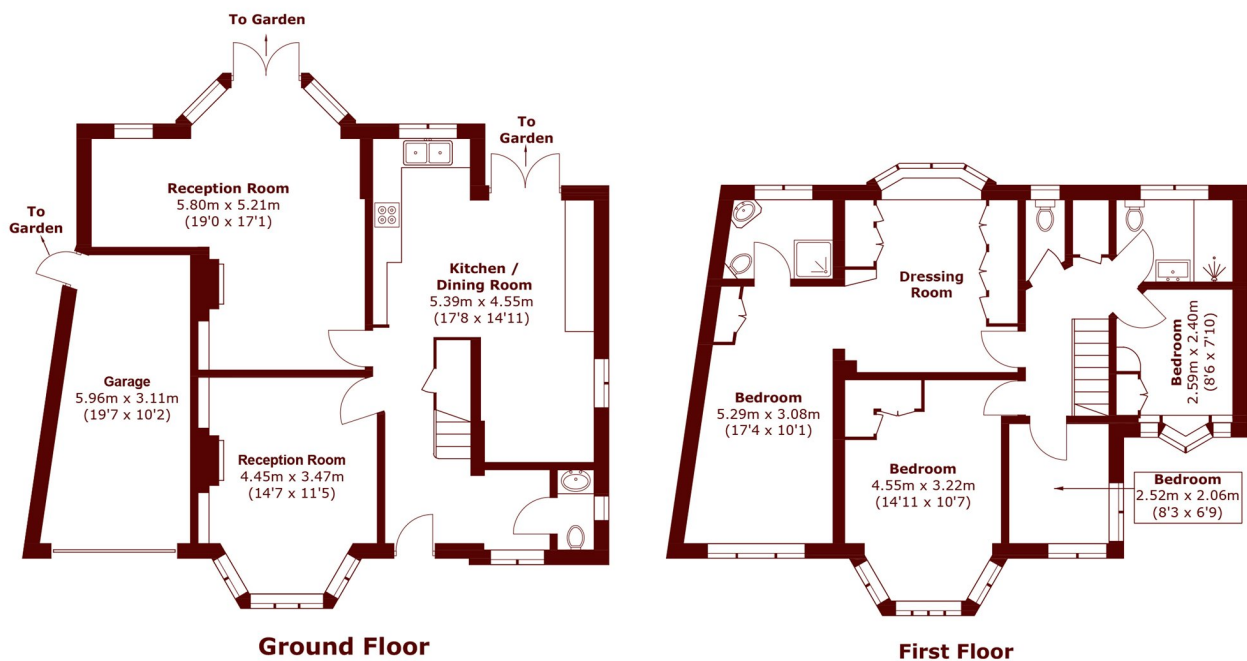
FURTHER DETAILS

The house provides bright, versatile accommodation arranged over two floors, including two spacious reception rooms, a well-equipped kitchen/diner with garden access, and a guest WC. Upstairs are four well-proportioned bedrooms and a family shower room, with the extended principal bedroom benefiting from a large dressing room and en suite shower room.

Externally, The sunny south west facing garden is secluded and has a lovely stone-tiled patio, plus side access from the front for bikes/gardening etc.



STEP INSIDE COOMBE LANE



Approx Internal Area: 147.5 sq. m (1,587.6 sq. ft)
Garage: 15.9 sq. m (171.1 sq. ft)
Total: 163.4 sq. m (1,758.7 sq. ft)

Wimbledon
020 8879 6660

Energy Rating: D We aim to make our particulars both accurate and reliable. However, they are not guaranteed; nor do they form part of an offer or contract. If you require clarification on any points then please contact us, especially if you're traveling some distance to view. Please note that appliances and heating systems have not been tested and therefore no warranties can be given as to their good working order

MARSH &
PARSONS