

Bartram Road, SE4 £1,325 PCM

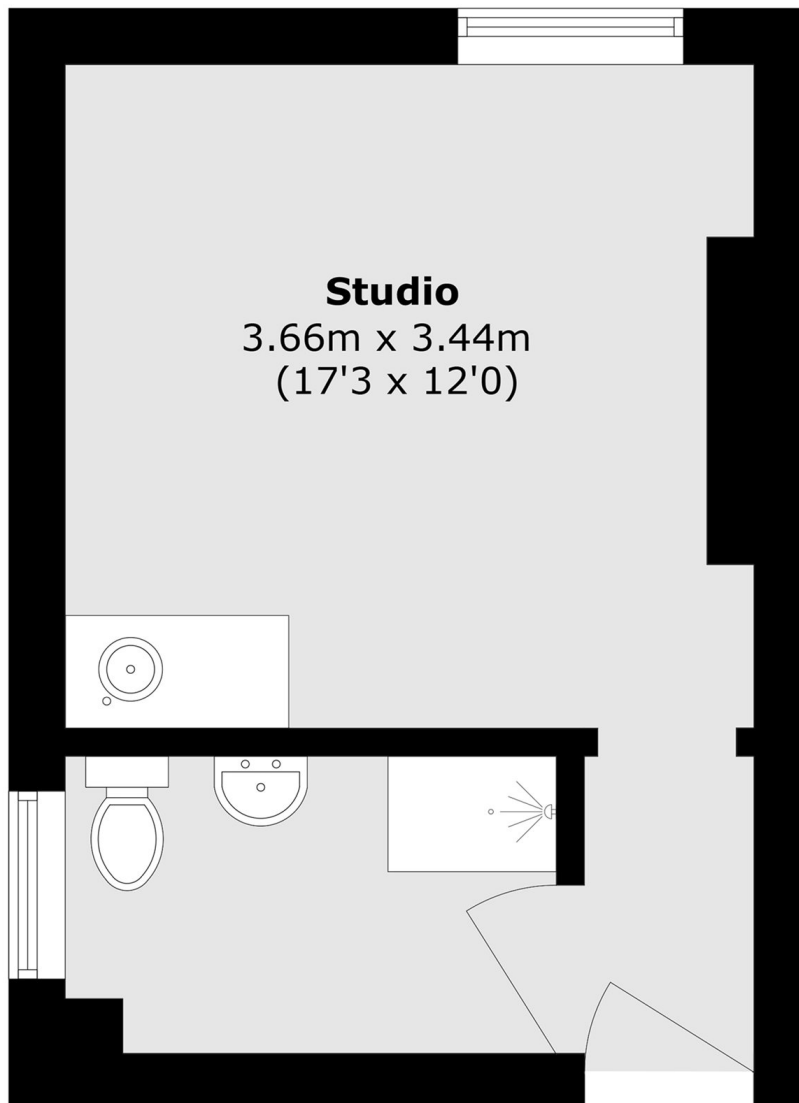
A well presented studio apartment with all utilities included. Located on the first floor of a well-maintained building, this smart studio offers an abundance of natural light throughout. The property features a generously sized bedroom area and a modern bathroom.

Bartram Road is a 0.3 miles away from Crofton Park station with trains from Crofton Park on the Thameslink and Southeastern network, with regular services to London Blackfriars and via central London onto the Thameslink core.

Features

- Studio Flat
- All Utilities Included
- Self Contained
- Modern Bathroom
- On Street Parking
- Close To Transport Links

Bartram Road,
London, SE4



Total area (approx.): 19.61 sq. m (200.3 sq. ft)

Dexters

Lewisham
228 Algernon Road
London
SE13 7AG
Sales
020 8690 8888

Energy Rating: D. We aim to make our particulars both accurate and reliable. However they are not guaranteed; nor do they form part of an offer or contract. If you require clarification on any points then please contact us, especially if you're traveling some distance to view. Please note that appliances and heating systems have not been tested and therefore no warranties can be given as to their good working order.

 **RICS** | Regulated
Estate Agent
and Letting Agent

dexters.co.uk