



157 Rickman Hill, Coulsdon - CR5 3DU

Guide Price £675,000





157 Rickman Hill

Coulsdon, Coulsdon

A beautifully presented 4 bedroom detached family home blending modern style with timeless charm. The property boasts an array of accommodation including 3 reception rooms, modern fitted kitchen, downstairs wc and principal bedroom with en-suite. There is an enclosed rear garden and to the front there is a driveway providing ample parking. There is no onward chain.

Council Tax band: F

Tenure: Freehold

EPC Energy Efficiency Rating: C

EPC Environmental Impact Rating:

- Detached Family Home
- 4 Double Bedrooms
- Principal Bedroom with En-Suite
- Two Reception Rooms
- Study/3rd Reception
- Downstairs WC
- Level Rear Garden
- Borders of Chipstead and Over-Looking Recreation Ground



Living Room

Dining Room

Kitchen

Entrance Hall

Bedrooms

Bathrooms



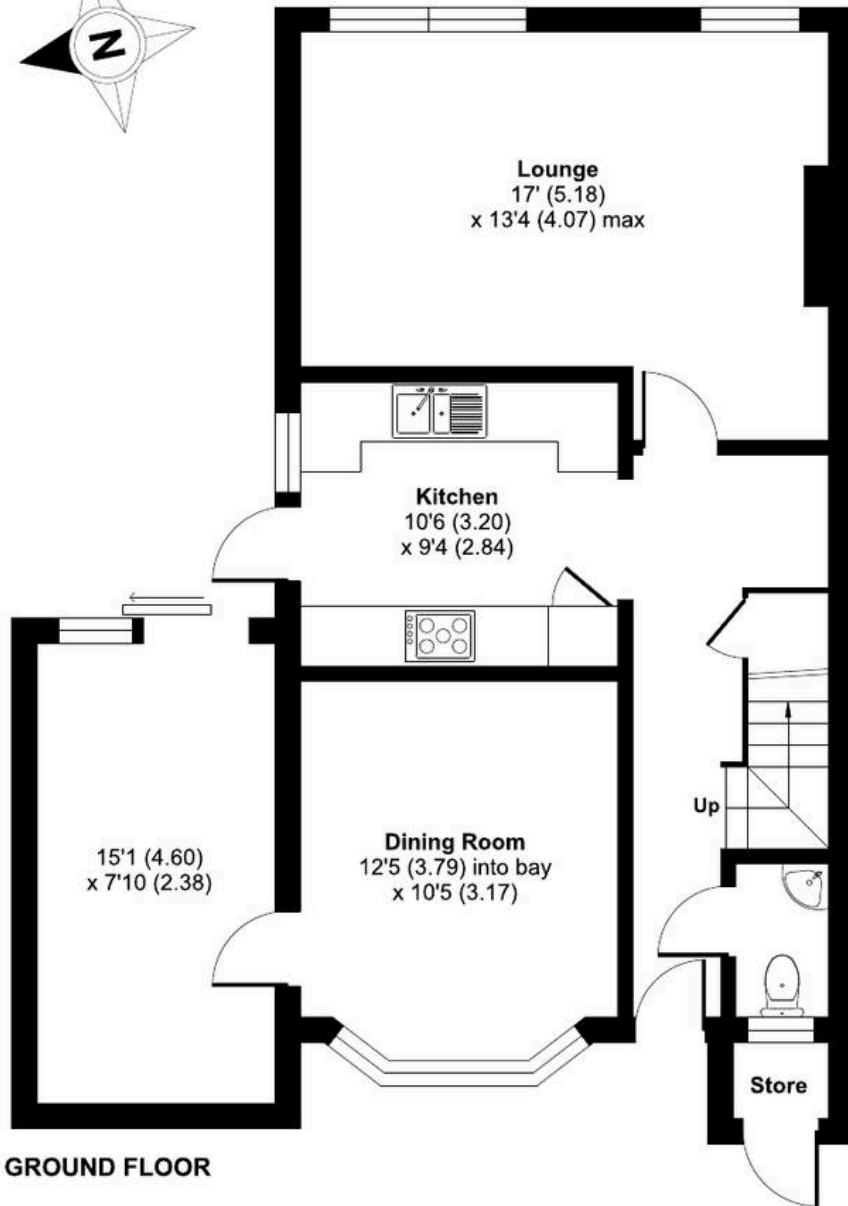
Rickman Hill, Coulsdon, CR5

Approximate Area = 1255 sq ft / 116.5 sq m

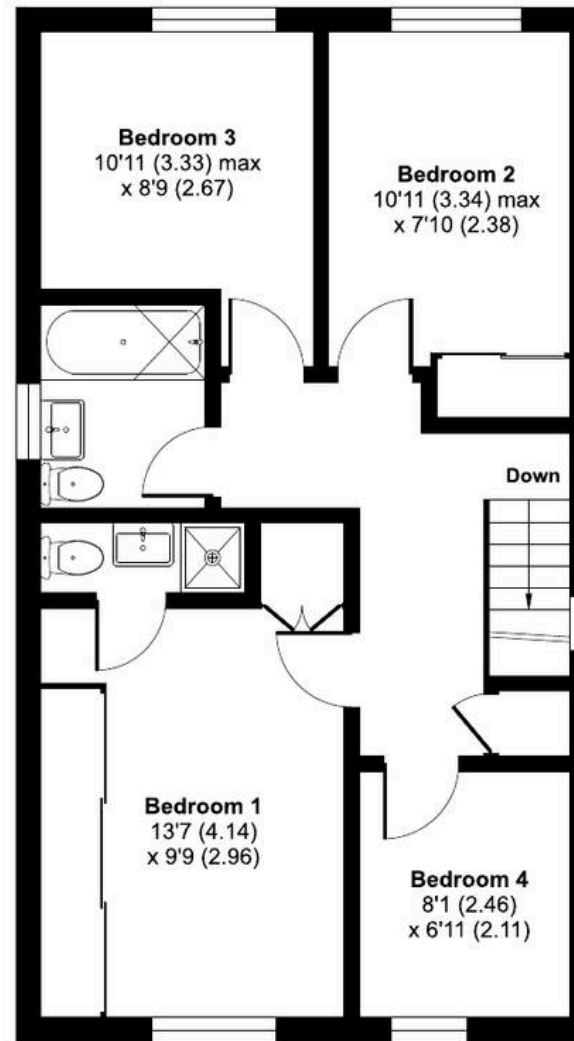
Outbuildings = 100 sq ft / 9.2 sq m

Total = 1355 sq ft / 125.7 sq m

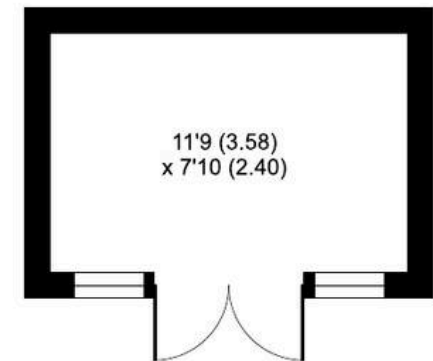
For identification only - Not to scale



GROUND FLOOR



FIRST FLOOR



OUTBUILDING



Park & Bailey Coulsdon

150 Brighton Road, Coulsdon - CR5 2YY

020 8763 8060 • coulsdon@parkandbailey.co.uk • www.parkandbailey.co.uk/