



## Marylebone Street, W1G

£3,900 Per calendar month

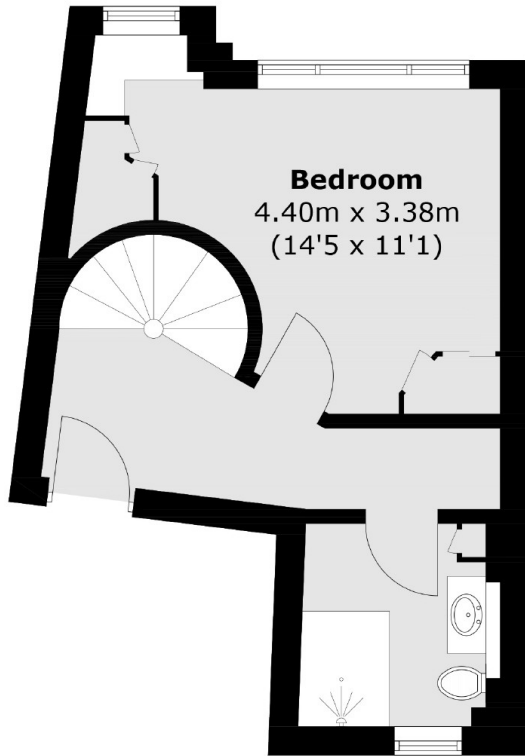
This charming one bedroom duplex flat is located in the heart of Marylebone Village. Set on the third and fourth floor offering spacious accommodation and an abundance of natural light.

Marylebone High Street is famous for its boutique shops, bars and restaurants. Oxford Street, Mayfair and neighbouring Fitzrovia are all nearby, as well as the open spaces of Regent's Park. Bond Street, Oxford Street and Baker Street stations are close by.

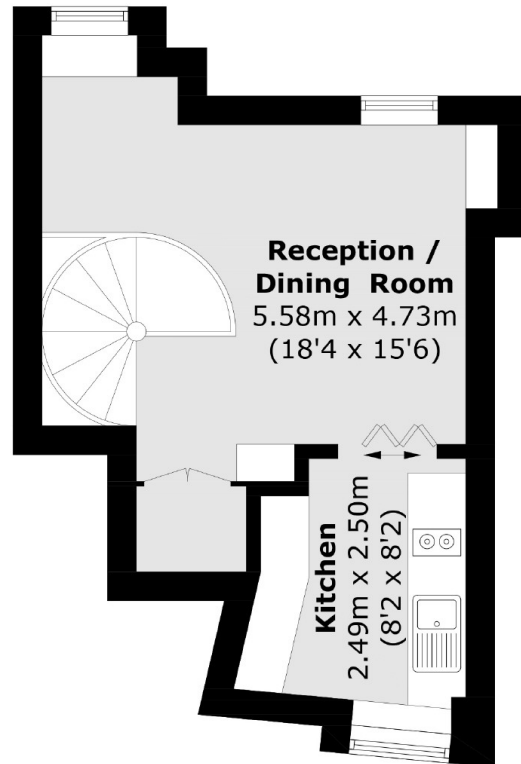
### Features

Marylebone Village  
Duplex Apartment  
One Bedroom  
Shower Room  
Separate Kitchen

# Marylebone Street, London, W1G



**Third Floor**



**Fourth Floor**

Total area (approx.): 48.4 sq. m (521.0 sq. ft)