



ULLSWATER CRESCENT, SW15

£7,800 per month

Five bedrooms
Three bathrooms
Modern interior
Large garden
Off-street parking
Energy rating: c

@marshandparsons
marshandparsons.co.uk

MARSH &
PARSONS

ABOUT THE PROPERTY

A spacious and luxurious detached house, offering over 2,830 sq ft of living space with a large garden.

This property benefits from high specification throughout with a large marble tiled double reception and a large open plan kitchen/dining room with tri-folding doors and bright skylights. The property offers five bedrooms, three bathrooms, large garden and off-street parking for two cars.

Positioned on Ullswater Crescent, the property benefits from nearby access to Richmond Park and Wimbledon Common, alongside the convenience of Kingston close at hand.

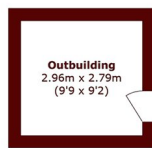




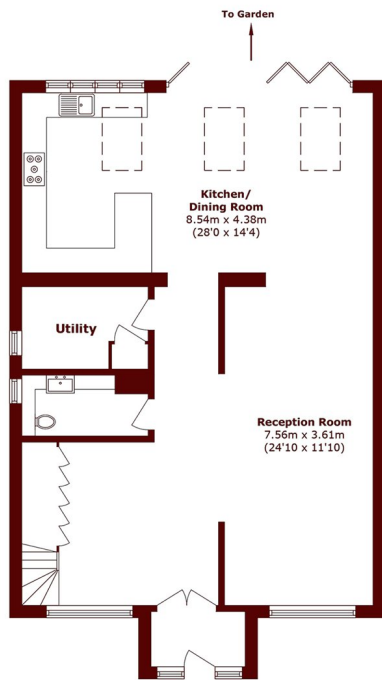




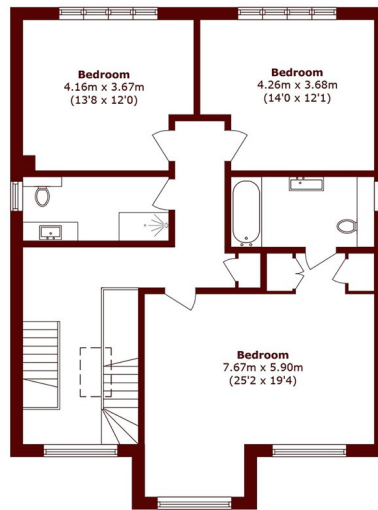
STEP INSIDE ULLSWATER CRESCENT



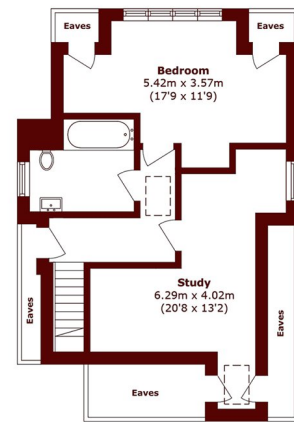
Ground Floor



Ground Floor



First Floor



Second Floor

Total area (approx.): 243.9 sq. m (2625.3 sq. ft)
(Excluding Eaves)

Outbuilding area (approx.): 8.2 sq. m (88.2 sq. ft)

Wimbledon
020 8879 6661

Energy Rating: C We aim to make our particulars both accurate and reliable. However, they are not guaranteed; nor do they form part of an offer or contract. If you require clarification on any points then please contact us, especially if you're traveling some distance to view. Please note that appliances and heating systems have not been tested and therefore no warranties can be given as to their good working order

MARSH &
PARSONS