

ALLDAY
& MILLER



Clivesdale Drive, Hayes, UB3 3PX
£380,000

1 1 1 c



Clivesdale Drive, Hayes, UB3 3PX

£380,000

- One Bedroom House
- Private Garden
- Close To Hayes Town Centre
- Extension Potential (STPP)
- Freehold
- Driveway & Allocated Parking Slot
- Easy Reach To Elizabeth Line Station
- Great Condition Throughout

Description

This well-presented one-bedroom end-of-terrace home is offered in excellent condition throughout.

The property has been fully refurbished, including re-plastering, a complete electrical rewire with a modern energy-efficient consumer unit, updated plumbing, a new boiler, and radiators fitted with individual controls. It also benefits from Hive smart heating and an integrated CCTV security system.

Internally, the accommodation comprises a separate living room and dining area, a fitted kitchen, and a three-piece bathroom suite. The bathroom includes underfloor heating, a Whirlpool jacuzzi bath, and a Bluetooth mirror cabinet. New flooring and carpets have been fitted throughout.

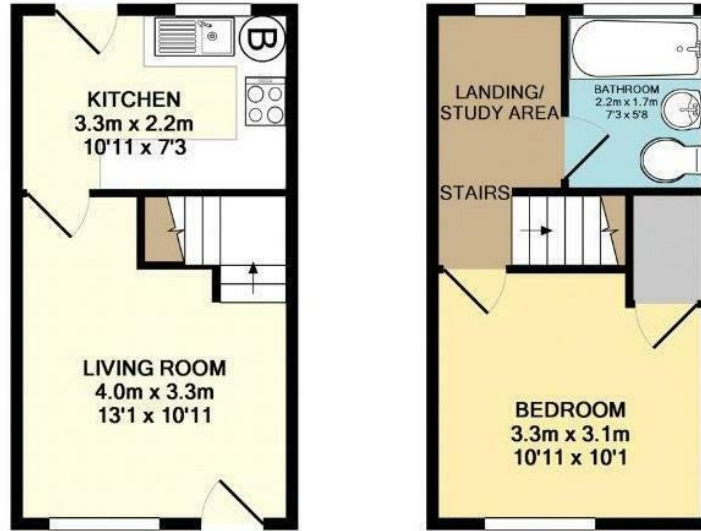
Externally, the property offers a private rear garden, a front driveway, and an allocated parking space.

Situation

Clivesdale Drive located in the heart of Hayes. The town centre just moments away with a variety of local cafes, coffee shops, Botwell leisure centre and supermarkets. Hayes and Harlington station is just a short drive away with the Elizabeth line giving easy links to central London and back towards Heathrow and Reading. Also benefits from being close to multiple bus links connecting you to all local areas such as Uxbridge, Northolt, Greenford, Heathrow, Ealing and Harrow The M25, M4 motorways are just a short drive away. A number of highly regarded schools in the local area including Minet Infant School and Harlington secondary school.



Floor Plans



GROUND FLOOR
APPROX. FLOOR
AREA 20.7 SQ.M.
(223 SQ.FT.)

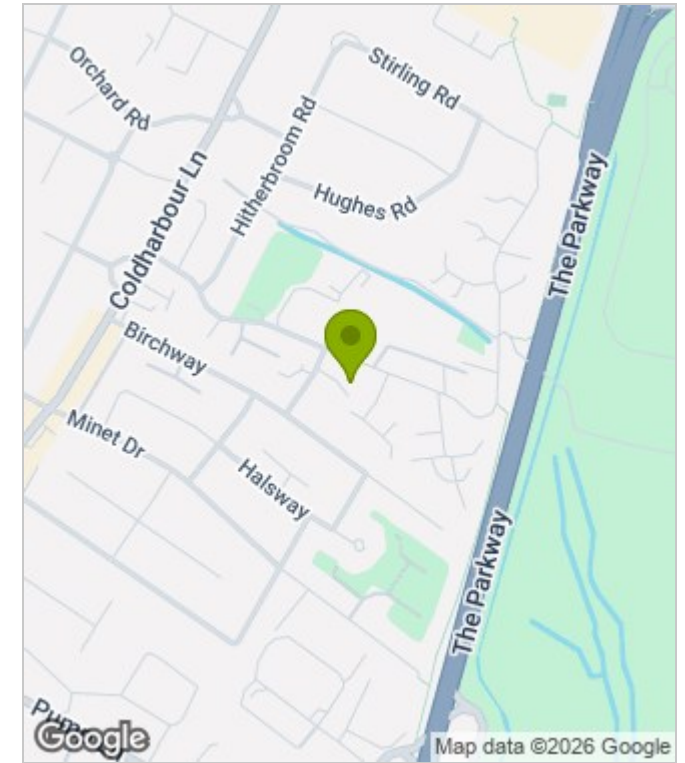
1ST FLOOR
APPROX. FLOOR
AREA 20.7 SQ.M.
(223 SQ.FT.)

TOTAL APPROX. FLOOR AREA 41.4 SQ.M. (446 SQ.FT.)

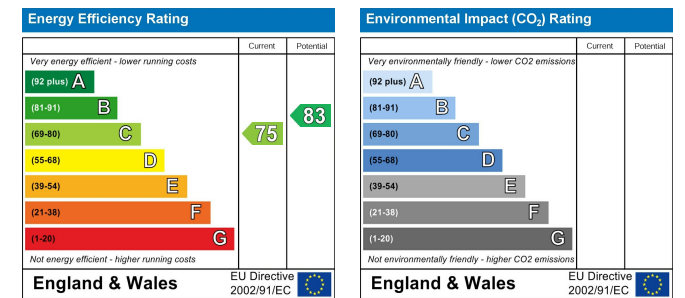
Whilst every attempt has been made to ensure the accuracy of the floor plan contained here, measurements of doors, windows, rooms and any other items are approximate and no responsibility is taken for any error, omission, or mis-statement. This plan is for illustrative purposes only and should be used as such by any prospective purchaser. The services, systems and appliances shown have not been tested and no guarantee as to their operability or efficiency can be given.

Made with Metropix ©2017

Area Map



Energy Performance Graph



These particulars, whilst believed to be accurate are set out as a general outline only for guidance and do not constitute any part of an offer or contract. Intending purchasers should not rely on them as statements of representation of fact, but must satisfy themselves by inspection or otherwise as to their accuracy. No person in this firm's employment has the authority to make or give any representation or warranty in respect of the property.