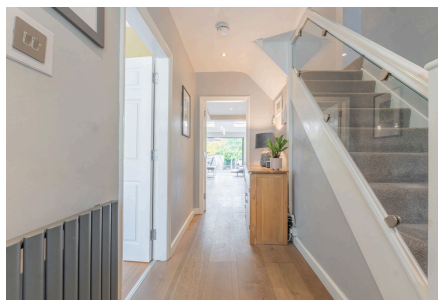


Greyfort Crescent, Solihull, B92 8DN

Offers Over £500,000

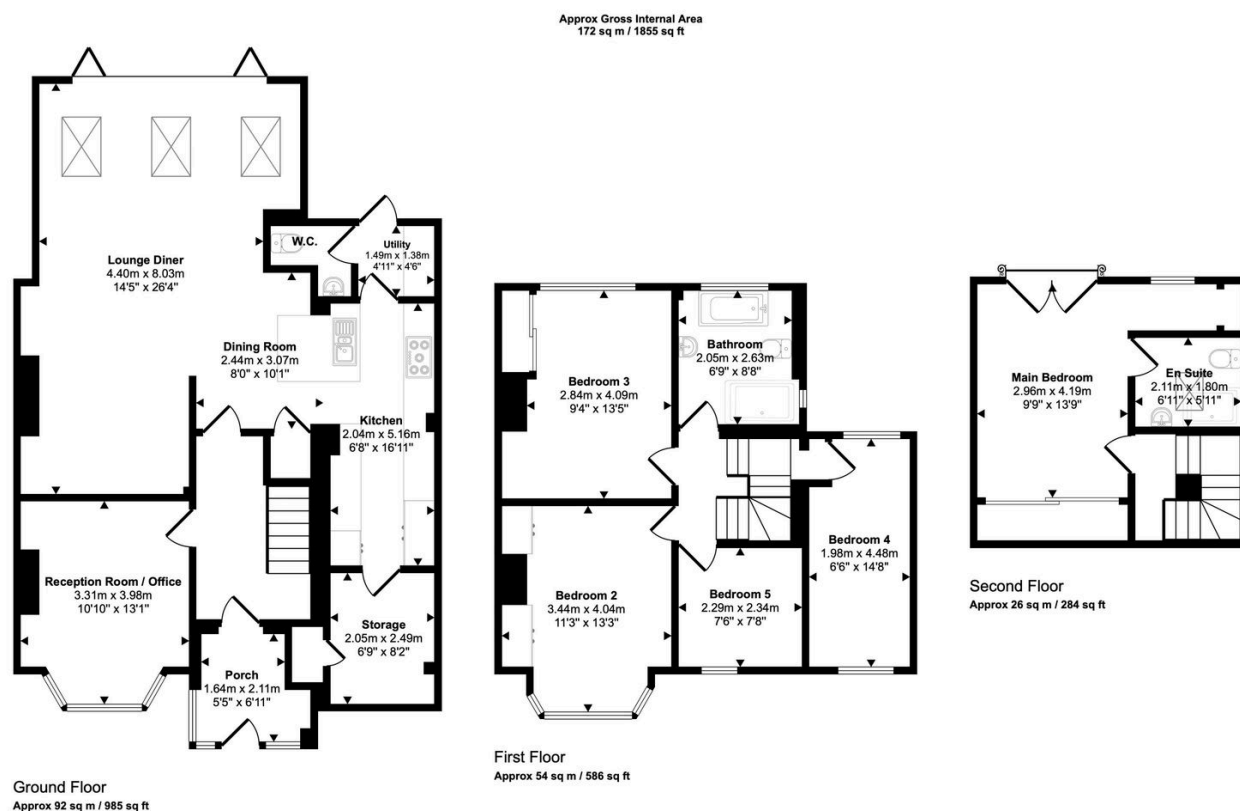
🛏 5 🚗 2 🛋 2



Immaculately Presented Five-Bedroom Detached Family Home with Modern Open-Plan Living, Two Stylish Bathrooms, Office Space, and Landscaped Garden with Decking – Set in the Highly Sought-After Greyfort Crescent, Solihull

Key Features

- Immaculately presented five-bedroom detached home
- Stunning open-plan kitchen, dining, and lounge area with bi-fold doors
- Main bedroom with private en-suite on the top floor
- Generous storage areas throughout the home
- Modern décor and fittings throughout – move-in ready condition
- Highly desirable Solihull (B92) location
- Separate reception room/office ideal for home working
- Contemporary family bathroom on the first floor
- Landscaped rear garden with decking and seating area
- Excellent transport links and school catchment area



This floorplan is only for illustrative purposes and is not to scale. Measurements of rooms, doors, windows, and any items are approximate and no responsibility is taken for any error, omission or mis-statement. Icons of items such as bathroom suites are representations only and may not look like the real items. Made with Made Snappy 360.