



Stanhope Terrace, W2

£3,500 Per week

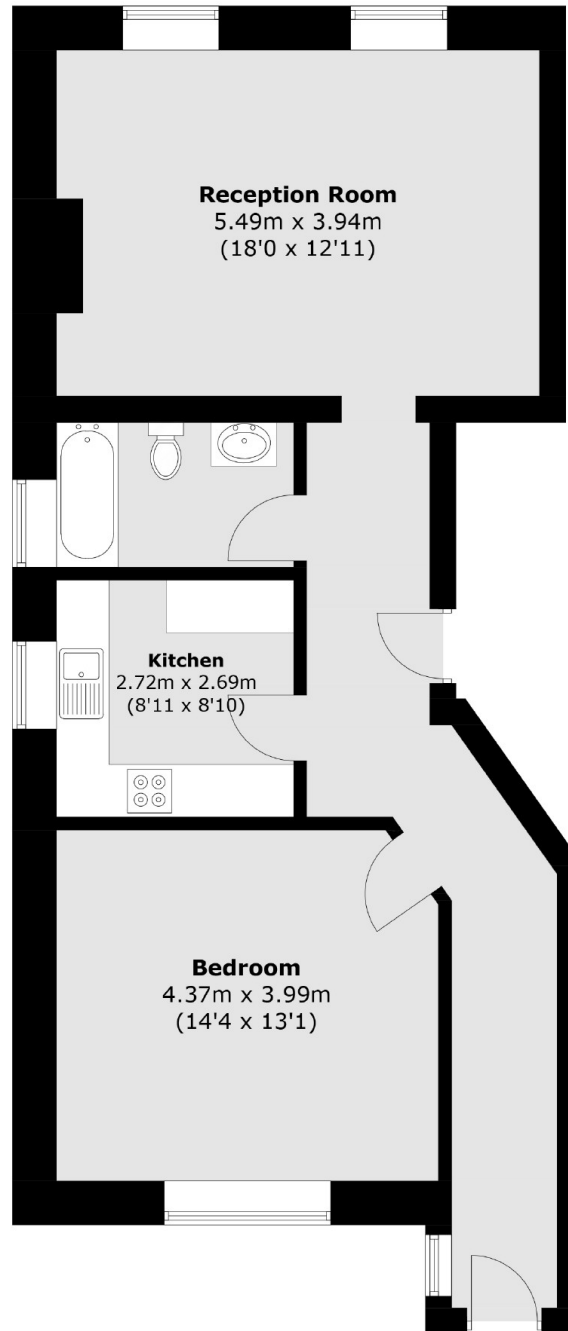
A spacious and portered one bedroom apartment with period features and two private entrances. Directly opposite Hyde Park, layout includes wood floors, a large separate kitchen, feature fireplace and a modern bathroom.

On the door step of Lancaster Gate and Hyde Park, the property is near to the shops, bars and Restaurants along Oxford Street and Notting Hill.

Features

- One Bedroom
- Spacious
- Portered
- Modern
- Wood Flooring
- Opposite Hyde Park

Stanhope Terrace, London, W2



Lower Ground Floor

Total area (approx.): 67.2 sq. m (723 sq. ft)