



22 Glen Crescent, Selsey, PO20 0QT
Guide Price **£275,000 (Freehold)**

22 Glen Crescent

Selsey, Chichester

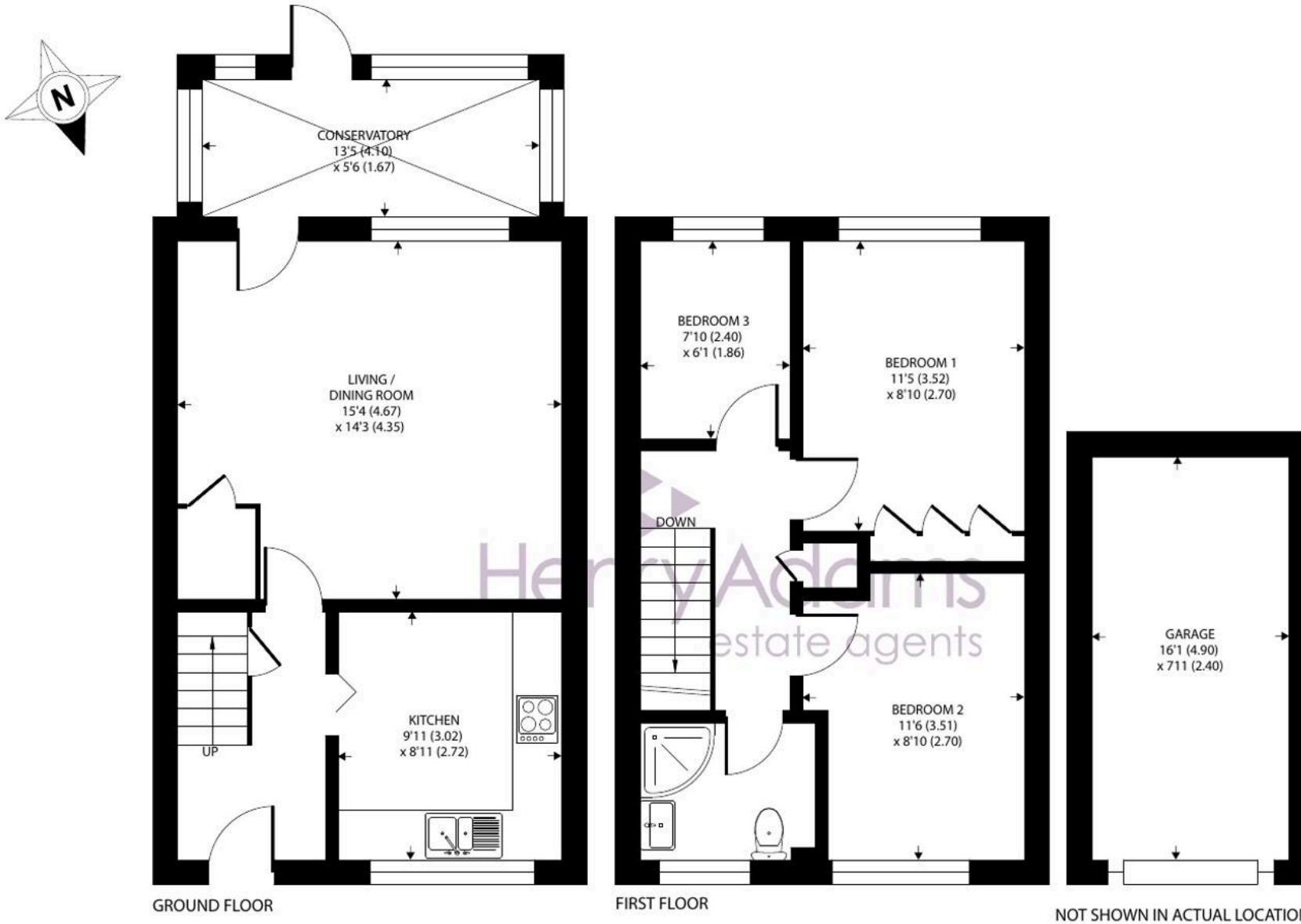
This three bedroom mid-terrace house is ideally situated in a quiet cul-de-sac, offering a peaceful residential setting with convenient access to local amenities. The spacious interior features a generously sized living and dining room, providing an ideal space for both relaxing and entertaining. An adjoining conservatory adds a bright and versatile area, perfect for use as a family room or home office. The modern kitchen is well-appointed, with ample storage and worktop space.

Upstairs, there are three bedrooms, two doubles and a single, each offering comfortable accommodation for family members or guests. The family bathroom is fitted with a shower tray, toilet and hand basin. Additional benefits include gas central heating with a new boiler which was installed in February 2026, double glazing throughout, and ample storage options. The property is offered with no forward chain, making it an ideal choice for those seeking a straightforward purchase process. A garage is located in a nearby block, providing secure parking or additional storage.

Council Tax band: C, EPC Rating: C.

- Three Bedroom Mid-Terrace House
- Quiet Cul-De-Sac Location
- No Forward Chain
- Conservatory
- Large Living/Dining Room
- Garage in a Block





Approximate Area = 843 sq ft / 78.3 sq m
 Garage = 127 sq ft / 11.7 sq m
 Total = 970 sq ft / 90 sq m

For identification only - Not to scale







Henry Adams - Selsey

Henry Adams LLP, 122 High Street, Selsey - PO20 0QE

01243 606789 • selsey@henryadams.co.uk • www.henryadams.co.uk/

Agents Note - Our particulars are for guidance only and are intended to give a fair overall summary of the property. They do not form part of any contract or offer, and should not be relied upon as a statement or representation of fact. Measurements, areas and distances are approximate only. Photographs may include lifestyle shots and pictures of local views. No undertaking is given as to the structural condition of the property, or any necessary consents or the operating ability or efficiency of any